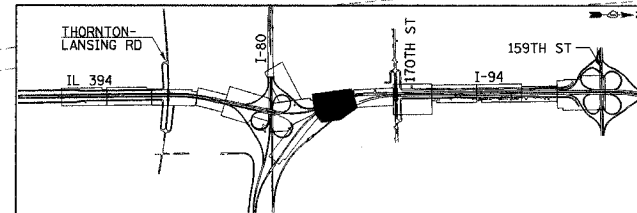
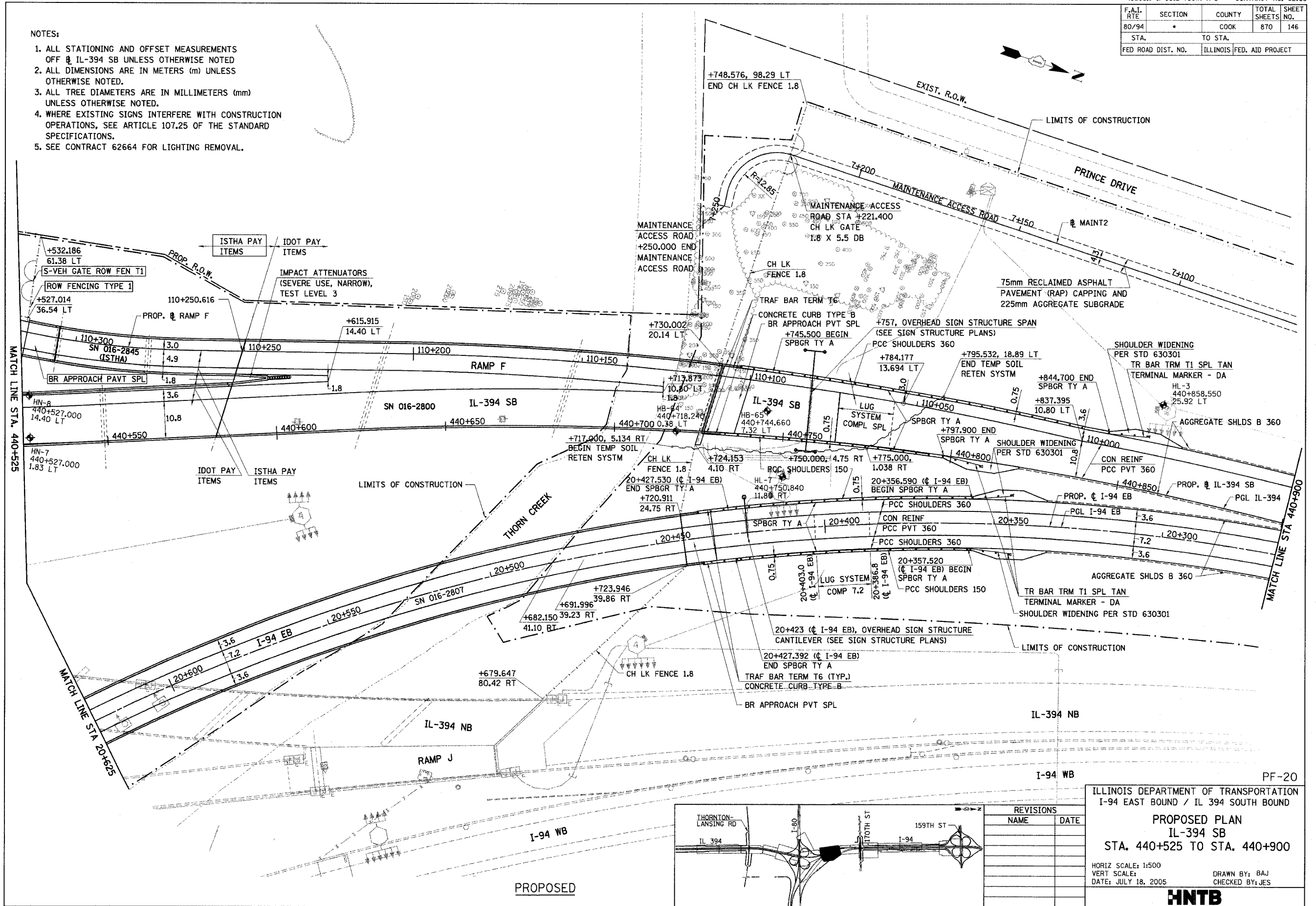


F.A.I. RTE	SECTION	COUNTY	TOTAL SHEETS	SHEET NO.
80/94	*	COOK	870	146
STA.		TO STA.		
FED ROAD DIST. NO.		ILLINOIS FED. AID PROJECT		

NOTES:

1. ALL STATIONING AND OFFSET MEASUREMENTS OFF IL-394 SB UNLESS OTHERWISE NOTED
2. ALL DIMENSIONS ARE IN METERS (m) UNLESS OTHERWISE NOTED.
3. ALL TREE DIAMETERS ARE IN MILLIMETERS (mm) UNLESS OTHERWISE NOTED.
4. WHERE EXISTING SIGNS INTERFERE WITH CONSTRUCTION OPERATIONS, SEE ARTICLE 107.25 OF THE STANDARD SPECIFICATIONS.
5. SEE CONTRACT 62664 FOR LIGHTING REMOVAL.



REVISIONS	
NAME	DATE

ILLINOIS DEPARTMENT OF TRANSPORTATION
 I-94 EAST BOUND / IL 394 SOUTH BOUND

PROPOSED PLAN
IL-394 SB
STA. 440+525 TO STA. 440+900

HORIZ SCALE: 1:500
 VERT SCALE: 1:500
 DATE: JULY 18, 2005

DRAWN BY: BAJ
 CHECKED BY: JES

HNTB