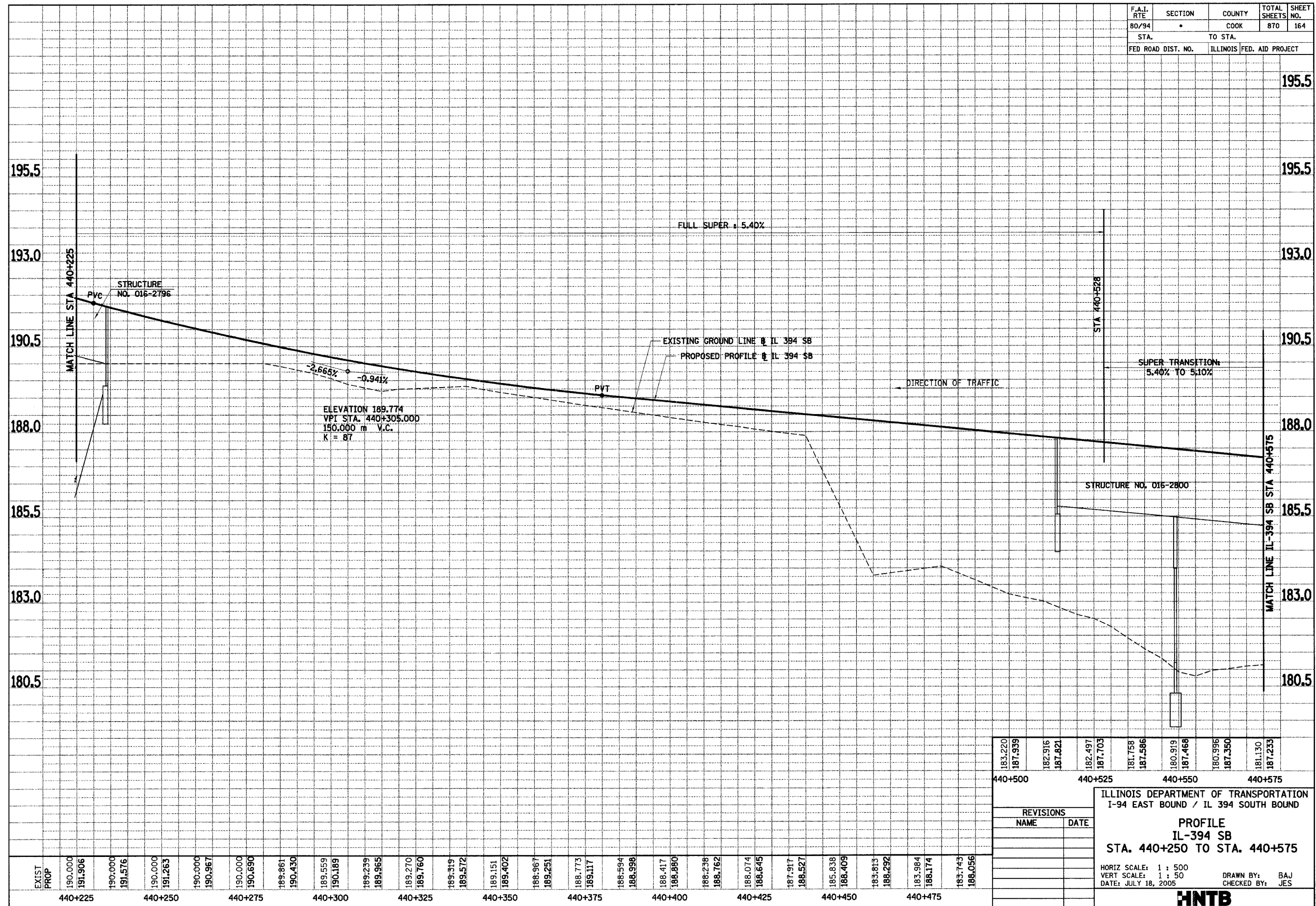


F.A.I. RTE	SECTION	COUNTY	TOTAL SHEETS	SHEET NO.
80/94	*	COOK	870	164
STA.		TO STA.		
FED ROAD DIST. NO.		ILLINOIS FED. AID PROJECT		



EXIST PROP	190.000	191.906	190.000	191.576	190.000	191.263	190.000	190.967	190.000	190.690	189.861	190.430	189.559	190.189	189.239	189.965	189.270	189.760	189.319	189.572	189.151	189.402	188.967	189.251	188.773	189.117	188.594	188.998	188.417	188.880	188.238	188.762	188.074	188.645	187.917	188.527	185.838	186.409	183.813	186.292	183.984	186.174	183.743	186.056				
	440+225	440+250	440+275	440+300	440+325	440+350	440+375	440+400	440+425	440+450	440+475																																					

183.220	187.959	182.916	187.621	182.497	187.703	181.758	187.586	180.919	187.468	180.996	187.350	181.130	187.233
440+500	440+525	440+550	440+575										
ILLINOIS DEPARTMENT OF TRANSPORTATION I-94 EAST BOUND / IL 394 SOUTH BOUND PROFILE IL-394 SB STA. 440+250 TO STA. 440+575 HORIZ SCALE: 1 : 500 VERT SCALE: 1 : 50 DATE: JULY 18, 2005 DRAWN BY: BAJ CHECKED BY: JES													
HNTB													