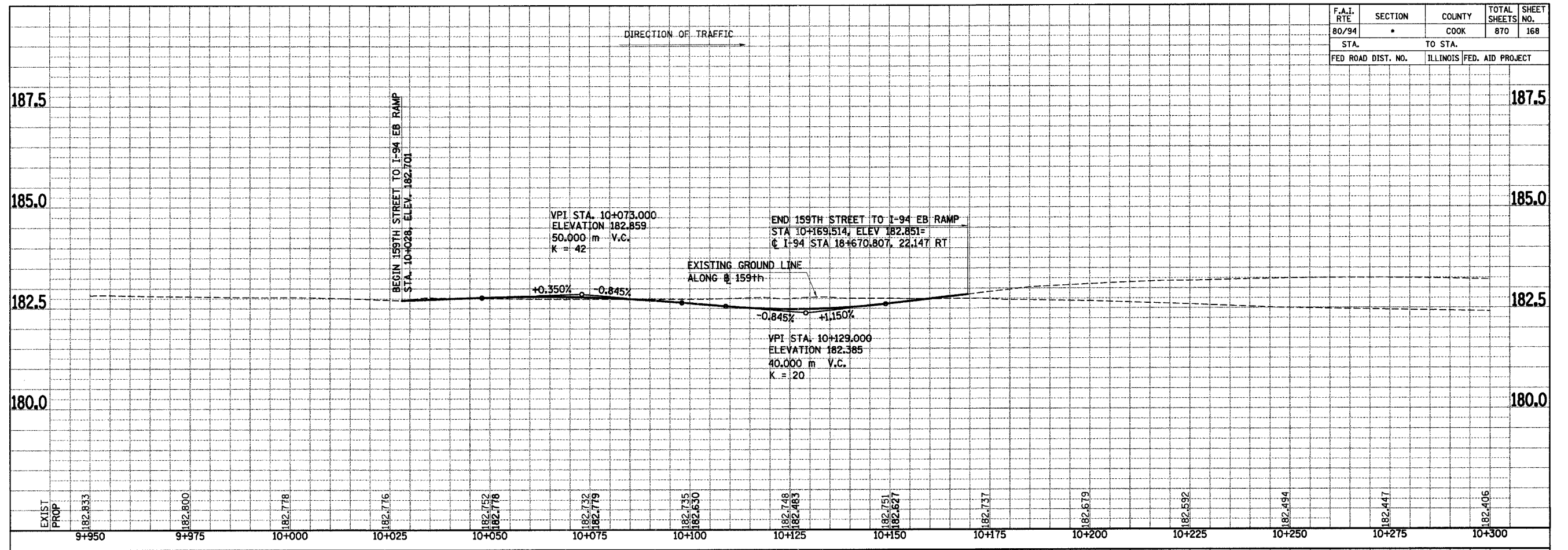


F.A.I. RTE	SECTION	COUNTY	TOTAL SHEETS	SHEET NO.
80/94	*	COOK	870	168
STA.		TO STA.		
FED ROAD DIST. NO.		ILLINOIS FED. AID PROJECT		



EXIST PROP	ELEVATION	STATION
182.833	9+950	
182.800	9+975	
182.778	10+000	
182.776	10+025	
182.752	10+050	
182.776	10+050	
182.732	10+075	
182.779	10+075	
182.735	10+100	
182.630	10+100	
182.748	10+125	
182.783	10+125	
182.751	10+150	
182.627	10+150	
182.737	10+175	
182.679	10+200	
182.592	10+225	
182.494	10+250	
182.447	10+275	
182.406	10+300	

REVISIONS	
NAME	DATE

ILLINOIS DEPARTMENT OF TRANSPORTATION
I-94 EAST BOUND / IL 394 SOUTH BOUND

PROFILE
159TH STREET TO I-94 EB RAMP
STA. 10+028 TO STA. 10+169.514

HORIZ SCALE: 1 : 500
VERT SCALE: 1 : 50
DATE: JULY 18, 2005

DRAWN BY: BAJ
CHECKED BY: JES

HNTB