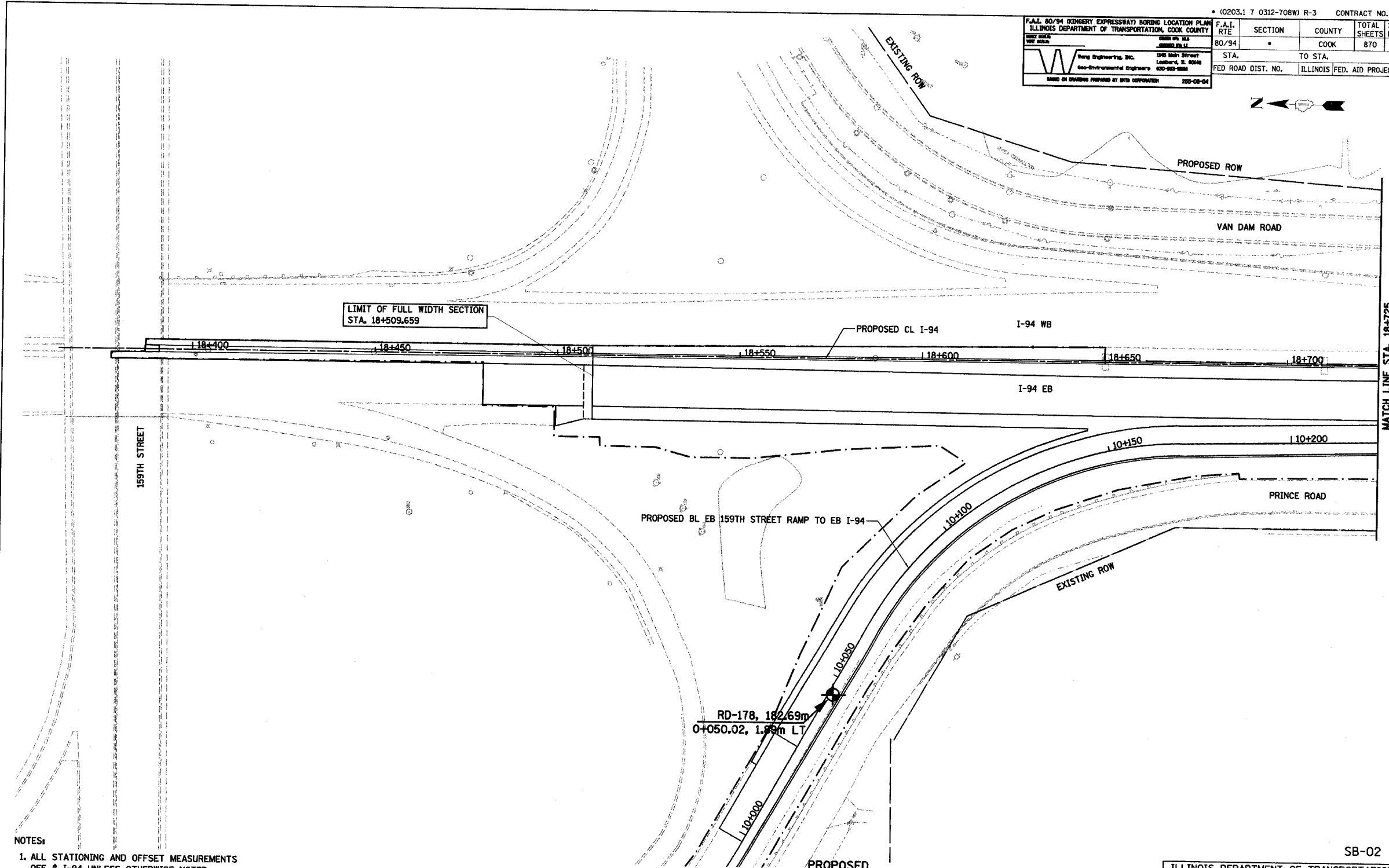
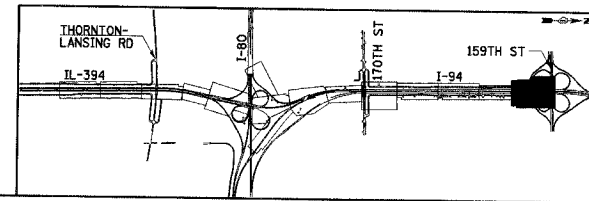


F.A.I. 80/94 OGDERY EXPRESSWAY BORING LOCATION PLAN ILLINOIS DEPARTMENT OF TRANSPORTATION, COOK COUNTY		F.A.I. RTE	SECTION	COUNTY	TOTAL SHEETS	SHEET NO.
80/94		*		COOK	870	174
Sta. 18+363 TO STA. 18+725		FED ROAD DIST. NO.		ILLINOIS FED. AID PROJECT		
King Engineering, Inc. Geo-Environmental Engineers 3745 Main Street Lombard, IL 60148 630-963-8888		DRAWN BY: [Signature] DATE: 220-08-04				



- NOTES:
1. ALL STATIONING AND OFFSET MEASUREMENTS OFF  $\phi$  I-94 UNLESS OTHERWISE NOTED
  2. ALL DIMENSIONS ARE IN METERS (m) UNLESS OTHERWISE NOTED.



REVISIONS	
NAME	DATE

SB-02  
 ILLINOIS DEPARTMENT OF TRANSPORTATION  
 I-94 EAST BOUND / IL 394 SOUTH BOUND  
**SOIL BORING PLAN**  
**I-94**  
**STA. 18+363 TO STA. 18+725**  
 HORIZ SCALE: 1:500  
 VERT SCALE:  
 DATE: JULY 18, 2005  
 DRAWN BY:  
 CHECKED BY: