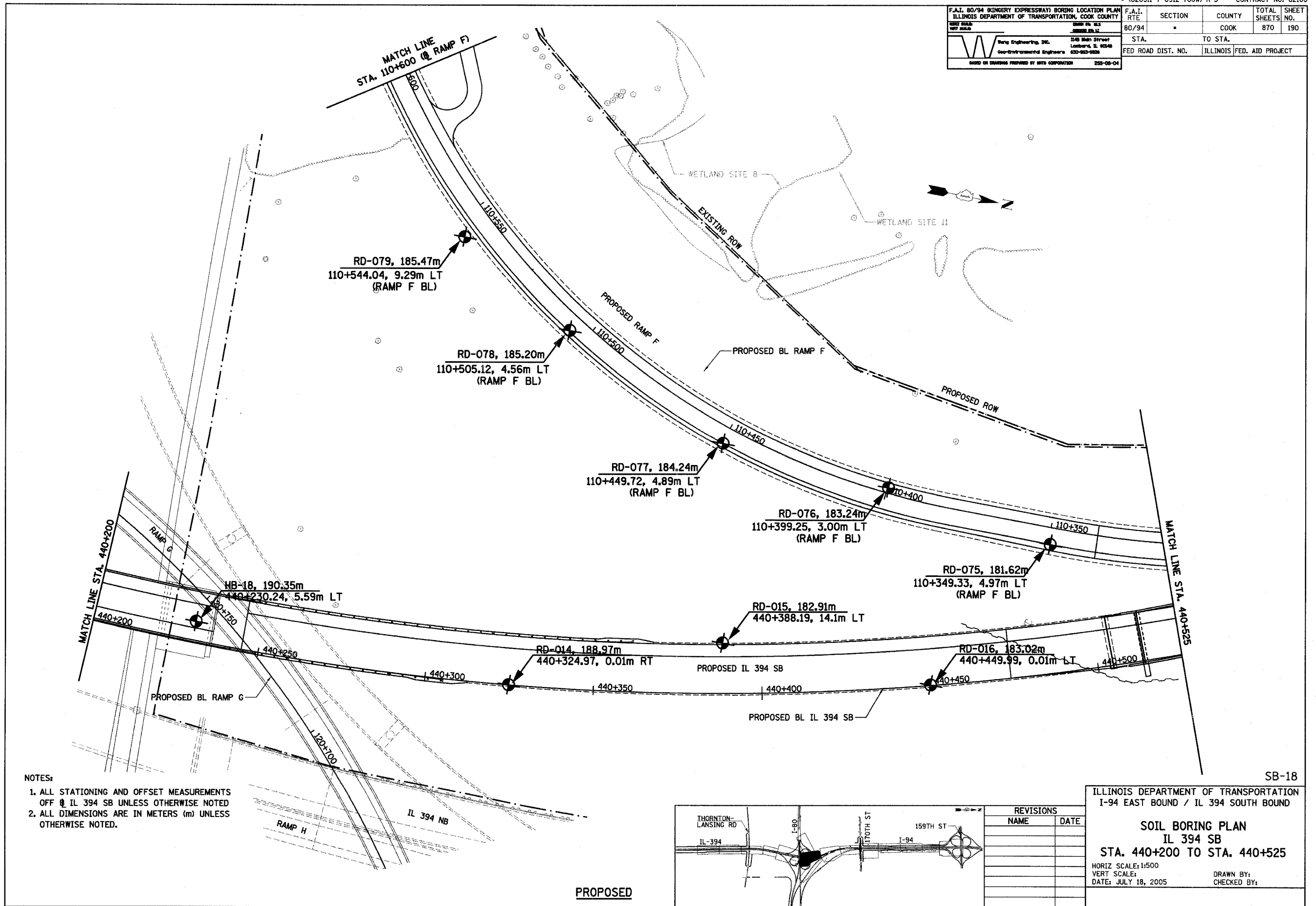
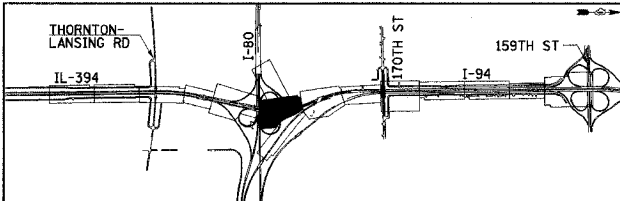


F.A.I. 80/94 (KINDERY EXPRESSWAY) BORING LOCATION PLAN ILLINOIS DEPARTMENT OF TRANSPORTATION, COOK COUNTY		F.A.I. RTE	SECTION	COUNTY	TOTAL SHEETS	SHEET NO.
DATE SCALE	DATE SCALE	80/94	*	COOK	870	190
Wang Engineering, Inc. 240 Main Street Lombard, IL 60148 Geo-Environmental Engineers 630-953-8828		STA.	TO STA.			
BASED ON DRAWINGS PREPARED BY NHTA CORPORATION 255-05-04		FED ROAD DIST. NO.	ILLINOIS FED. AID PROJECT			



NOTES:

1. ALL STATIONING AND OFFSET MEASUREMENTS OFF @ IL 394 SB UNLESS OTHERWISE NOTED
2. ALL DIMENSIONS ARE IN METERS (m) UNLESS OTHERWISE NOTED.



REVISIONS	
NAME	DATE

ILLINOIS DEPARTMENT OF TRANSPORTATION
I-94 EAST BOUND / IL 394 SOUTH BOUND

SOIL BORING PLAN
IL 394 SB
STA. 440+200 TO STA. 440+525

HORIZ SCALE: 1:500
VERT SCALE: 1:500
DATE: JULY 18, 2005

DRAWN BY:
CHECKED BY:

PROPOSED

SB-18