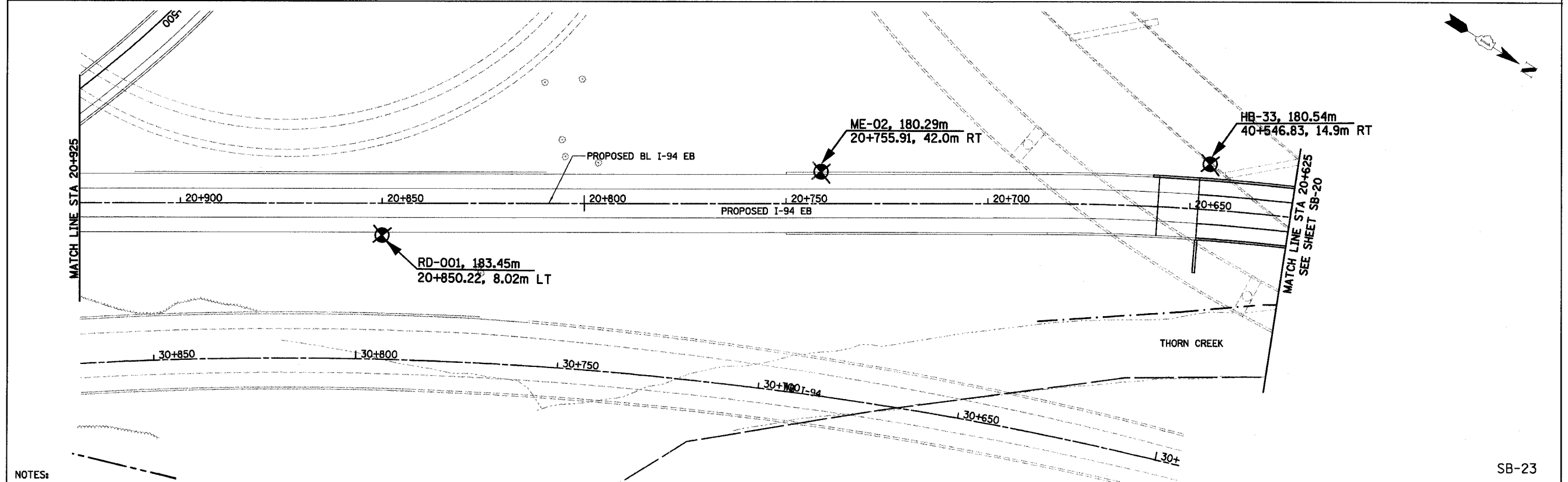
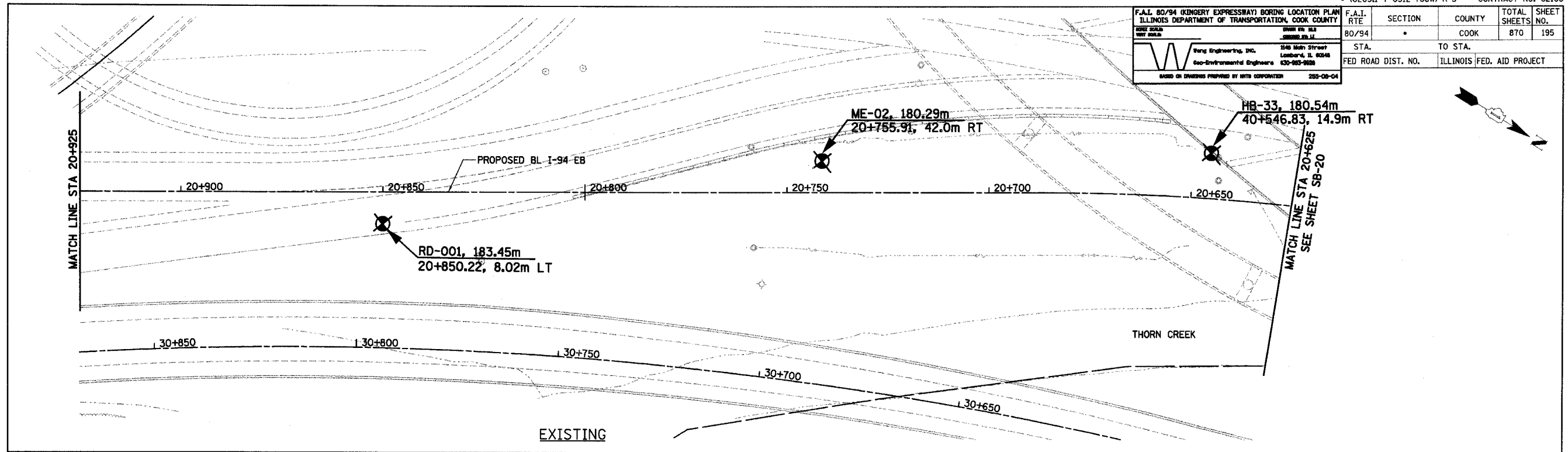
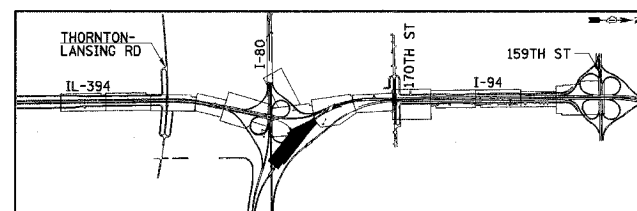


F.A.I. 80/94 (KINGERY EXPRESSWAY) BORING LOCATION PLAN ILLINOIS DEPARTMENT OF TRANSPORTATION, COOK COUNTY		F.A.I. RTE	SECTION	COUNTY	TOTAL SHEETS	SHEET NO.
SHEET SCALE 1"=100'		80/94	.	COOK	870	195
Sung Engineering, Inc. 548 Main Street Lombard, IL 60148 Geo-Environmental Engineers 630-953-9888		STA.	TO STA.			
DRAWN OR CHECKED PREPARED BY: MTH CORPORATION 255-08-04		FED ROAD DIST. NO.	ILLINOIS FED. AID PROJECT			



- NOTES:
1. ALL STATIONING AND OFFSET MEASUREMENTS OFF @ IL-394 SB UNLESS OTHERWISE NOTED
 2. ALL DIMENSIONS ARE IN METERS (m) UNLESS OTHERWISE NOTED.



REVISIONS	
NAME	DATE

ILLINOIS DEPARTMENT OF TRANSPORTATION
I-94 EAST BOUND / IL 394 SOUTH BOUND

SOIL BORING PLAN
I-94 EB
STA. 20+625 TO STA. 20+925

HORIZ SCALE: 1:500
VERT SCALE: 1"=10'
DATE: JULY 18, 2005

DRAWN BY: _____
CHECKED BY: _____

SB-23