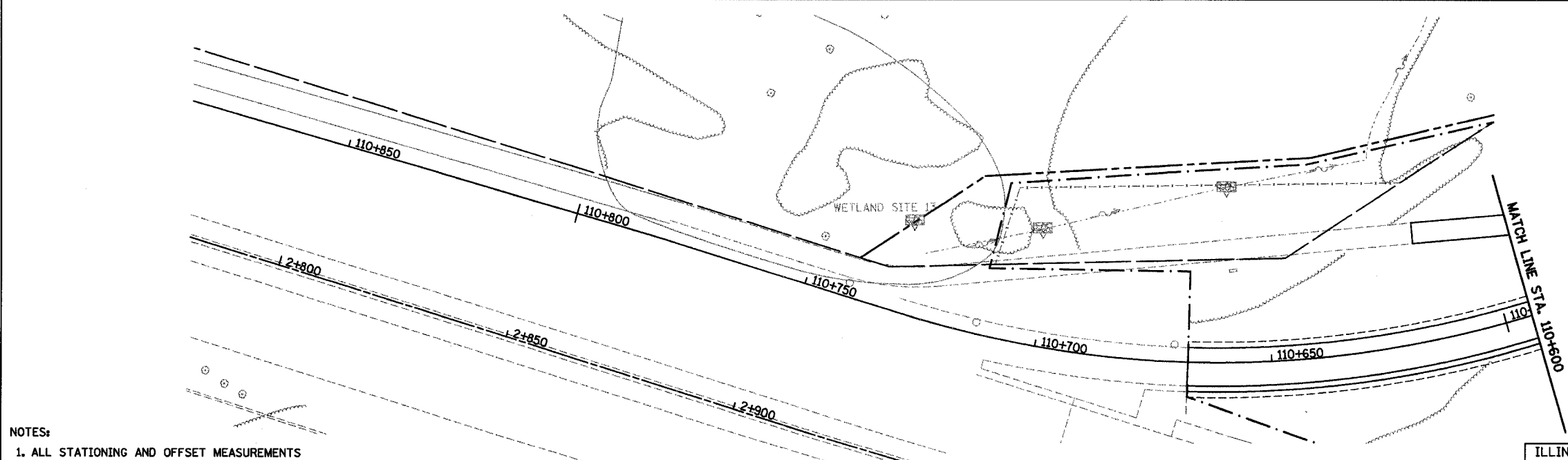
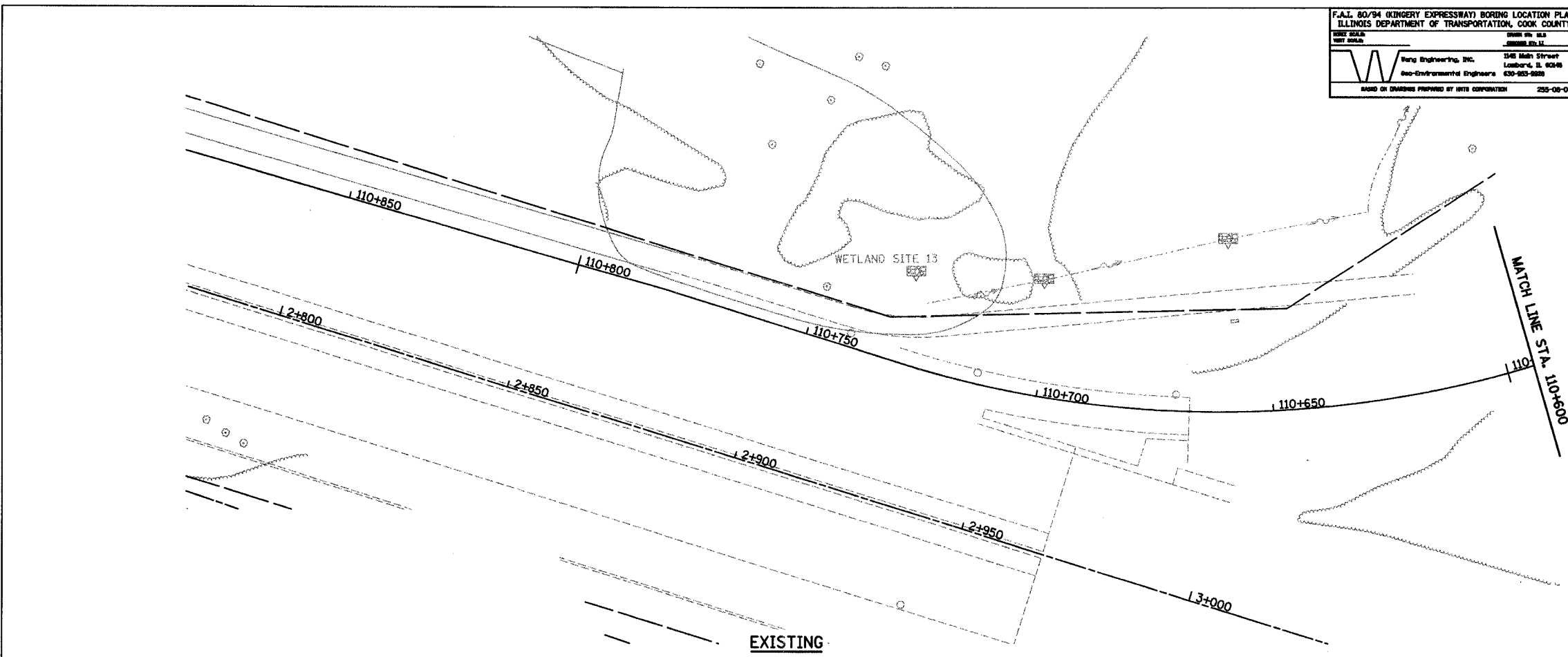
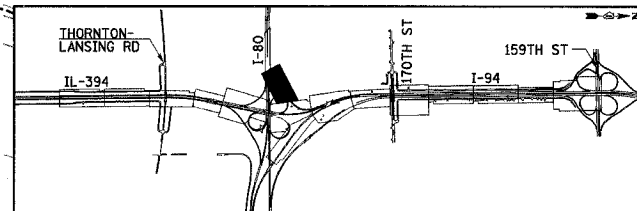


F.A.I. 80/94 (KINGERY EXPRESSWAY) BORING LOCATION PLAN		F.A.I. RTE.	SECTION	COUNTY	TOTAL SHEETS	SHEET NO.
ILLINOIS DEPARTMENT OF TRANSPORTATION, COOK COUNTY		80/94	*	COOK	870	197
DRAWN BY: J.L. WANG DATE: 07/18/05		STA.		TO STA.		
Wang Engineering, Inc. 1548 Main Street Lombard, IL 60148 Geo-Environmental Engineers 630-953-8888		FED ROAD DIST. NO.		ILLINOIS FED. AID PROJECT		
BOARD OF CHAIRMAN PREPARED BY: ITRC CORPORATION		255-08-04				



- NOTES:**
1. ALL STATIONING AND OFFSET MEASUREMENTS OFF RAMP F UNLESS OTHERWISE NOTED
  2. ALL DIMENSIONS ARE IN METERS (m) UNLESS OTHERWISE NOTED.
  3. ALL TREE DIAMETERS ARE IN MILLIMETERS (mm) UNLESS OTHERWISE NOTED.
  4. WHERE EXISTING SIGNS INTERFERE WITH CONSTRUCTION OPERATIONS, SEE ARTICLE 107.25 OF THE STANDARD SPECIFICATIONS.
  5. SEE CONTRACT 62664 FOR LIGHTING REMOVAL.

**PROPOSED**



REVISIONS	
NAME	DATE

ILLINOIS DEPARTMENT OF TRANSPORTATION  
I-94 EAST BOUND / IL 394 SOUTH BOUND

**PROPOSED PLAN**  
**RAMP F**  
**STA. 110+600 TO STA. 110+750**

HORIZ SCALE: 1:500  
VERT SCALE:    
DATE: JULY 18, 2005

DRAWN BY: BAJ  
CHECKED BY: JES

SB-25