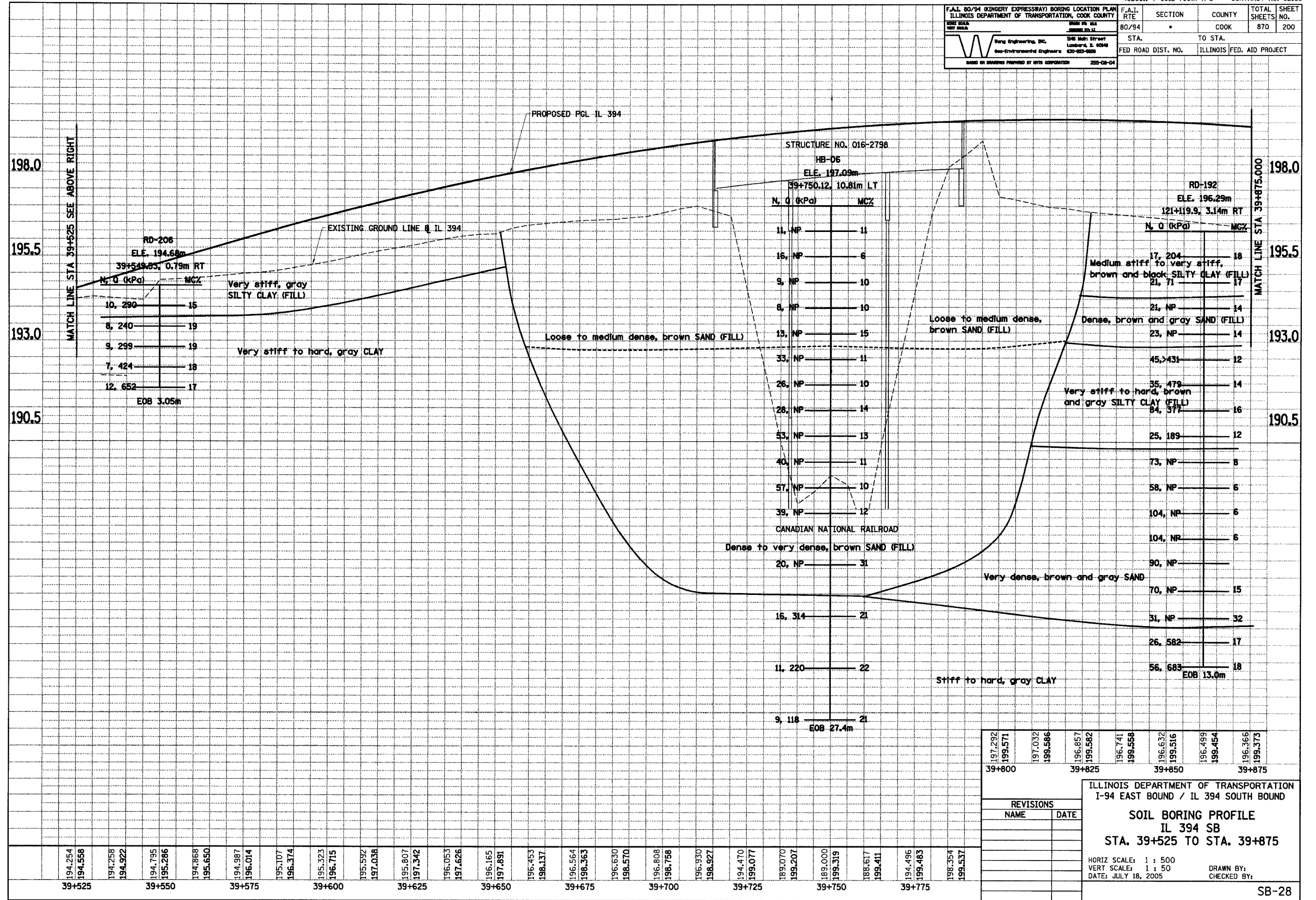


F.A.I. 80/94 (KINGERY EXPRESSWAY) BORING LOCATION PLAN ILLINOIS DEPARTMENT OF TRANSPORTATION, COOK COUNTY		F.A.I. RTE	SECTION	COUNTY	TOTAL SHEETS NO.
80/94				COOK	870
FED ROAD DIST. NO.		TO STA.		ILLINOIS FED. AID PROJECT	
259-08-04					



197.292	197.032	196.857	196.632	196.499	196.366
199.571	199.586	199.582	199.516	199.454	199.373
39+800	39+825	39+850	39+875		

REVISIONS	
NAME	DATE

ILLINOIS DEPARTMENT OF TRANSPORTATION  
I-94 EAST BOUND / IL 394 SOUTH BOUND

**SOIL BORING PROFILE**  
**IL 394 SB**  
**STA. 39+525 TO STA. 39+875**

HORIZ SCALE: 1 : 500  
VERT SCALE: 1 : 50  
DATE: JULY 18, 2005

DRAWN BY:  
CHECKED BY: