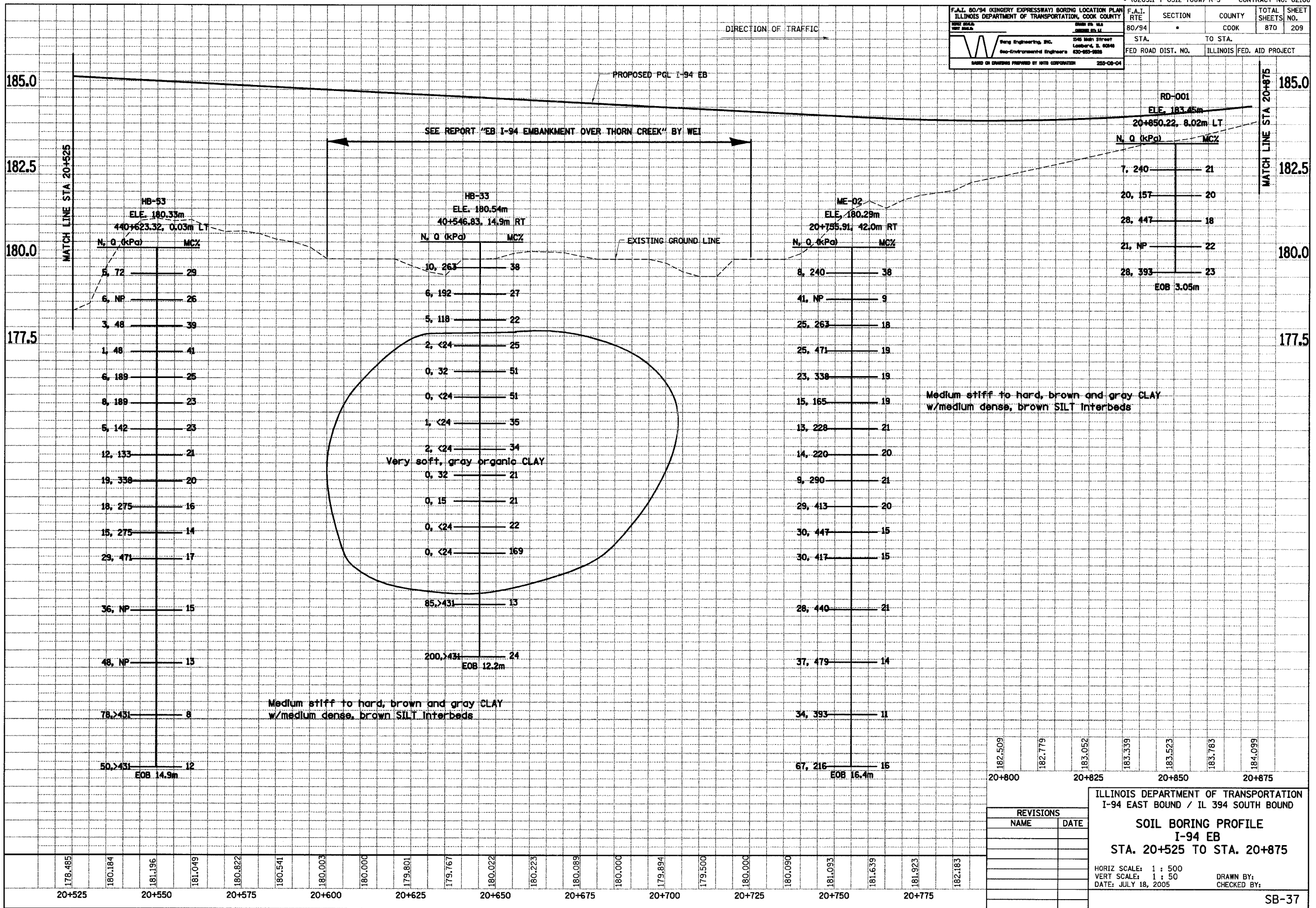


F.A.I. 80/94 (KINGERY EXPRESSWAY) BORING LOCATION PLAN ILLINOIS DEPARTMENT OF TRANSPORTATION, COOK COUNTY		F.A.I. RTE	SECTION	COUNTY	TOTAL SHEETS NO.
80/94				COOK	870
STA. TO STA.		ILLINOIS		FED. AID PROJECT	
FED. ROAD DIST. NO.		ILLINOIS		FED. AID PROJECT	



178.485	180.184	181.196	181.049	180.822	180.541	180.003	180.000	179.801	179.767	180.022	180.223	180.089	180.000	179.894	179.500	180.000	180.090	181.093	181.639	181.923	182.183	
20+525	20+550	20+575	20+600	20+625	20+650	20+675	20+700	20+725	20+750	20+775												

182.509	182.779	183.052	183.339	183.523	183.763	184.099
20+800	20+825	20+850	20+875			

REVISIONS	
NAME	DATE

ILLINOIS DEPARTMENT OF TRANSPORTATION
I-94 EAST BOUND / IL 394 SOUTH BOUND

SOIL BORING PROFILE
I-94 EB
STA. 20+525 TO STA. 20+875

HORIZ SCALE: 1 : 500
VERT SCALE: 1 : 50
DATE: JULY 18, 2005

DRAWN BY:
CHECKED BY:

SB-37