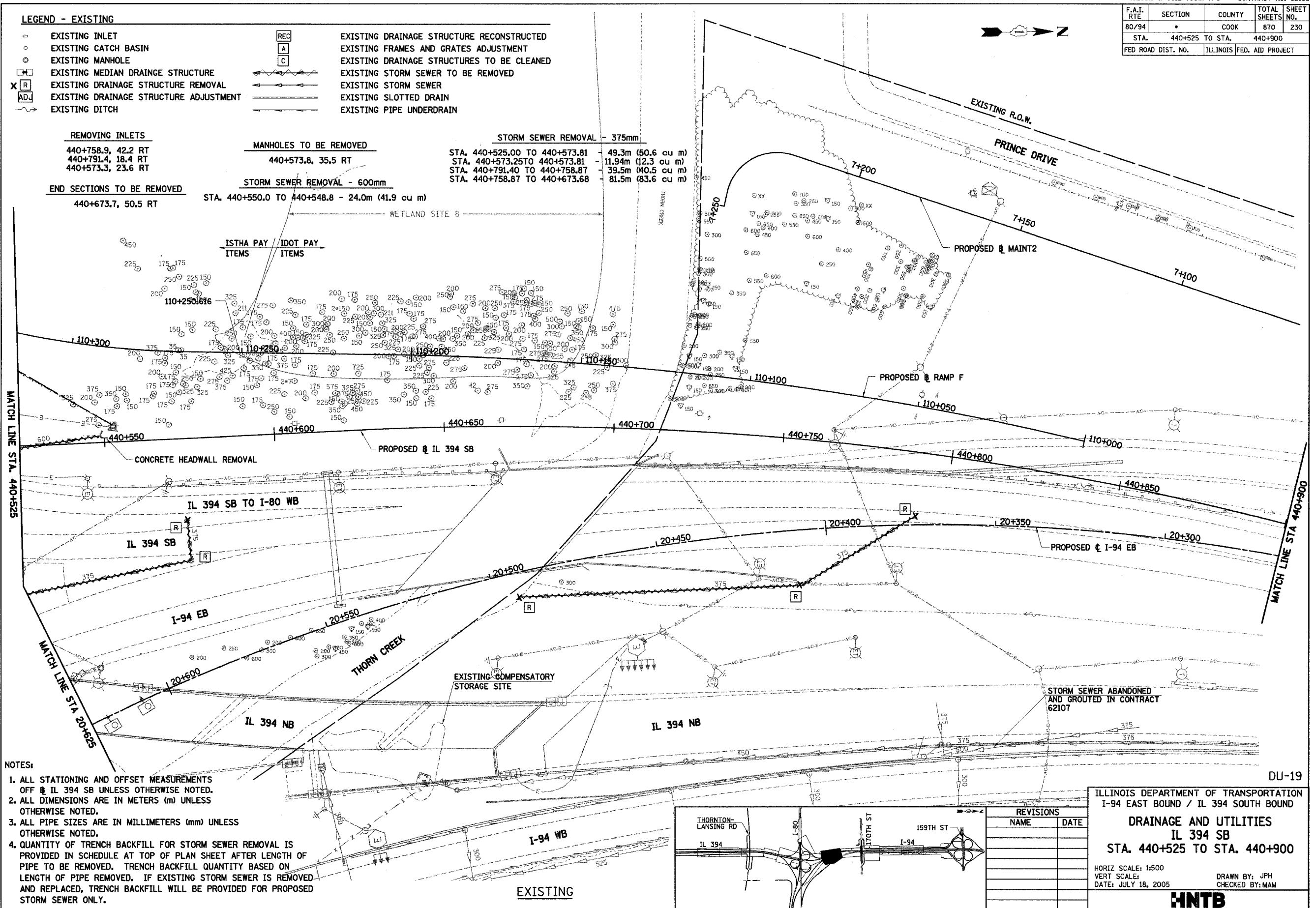


F.A.I. RTE	SECTION	COUNTY	TOTAL SHEETS NO.	SHEET NO.
80/94	*	COOK	870	230
STA. 440+525 TO STA. 440+900				
FED ROAD DIST. NO.		ILLINOIS	FED. AID PROJECT	

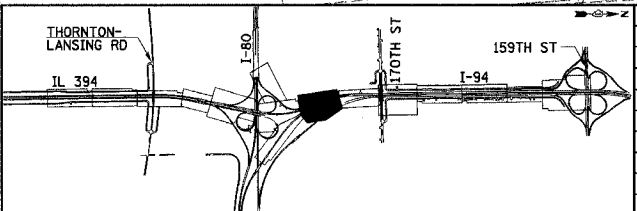
LEGEND - EXISTING

- EXISTING INLET
- EXISTING CATCH BASIN
- EXISTING MANHOLE
- EXISTING MEDIAN DRAINAGE STRUCTURE
- X [R] EXISTING DRAINAGE STRUCTURE REMOVAL
- [AD] EXISTING DRAINAGE STRUCTURE ADJUSTMENT
- ~ EXISTING DITCH
- REC EXISTING DRAINAGE STRUCTURE RECONSTRUCTED
- A EXISTING FRAMES AND GRATES ADJUSTMENT
- C EXISTING DRAINAGE STRUCTURES TO BE CLEANED
- ~ EXISTING STORM SEWER TO BE REMOVED
- ~ EXISTING STORM SEWER
- ~ EXISTING SLOTTED DRAIN
- ~ EXISTING PIPE UNDERDRAIN

- REMOVING INLETS**
 440+758.9, 42.2 RT
 440+791.4, 18.4 RT
 440+573.3, 23.6 RT
- MANHOLES TO BE REMOVED**
 440+573.8, 35.5 RT
- STORM SEWER REMOVAL - 600mm**
 STA. 440+550.0 TO 440+548.8 - 24.0m (41.9 cu m)
- STORM SEWER REMOVAL - 375mm**
 STA. 440+525.00 TO 440+573.81 - 49.3m (50.6 cu m)
 STA. 440+573.25 TO 440+573.81 - 11.94m (12.3 cu m)
 STA. 440+791.40 TO 440+758.87 - 39.5m (40.5 cu m)
 STA. 440+758.87 TO 440+673.68 - 81.5m (83.6 cu m)
- END SECTIONS TO BE REMOVED**
 440+673.7, 50.5 RT



- NOTES:**
1. ALL STATIONING AND OFFSET MEASUREMENTS OFF IL 394 SB UNLESS OTHERWISE NOTED.
 2. ALL DIMENSIONS ARE IN METERS (m) UNLESS OTHERWISE NOTED.
 3. ALL PIPE SIZES ARE IN MILLIMETERS (mm) UNLESS OTHERWISE NOTED.
 4. QUANTITY OF TRENCH BACKFILL FOR STORM SEWER REMOVAL IS PROVIDED IN SCHEDULE AT TOP OF PLAN SHEET AFTER LENGTH OF PIPE TO BE REMOVED. TRENCH BACKFILL QUANTITY BASED ON LENGTH OF PIPE REMOVED. IF EXISTING STORM SEWER IS REMOVED AND REPLACED, TRENCH BACKFILL WILL BE PROVIDED FOR PROPOSED STORM SEWER ONLY.



REVISIONS	
NAME	DATE

DU-19
 ILLINOIS DEPARTMENT OF TRANSPORTATION
 I-94 EAST BOUND / IL 394 SOUTH BOUND
DRAINAGE AND UTILITIES
 IL 394 SB
 STA. 440+525 TO STA. 440+900

HORIZ SCALE: 1:500
 VERT SCALE:
 DATE: JULY 18, 2005

DRAWN BY: JPH
 CHECKED BY: MAM

HNTB