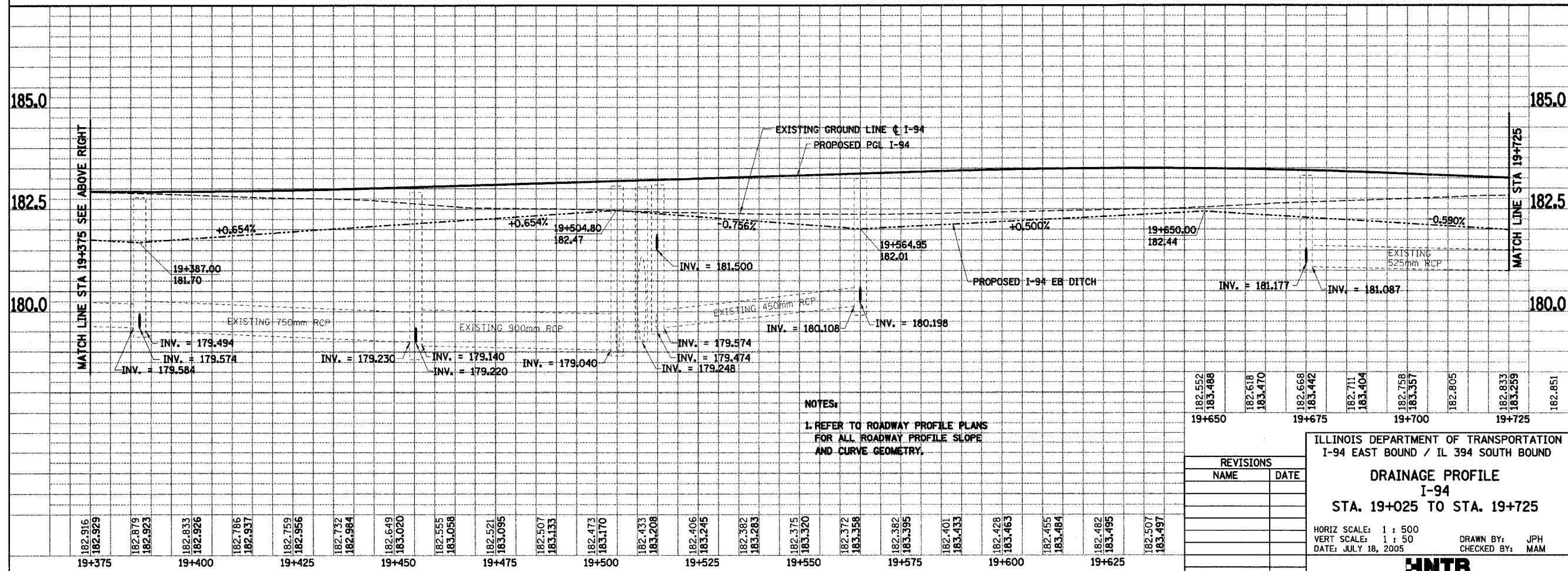
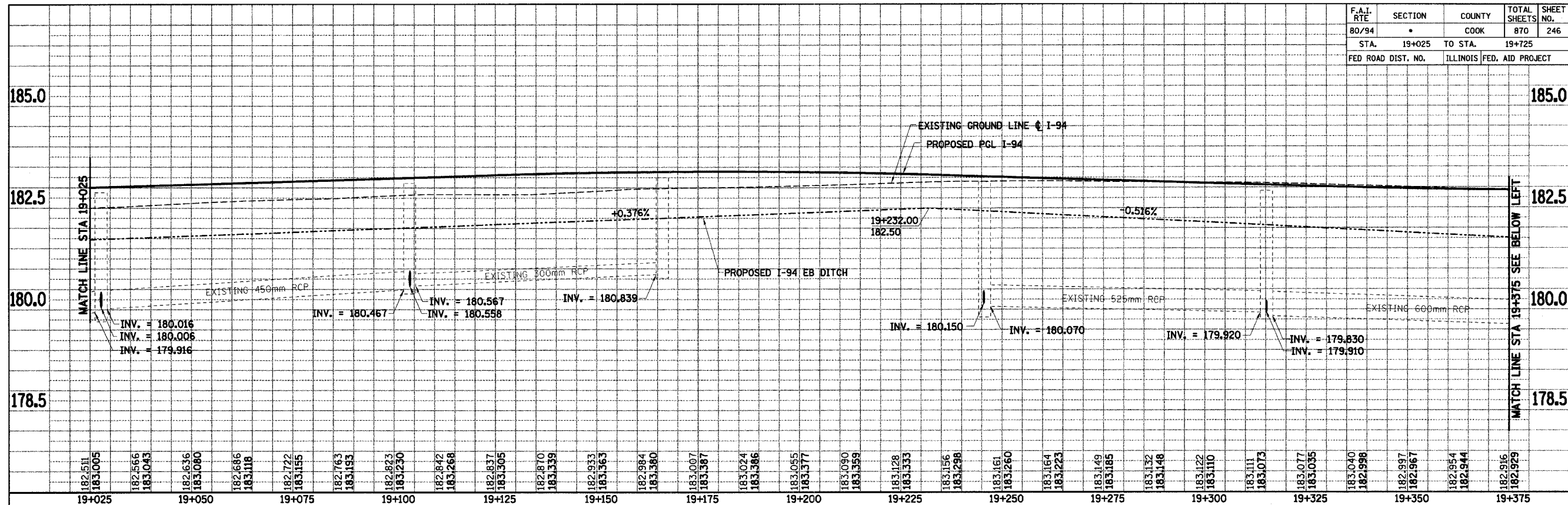


F.A.I. RTE	SECTION	COUNTY	TOTAL SHEETS NO.	SHEET NO.
80/94	*	COOK	870	246
STA.	19+025	TO STA.	19+725	
FED ROAD DIST. NO.	ILLINOIS FED. AID PROJECT			



NOTES:
1. REFER TO ROADWAY PROFILE PLANS FOR ALL ROADWAY PROFILE SLOPE AND CURVE GEOMETRY.

182.552	19+650
183.486	
182.618	19+675
183.470	
182.668	19+700
183.442	
182.711	19+725
183.404	
182.758	
183.357	
182.805	
182.833	
183.299	
182.851	

REVISIONS	
NAME	DATE

ILLINOIS DEPARTMENT OF TRANSPORTATION
I-94 EAST BOUND / IL 394 SOUTH BOUND

DRAINAGE PROFILE
I-94
STA. 19+025 TO STA. 19+725

HORIZ SCALE: 1 : 500
VERT SCALE: 1 : 50
DATE: JULY 18, 2005

DRAWN BY: JPH
CHECKED BY: MAM

HNTB