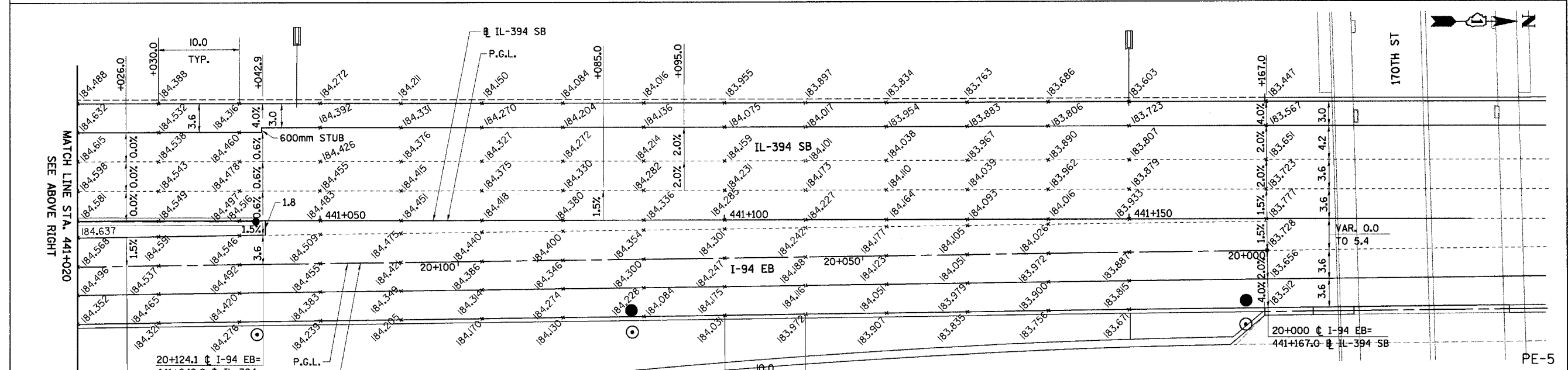
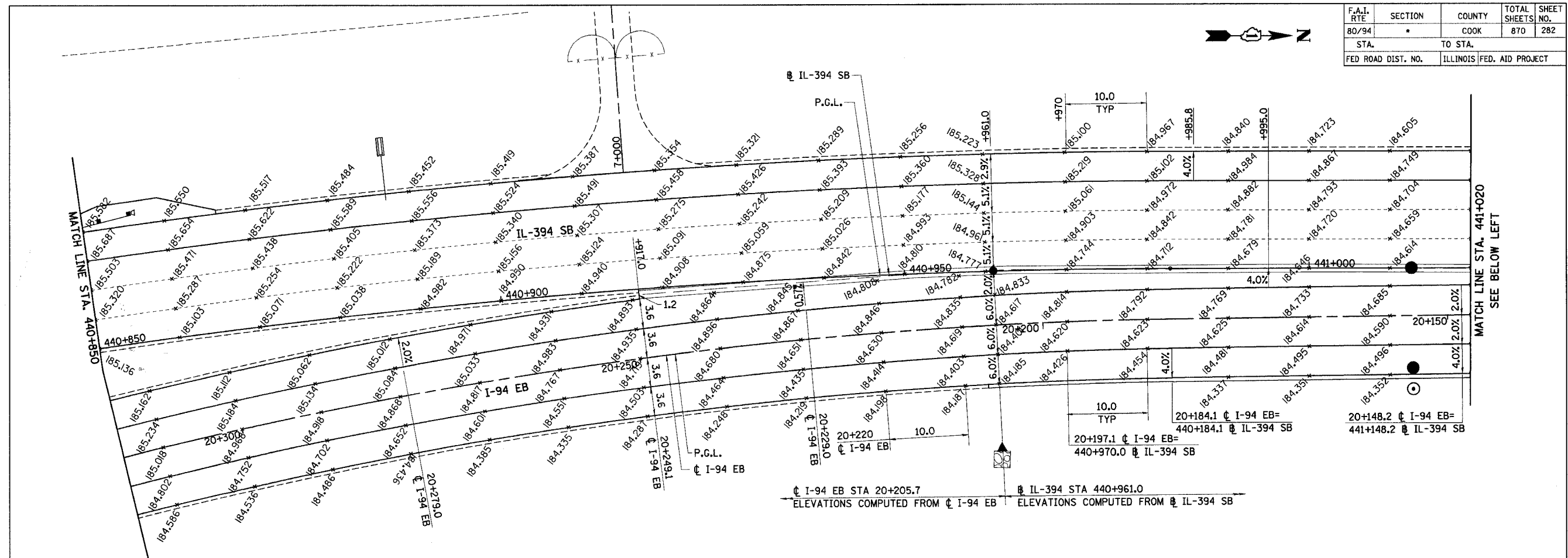
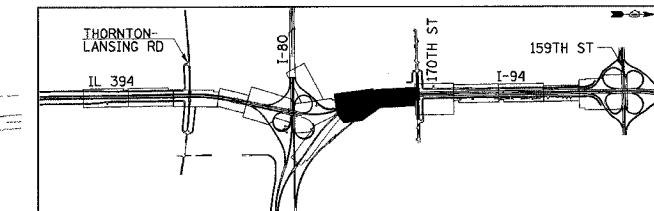


F.A.I. RTE	SECTION	COUNTY	TOTAL SHEETS	SHEET NO.
80/94	*	COOK	870	282
STA.	TO STA.			
FED ROAD DIST. NO.	ILLINOIS FED. AID PROJECT			



- NOTES:
1. ALL DIMENSIONS ARE IN METERS (m) UNLESS OTHERWISE NOTED.
 2. ALL STATIONING OFF IL 394 SB UNLESS OTHERWISE NOTED.



REVISIONS	
NAME	DATE

ILLINOIS DEPARTMENT OF TRANSPORTATION
I-94 EAST BOUND / IL 394 SOUTH BOUND

PAVEMENT ELEVATIONS I-94 EB / IL 394 SB

HORIZ SCALE: 1:250
VERT SCALE: 1" = 5.4'
DATE: JULY 18, 2005

DRAWN BY: BJM/MAC
CHECKED BY: JES

HNTB