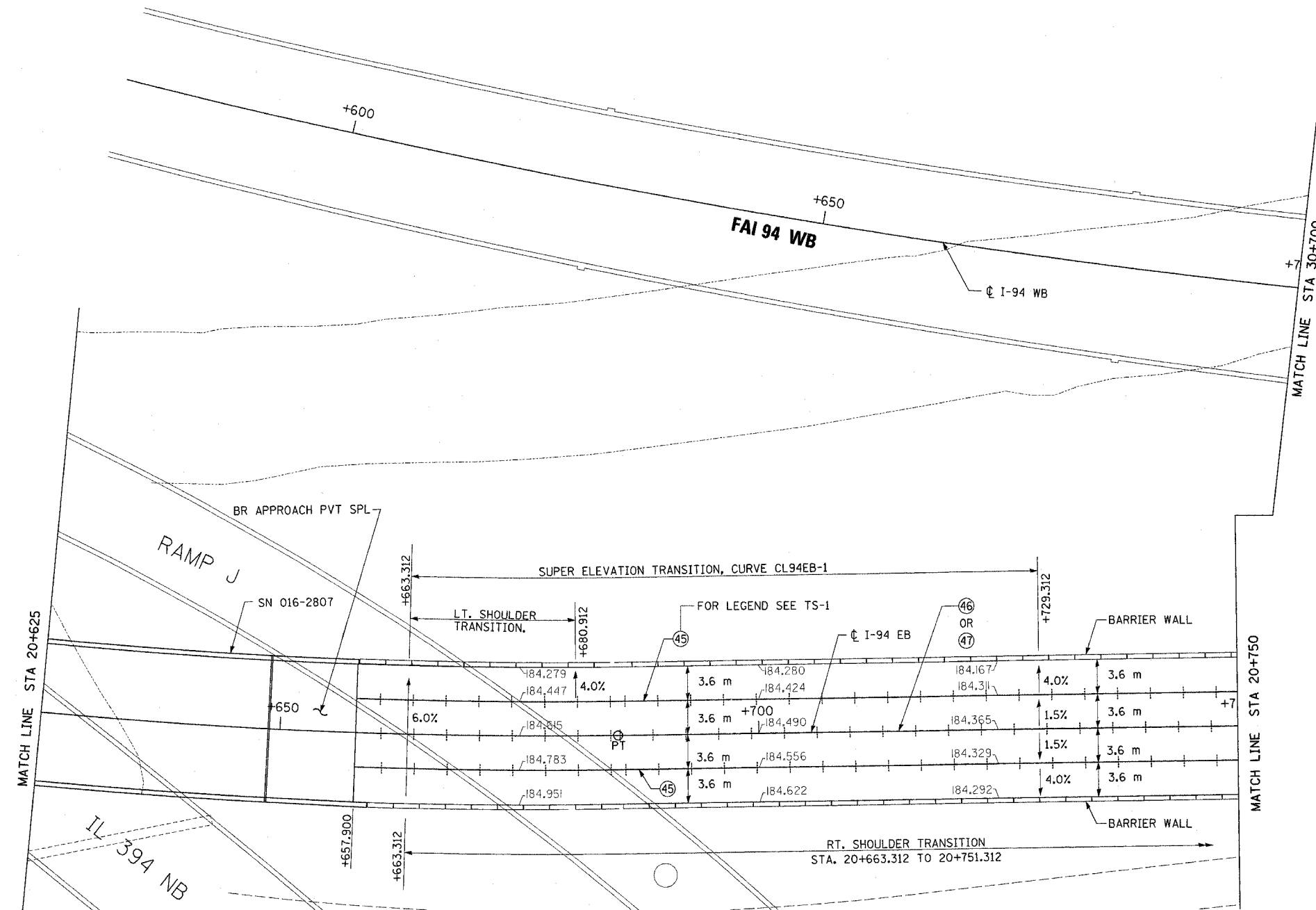
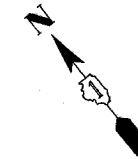


* (0203.1 & 0312-708W) R-3		CONTRACT #62108	
F.A.I. RTE.	SECTION	COUNTY	TOTAL SHEETS
80/394	*	COOK	870
STA. 30+600.00		TO STA. 30+850.00	
FED. ROAD DIST. NO. 1		ILLINOIS FED. AID PROJECT	

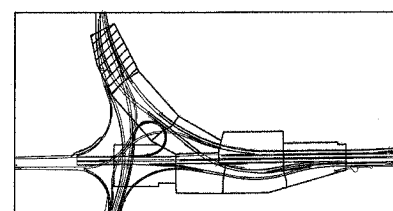
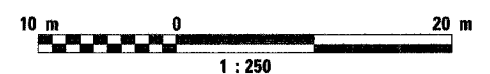


MATCH LINE STA 20+625

MATCH LINE STA 30+700

MATCH LINE STA 20+750

PE-7



REVISIONS	
NAME	DATE

ILLINOIS DEPARTMENT OF TRANSPORTATION
I-94 EASTBOUND / IL 394 SOUTHBOUND

PAVEMENT ELEVATION AND DETAILS

SCALE: 1:250
DATE: JULY 18, 2005

DRAWN BY: CTT
CHECKED BY: RCH

McDonough Associates Inc.
Engineers / Architects