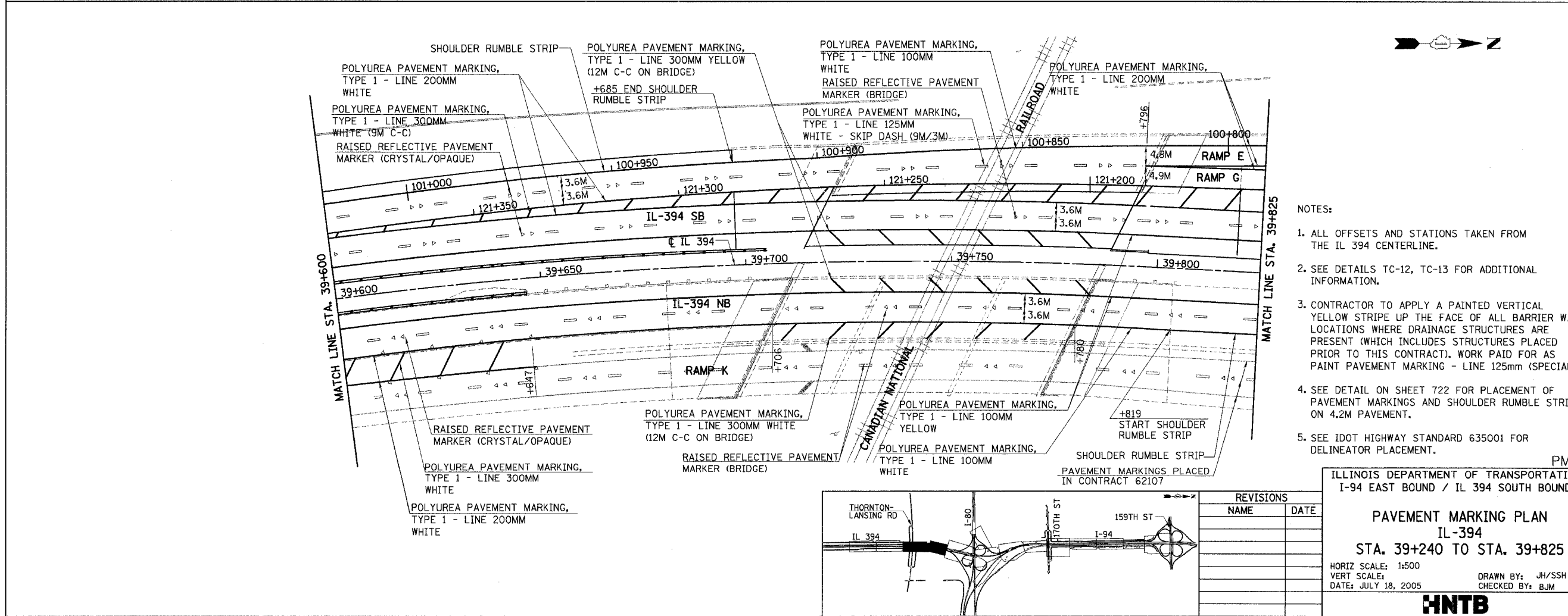
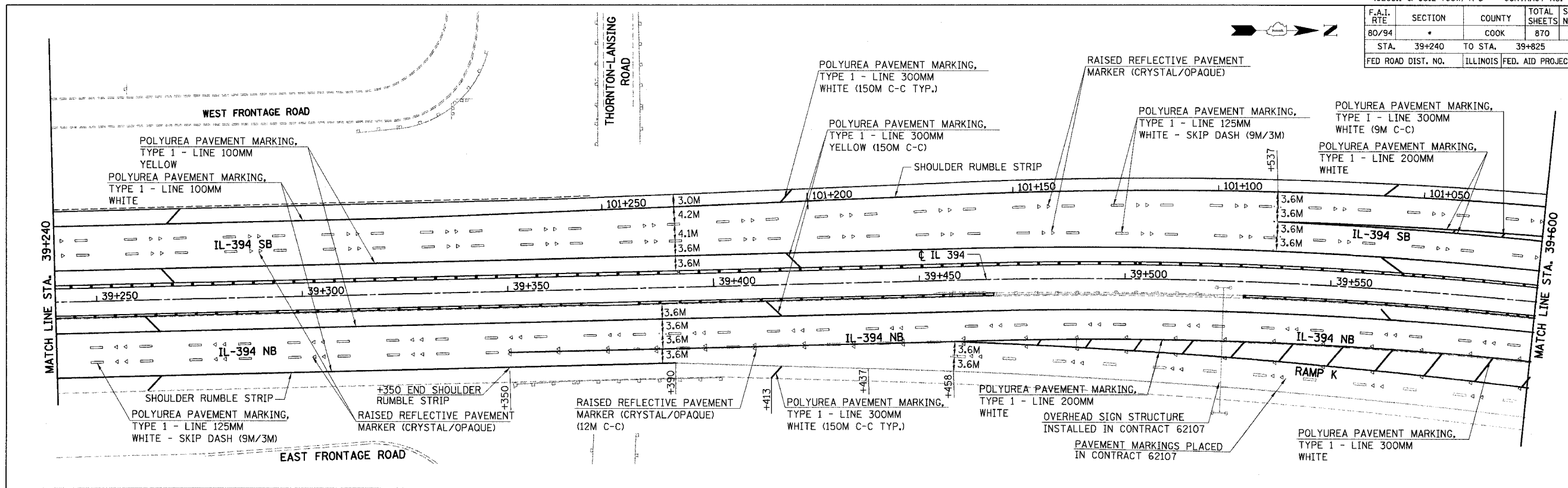
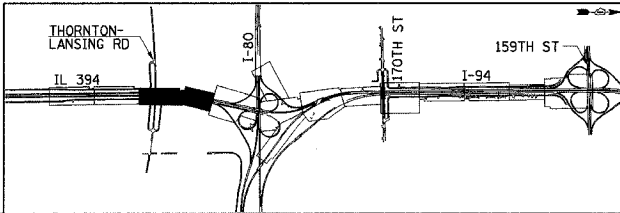


F.A.I. RTE	SECTION	COUNTY	TOTAL SHEETS NO.	SHEET NO.
80/94		COOK	870	292
STA. 39+240 TO STA. 39+825		ILLINOIS FED. AID PROJECT		



- NOTES:
1. ALL OFFSETS AND STATIONS TAKEN FROM THE IL 394 CENTERLINE.
 2. SEE DETAILS TC-12, TC-13 FOR ADDITIONAL INFORMATION.
 3. CONTRACTOR TO APPLY A PAINTED VERTICAL YELLOW STRIPE UP THE FACE OF ALL BARRIER WALL LOCATIONS WHERE DRAINAGE STRUCTURES ARE PRESENT (WHICH INCLUDES STRUCTURES PLACED PRIOR TO THIS CONTRACT). WORK PAID FOR AS PAINT PAVEMENT MARKING - LINE 125mm (SPECIAL).
 4. SEE DETAIL ON SHEET 722 FOR PLACEMENT OF PAVEMENT MARKINGS AND SHOULDER RUMBLE STRIPS ON 4.2M PAVEMENT.
 5. SEE IDOT HIGHWAY STANDARD 635001 FOR DELINEATOR PLACEMENT.



REVISIONS	
NAME	DATE

PM-6

ILLINOIS DEPARTMENT OF TRANSPORTATION
I-94 EAST BOUND / IL 394 SOUTH BOUND

PAVEMENT MARKING PLAN
IL-394
STA. 39+240 TO STA. 39+825

HORIZ SCALE: 1:500
VERT SCALE: 1:500
DATE: JULY 18, 2005

DRAWN BY: JH/SSH
CHECKED BY: BJM

HNTB