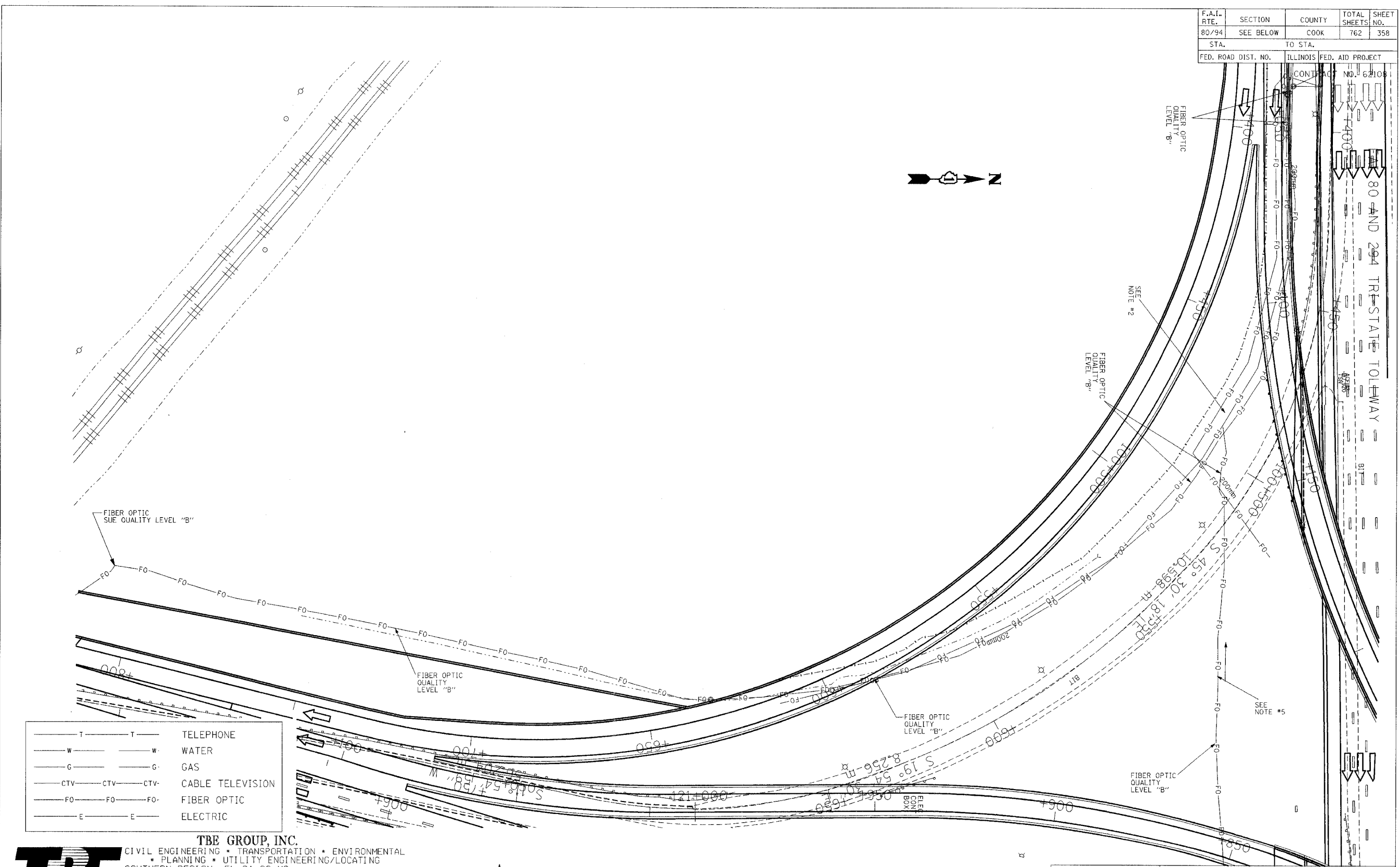


|                     |           |                  |                    |           |
|---------------------|-----------|------------------|--------------------|-----------|
| F.A.I. RTE.         | SECTION   | COUNTY           | TOTAL SHEETS       | SHEET NO. |
| 80/94               | SEE BELOW | COOK             | 762                | 358       |
| STA.                | TO STA.   |                  |                    |           |
| FED. ROAD DIST. NO. | ILLINOIS  | FED. AID PROJECT | CONTRACT NO. 62105 |           |



|     |                  |
|-----|------------------|
| T   | TELEPHONE        |
| W   | WATER            |
| G   | GAS              |
| CTV | CABLE TELEVISION |
| FO  | FIBER OPTIC      |
| E   | ELECTRIC         |

**TBE GROUP, INC.**  
 CIVIL ENGINEERING • TRANSPORTATION • ENVIRONMENTAL  
 • PLANNING • UTILITY ENGINEERING/LOCATING  
 SOUTHERN REGION: FL, GA, SC, NC  
 NORTHERN REGION: IL, IN, MI, OH, MD, NJ, NY  
 PA, VA, CANADA  
 WESTERN REGION: AZ, NV, NM, TX, CA, OR, UT, WA

IL09500122  
 TBE SUE PAGE NO: 13 of 52  
 Signature \_\_\_\_\_

SUE Quality Level "A" : Test Holes  
 SUE Quality Level "B" : Designating



205 W. WACKER DRIVE  
 SUITE 1020  
 CHICAGO, IL 60606  
 (312) 704-1970

Utilities shown on these plans as depicted in the legend have been investigated by TBE Group, Inc in accordance with SUE Industry Standards as of 2/8/02.  
 All other information shown has been provided to TBE Group, Inc by others.

| REVISIONS |      |
|-----------|------|
| NAME      | DATE |
|           |      |
|           |      |
|           |      |
|           |      |
|           |      |

ILLINOIS DEPARTMENT OF TRANSPORTATION  
 E.of IL RT.83/US RT.6 to E.Burnham Ave.  
 I-80/I-94 Burnham Ave. to State Line  
 I-80/I-94 (Tollway)E.of I-94 to W. of RT.83/US 6.  
 I-94/IL RT. 394 S.of US 6 to 186th Street(N.bound & S.bound)  
 Contract No. 62110, 62111,62114,62105,62107,62108  
 SCALE : 500 DRAWN BY : JAC  
 SQL "B" DATE : 2/8/02 CHECKED BY