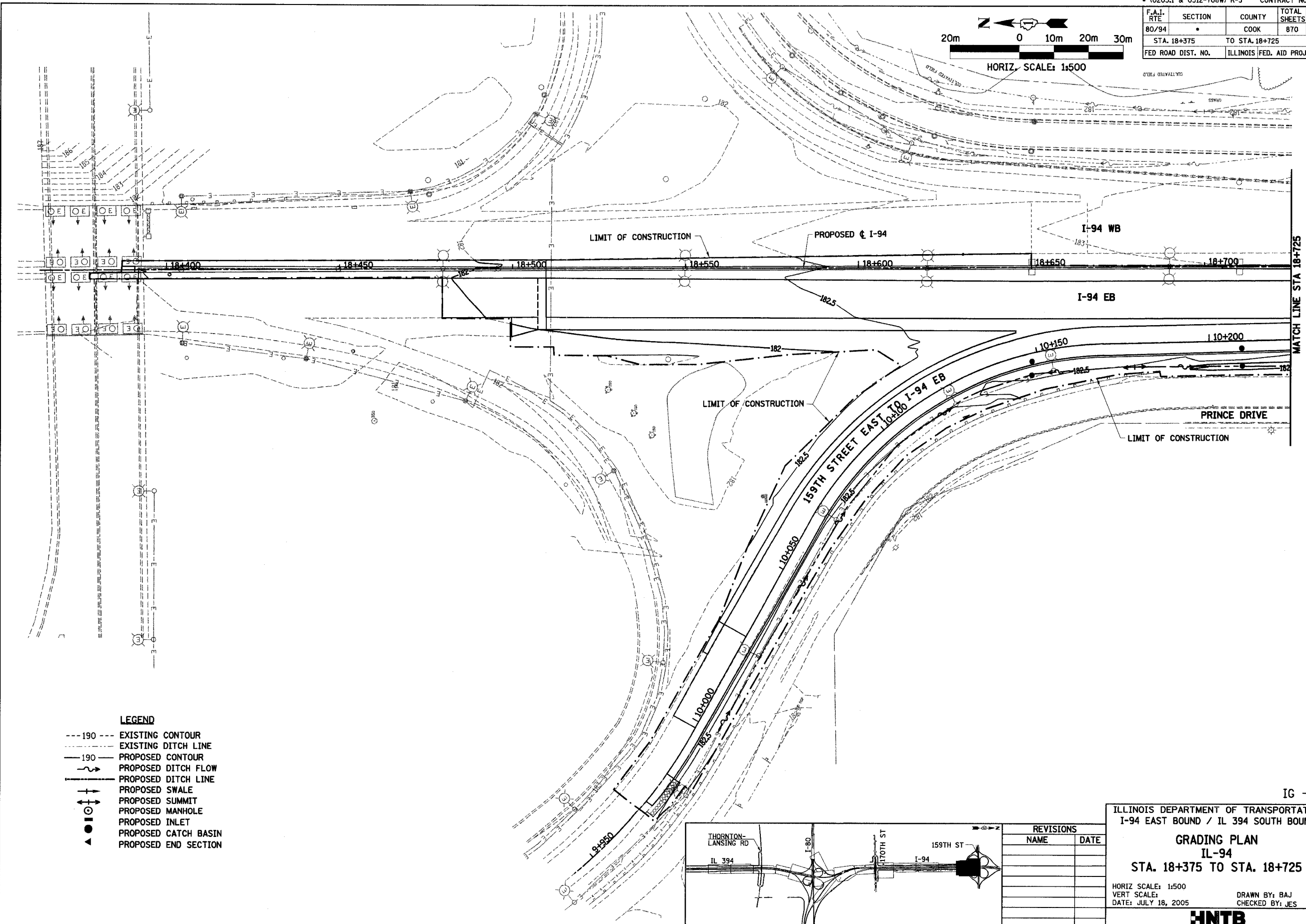
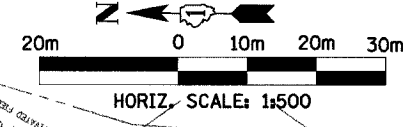
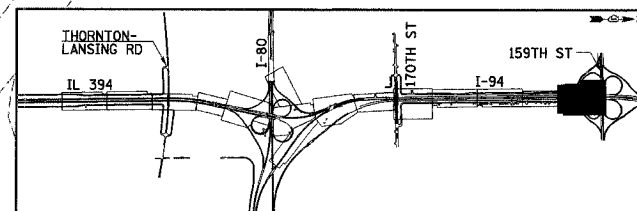


F.A.I. RTE	SECTION	COUNTY	TOTAL SHEETS	SHEET NO.
80/94		COOK	870	371
STA. 18+375		TO STA. 18+725		
FED ROAD DIST. NO.		ILLINOIS FED. AID PROJECT		



- LEGEND**
- 190--- EXISTING CONTOUR
  - - - - - EXISTING DITCH LINE
  - 190— PROPOSED CONTOUR
  - ~ ~ ~ PROPOSED DITCH FLOW
  - - - - - PROPOSED DITCH LINE
  - +—+—+— PROPOSED SWALE
  - +—+—+— PROPOSED SUMMIT
  - PROPOSED MANHOLE
  - ◡ PROPOSED INLET
  - PROPOSED CATCH BASIN
  - ▲ PROPOSED END SECTION



REVISIONS	
NAME	DATE

IG - 1

ILLINOIS DEPARTMENT OF TRANSPORTATION  
I-94 EAST BOUND / IL 394 SOUTH BOUND

**GRADING PLAN**  
**IL-94**  
**STA. 18+375 TO STA. 18+725**

HORIZ SCALE: 1:500  
VERT SCALE: 1:10  
DATE: JULY 18, 2005

DRAWN BY: BAJ  
CHECKED BY: JES

**HNTB**