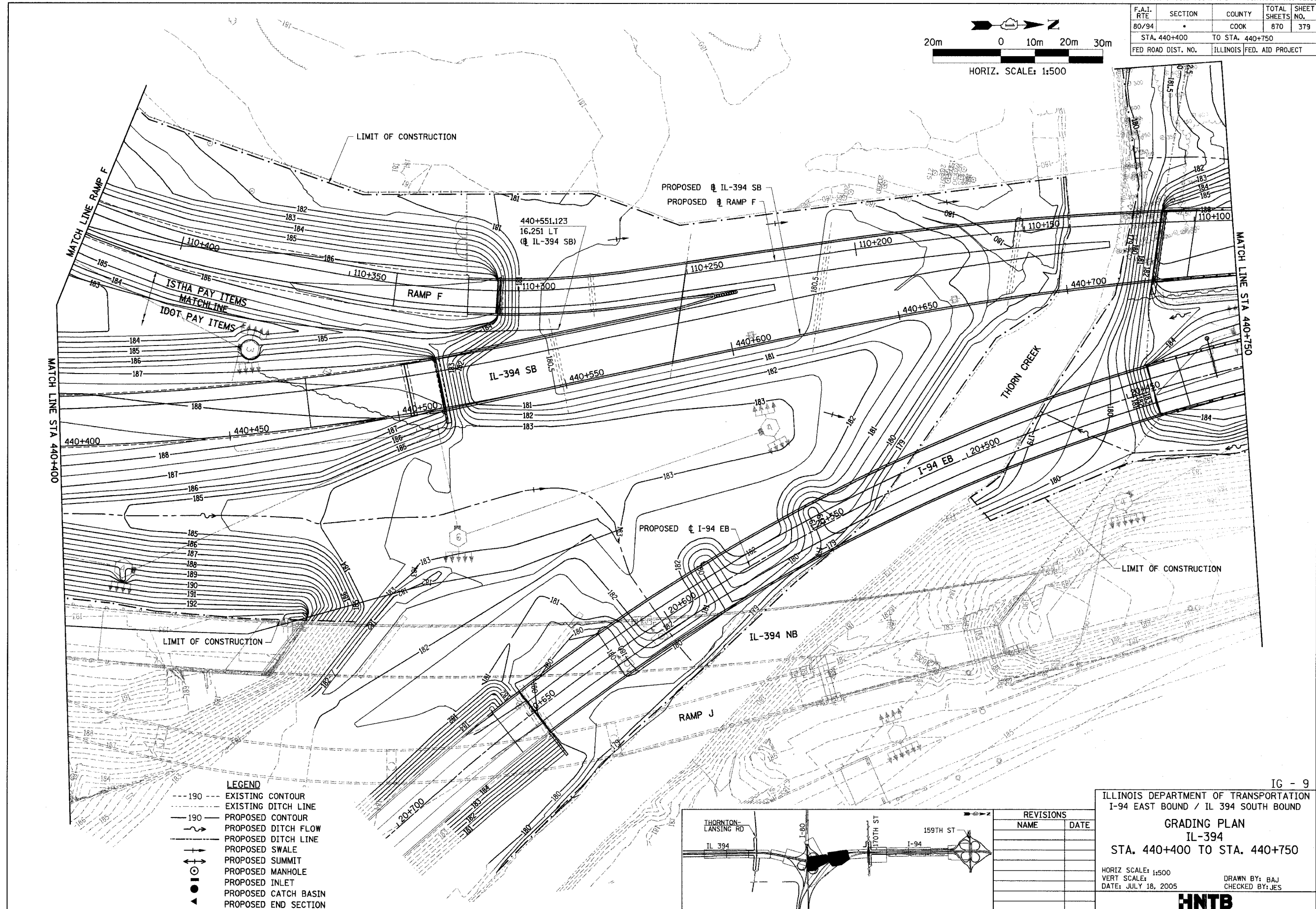
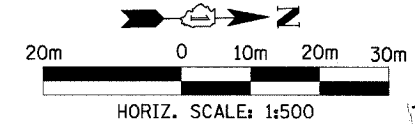
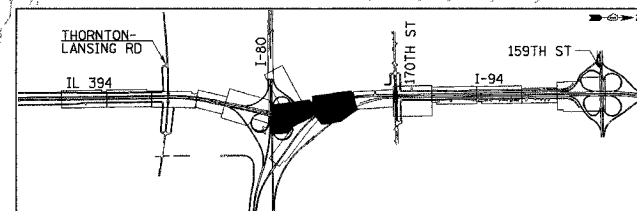


F.A.I. RTE	SECTION	COUNTY	TOTAL SHEETS	SHEET NO.
80/94	*	COOK	870	379
STA. 440+400		TO STA. 440+750		
FED ROAD DIST. NO.		ILLINOIS FED. AID PROJECT		



**LEGEND**

- 190--- EXISTING CONTOUR
- - - - - EXISTING DITCH LINE
- 190- PROPOSED CONTOUR
- ~ ~ ~ PROPOSED DITCH FLOW
- - - - - PROPOSED DITCH LINE
- - - - - PROPOSED SWALE
- ↑ ↑ ↑ PROPOSED SUMMIT
- ⊙ PROPOSED MANHOLE
- ⊙ PROPOSED INLET
- PROPOSED CATCH BASIN
- ▲ PROPOSED END SECTION



REVISIONS		
NAME	DATE	

IG - 9

ILLINOIS DEPARTMENT OF TRANSPORTATION  
I-94 EAST BOUND / IL 394 SOUTH BOUND

**GRADING PLAN**  
IL-394  
STA. 440+400 TO STA. 440+750

HORIZ SCALE: 1:500  
VERT SCALE: 1:500  
DATE: JULY 18, 2005

DRAWN BY: BAJ  
CHECKED BY: JES

**HNTB**