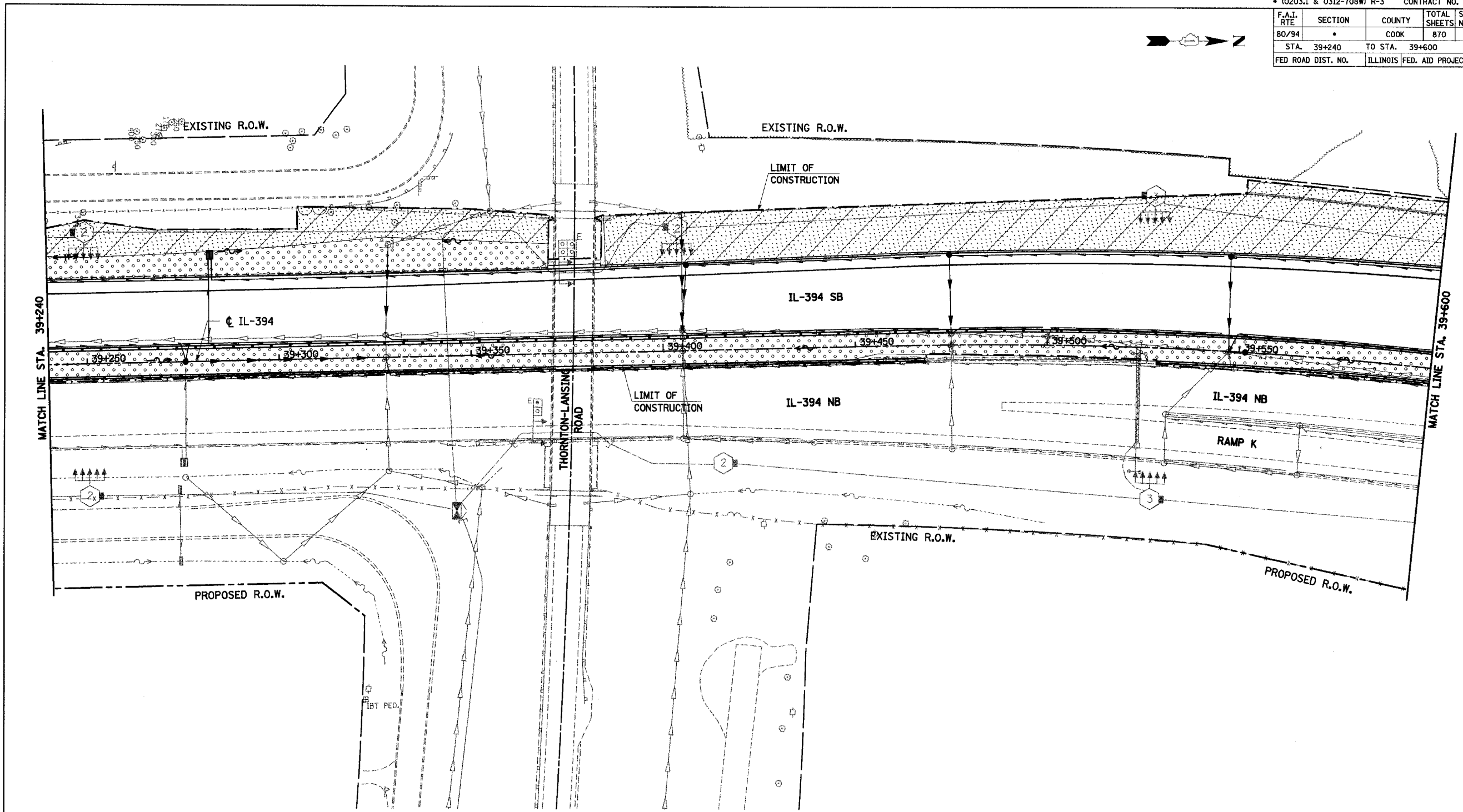


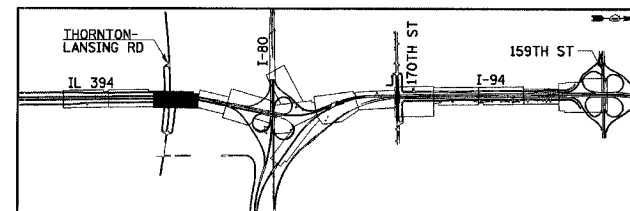
F.A.I. RTE	SECTION	COUNTY	TOTAL SHEETS	SHEET NO.
80/94		COOK	870	396
STA. 39+240		TO STA. 39+600		
FED ROAD DIST. NO.		ILLINOIS	FED. AID PROJECT	



NOTES:

1. WORK THIS SHEET WITH THE EROSION AND SEDIMENT CONTROL GENERAL NOTES, LEGEND AND STRATEGY SHEETS.
2. ALL STATIONING AND OFFSET MEASUREMENTS OFF ϕ IL-394 UNLESS OTHERWISE NOTED.
3. ALL DIMENSIONS ARE IN METERS (m) UNLESS OTHERWISE NOTED.
4. CLASS 4 SEEDING SHOULD BE ON BACK SLOPE OF 394 LEFT DITCH.

FINAL CONDITION



REVISIONS	
NAME	DATE

ILLINOIS DEPARTMENT OF TRANSPORTATION
I-94 EAST BOUND / IL 394 SOUTH BOUND

EROSION CONTROL PLAN
IL 394
STA. 39+240 TO STA. 39+600

HORIZ SCALE: 1:500
VERT SCALE:
DATE: JULY 18, 2005
DRAWN BY: JPH
CHECKED BY: MAM

HNTB