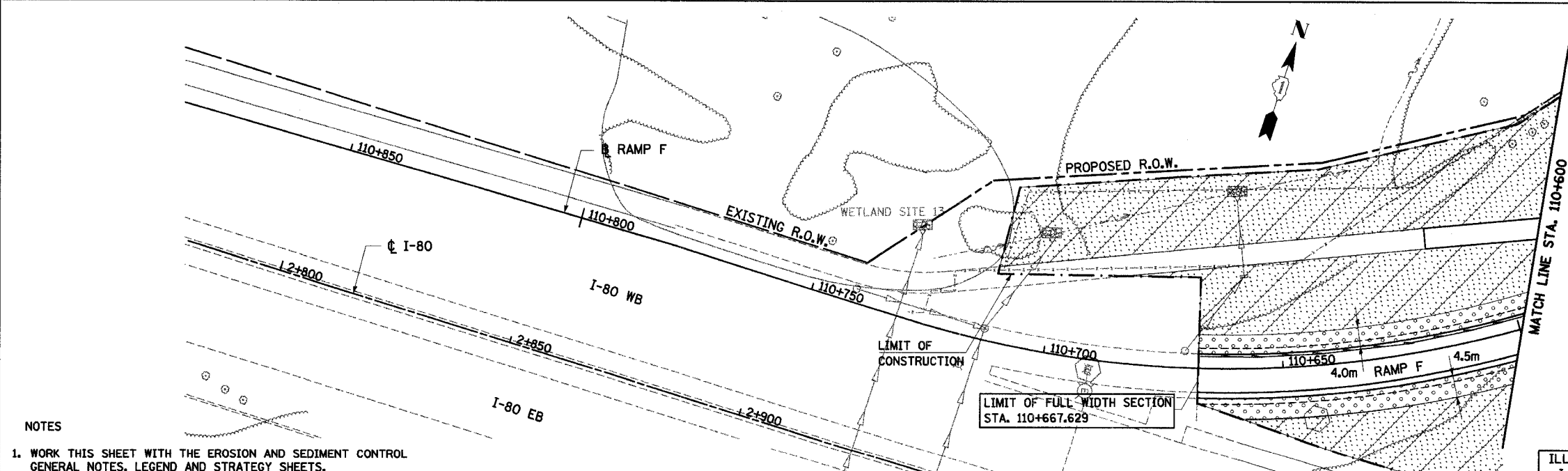
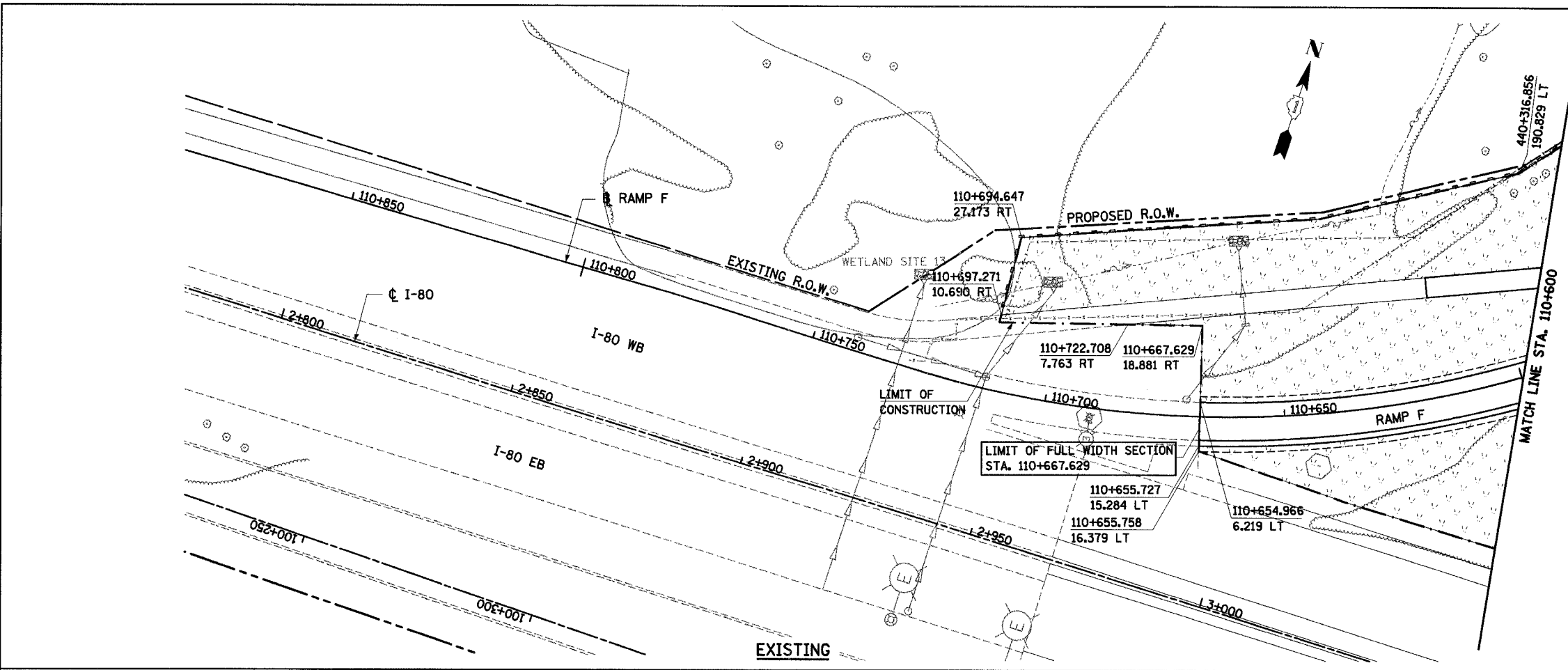
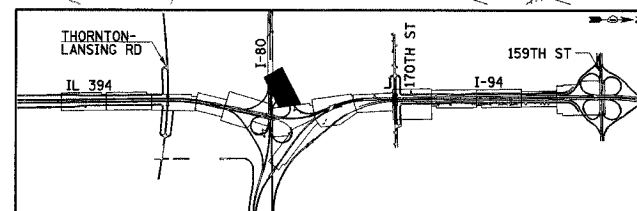


| F.A.I. RTE | SECTION | COUNTY | TOTAL SHEETS | SHEET NO. |
|------------------------------|---------|---------------------------|--------------|-----------|
| 80/94 | * | COOK | 870 | 408 |
| STA. 110+600 TO STA. 110+750 | | | | |
| FED ROAD DIST. NO. | | ILLINOIS FED. AID PROJECT | | |



NOTES

1. WORK THIS SHEET WITH THE EROSION AND SEDIMENT CONTROL GENERAL NOTES, LEGEND AND STRATEGY SHEETS.
2. ERODIBLE AREAS TO BE TEMPORARILY SEEDED DURING CONSTRUCTION AS REQUIRED BY THE EROSION AND SEDIMENT CONTROL GENERAL NOTES.
3. ALL STATIONING AND OFFSET MEASUREMENTS OFF RAMP F UNLESS OTHERWISE NOTED.
4. ALL DIMENSIONS ARE IN METERS (m) UNLESS OTHERWISE NOTED.
5. TEMPORARY FENCE TO BE PLACED AT LOCATIONS ALONG ALL CONSTRUCTION LIMITS WHERE PERIMETER EROSION BARRIER IS NOT INDICATED (TEMPORARY FENCE NOT SHOWN AT THESE LOCATIONS FOR CLARITY).
6. COORDINATE EROSION CONTROL WITH CONTRACT 62105.



| REVISIONS | |
|-----------|------|
| NAME | DATE |
| | |
| | |
| | |
| | |
| | |

EC-27

ILLINOIS DEPARTMENT OF TRANSPORTATION
I-94 EAST BOUND / IL 394 SOUTH BOUND

**EROSION CONTROL PLAN
RAMP F
STA. 110+600 TO STA. 110+750**

HORIZ SCALE: 1:500
VERT SCALE: 1:500
DATE: JULY 18, 2005

DRAWN BY: JPH
CHECKED BY: MAM

HNTB