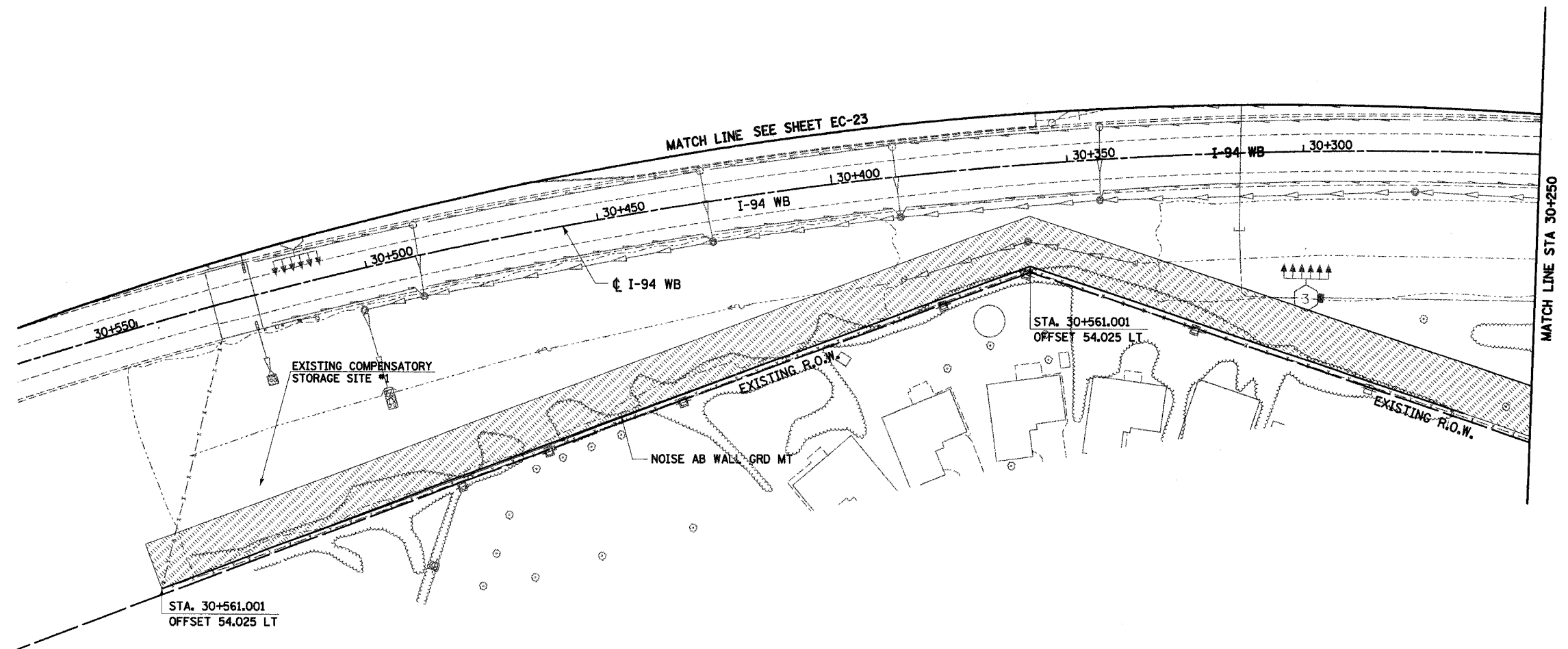


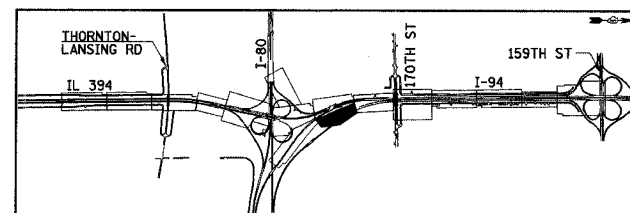
F.A.I. RTE	SECTION	COUNTY	TOTAL SHEETS	SHEET NO.
80/94	*	COOK	870	410
STA.		TO STA.		
FED ROAD DIST. NO.		ILLINOIS	FED. AID PROJECT	



NOTES:

1. WORK THIS SHEET WITH THE EROSION AND SEDIMENT CONTROL GENERAL NOTES, LEGEND AND STRATEGY SHEETS.
2. ALL STATIONING AND OFFSET MEASUREMENTS OFF ϕ I-94 WB UNLESS OTHERWISE NOTED.
3. ALL DIMENSIONS ARE IN METERS (m) UNLESS OTHERWISE NOTED.

FINAL CONDITION



REVISIONS	
NAME	DATE

EC-29

ILLINOIS DEPARTMENT OF TRANSPORTATION
I-94 EAST BOUND / IL 394 SOUTH BOUND

EROSION CONTROL PLAN
I-94 WB
STA. 30+250 TO STA. 30+550

HORIZ SCALE: 1:500
VERT SCALE:
DATE: JULY 18, 2005

DRAWN BY: JPH
CHECKED BY: JES

HNTB