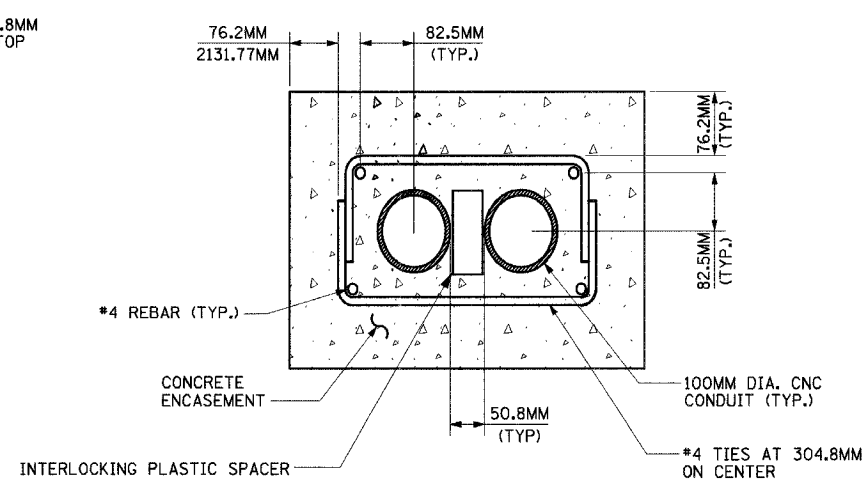
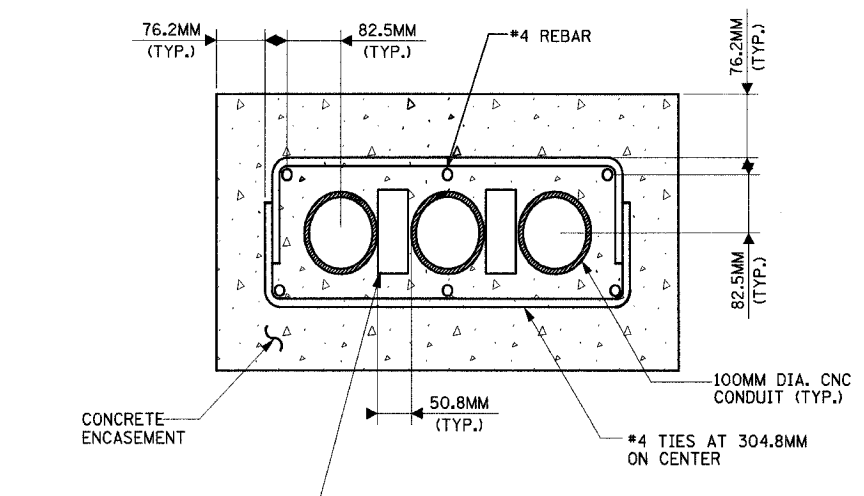


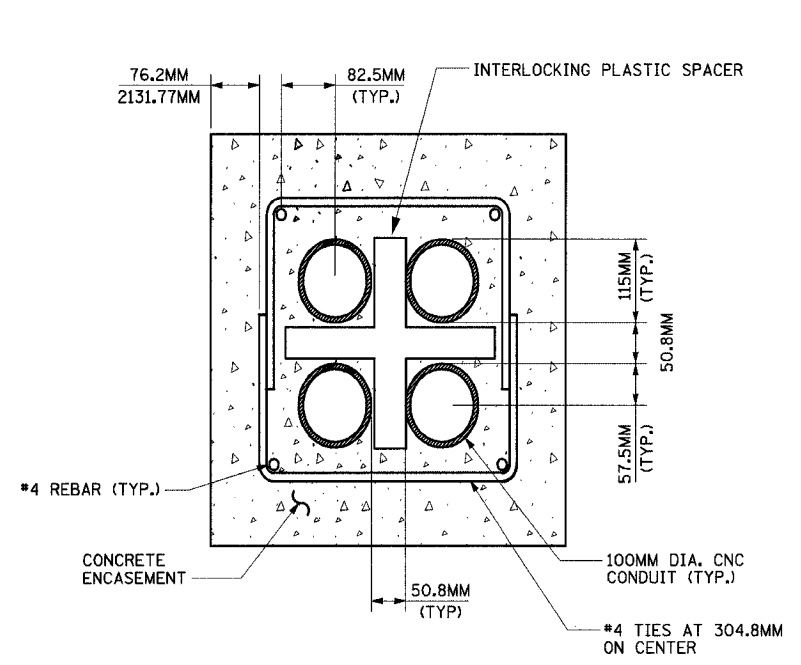
DETAIL "A"
PVC CONDUIT ENCASED IN
REINFORCED CONCRETE
NOT TO SCALE



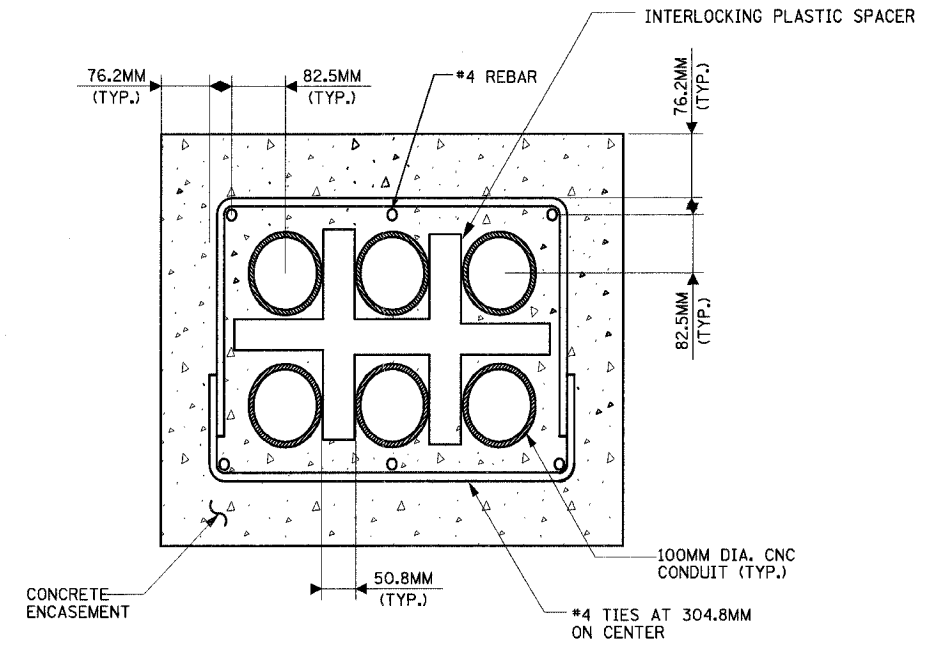
DETAIL "B"
PVC CONDUIT ENCASED IN
REINFORCED CONCRETE
NOT TO SCALE



DETAIL "C"
PVC CONDUIT ENCASED IN
REINFORCED CONCRETE
NOT TO SCALE



DETAIL "D"
PVC CONDUIT ENCASED IN
REINFORCED CONCRETE
NOT TO SCALE



DETAIL "E"
PVC CONDUIT ENCASED IN
REINFORCED CONCRETE
NOT TO SCALE

NOTES:

- REFER TO ROADWAY LIGHTING PLANS FOR DUCT BANKS CROSSING ROADWAYS.
- CONDUITS IN DUCT BANKS SHALL BE FREE FROM ANY OBSTRUCTION OR DEBRIS.
- SPARE CONDUIT WHICH IS NOT USED ON EITHER SIDE OF THE ROADWAY SHALL BE THREADED, CAPPED AND SEALED FOR FUTURE USE.
- CONDUIT ENDS SHALL BE PROTECTED FROM PHYSICAL DAMAGE WITH PROTECTIVE STEEL COVERS UNTIL PERMANENT WIRING IS INSTALLED.

REVISIONS	
NAME	DATE

ILLINOIS DEPARTMENT OF TRANSPORTATION
I-94 EAST BOUND / IL 394 SOUTH BOUND

UNDERGROUND DUCTBANK DETAILS

HORIZ SCALE: NONE
VERT SCALE: NONE
DATE: JULY 18, 2005

DRAWN BY: RPK
CHECKED BY: KMY

HNTB