

ALL DIMENSIONS IN MILLIMETERS EXCEPT
PAY ITEMS AND UNLESS NOTED OTHERWISE

F.A.I. RTE.	SECTION	COUNTY	TOTAL SHEETS	SHEET NO.
80/94	2626.2-R-1	COOK	870	437
STA.	TO STA.			
FED. ROAD DIST. NO.	ILLINOIS FED. AID PROJECT			

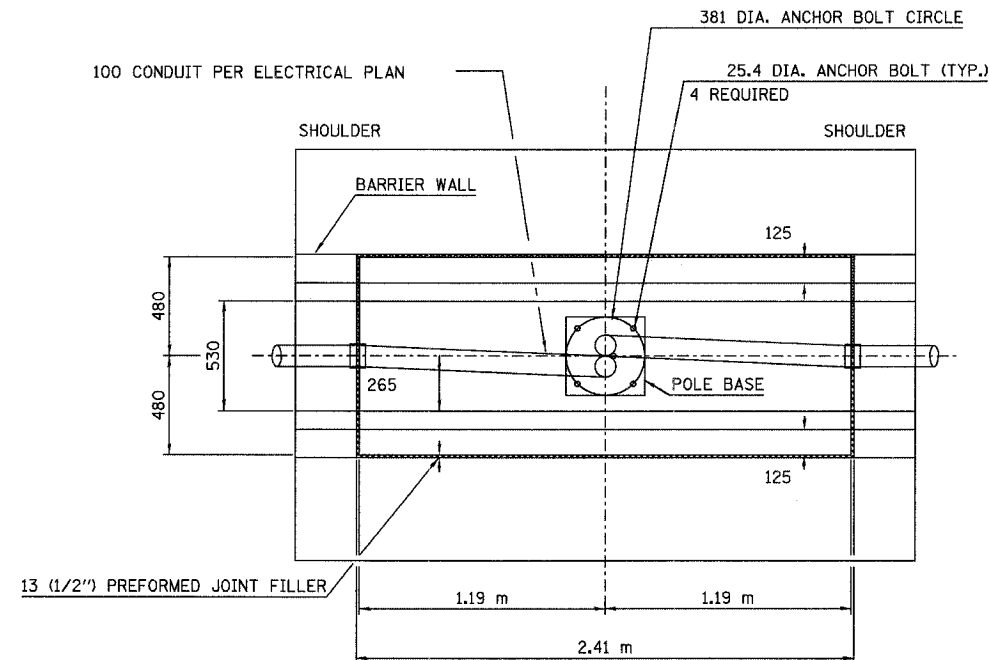
609.6 mm DIAMETER FOUNDATION DEPTH TABLE
FOR UP TO 15.24 m MOUNTING HEIGHT LIGHT POLE

TYPE OF SOIL	FOUND. DEPTH D	REINFORCEMENT IN FOUNDATION	
		VERTICAL BARS	SPIRAL
ROCK OR SOLIDIFIED SLAG	1.52 m	NONE	NONE
DENSE SAND	2.36 m	8-#20 x 2.74 m	*3 x 27.43 m
MEDIUM SAND	2.51 m	8-#20 x 2.87 m	*3 x 28.65 m
LOOSE SAND	2.74 m	8-#20 x 3.09 m	*3 x 30.48 m
STIFF CLAY	2.13 m	8-#20 x 2.48 m	*3 x 24.38 m
MEDIUM CLAY	2.89 m	8-#20 x 3.25 m	*3 x 31.69 m
SOFT CLAY	3.96 m	8-#20 x 4.32 m	*3 x 43.89 m

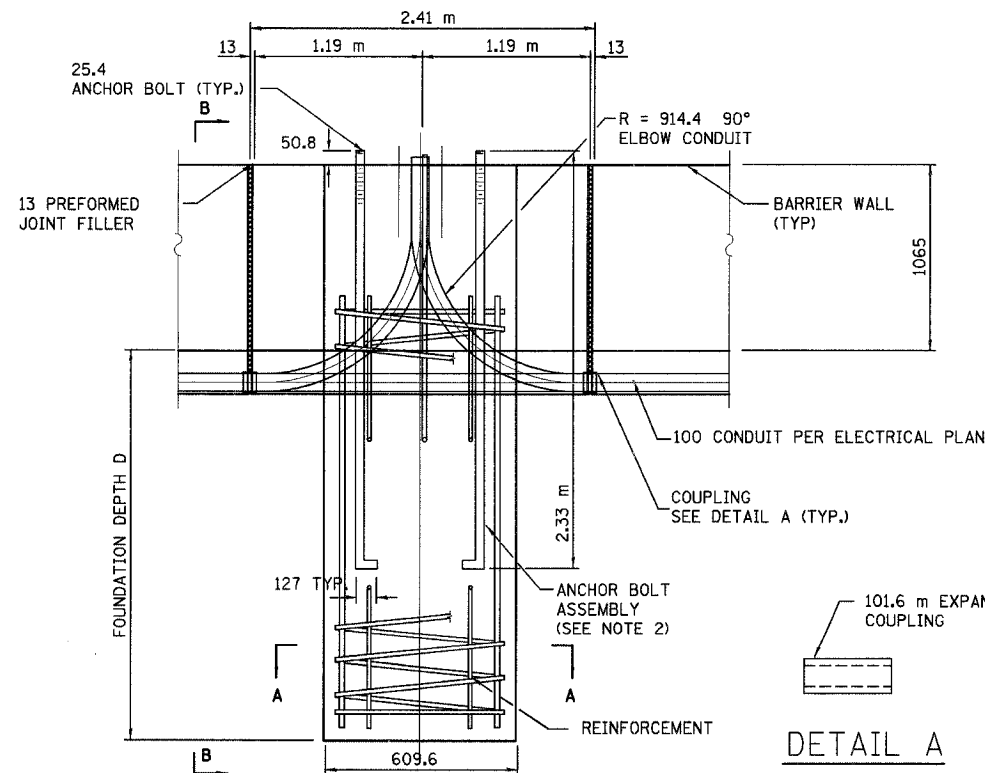
DESIGN: 125 KPH AASHTO

NOTES:

- ALL DIMENSIONS ARE IN MILLIMETERS UNLESS OTHERWISE SHOWN.
- THE ANCHOR BOLTS AND RACEWAYS SHALL BE PROPERLY SECURED IN PLACE BEFORE THE CONCRETE IS PLACED IN THE FORMS.
- THE CONTRACTOR AT HIS OPTION MAY SUBSTITUTE #15 TIES AT #304.8 CTRS. FOR THE #3 SPIRAL. TACKWELDED TYPE BOLT MAY BE SUBSTITUTED FOR THE HOOK TYPE BOLT.
- COLD BENDING OF THE HOOK BOLT SHALL NOT BE ALLOWED.
- EXCAVATION FOR THE POLE FOUNDATION SHALL BE MADE WITH AN AUGER 609.6 mm IN DIAMETER.
- THE ENGINEER SHALL DETERMINE THE TYPE OF SOIL DURING EXCAVATION AND SELECT THE DESIGN DEPTH OF FOUNDATION FROM THE DESIGN TABLE USING THE DOMINANT CHARACTERISTIC OF THE SOIL ENCOUNTERED.
- CONDUIT LOCATION IN THE STATE OF INDIANA IS PLACED BENEATH THE CONCRETE BARRIER WALL. SEE DETAILS.

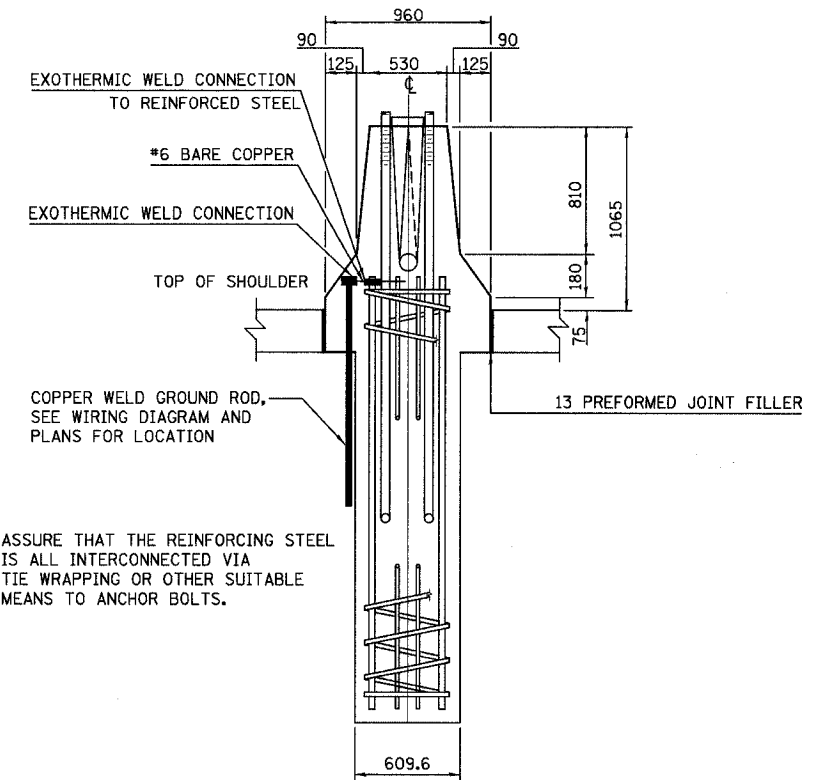


PLAN

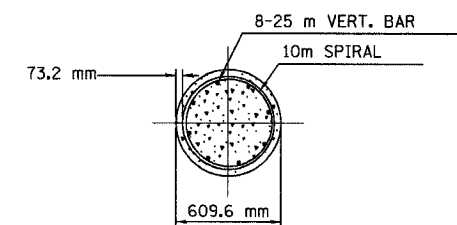


ELEVATION

DETAIL A



SECTION B-B



SECTION A-A

REVISIONS	
NAME	DATE

ED19-8
ILLINOIS DEPARTMENT OF TRANSPORTATION
I-80/94/US 6
KINGERY-BORMAN EXPRESSWAY
BURNHAM ROAD TO US 41
609.6 mm DIA. LIGHT POLE FOUNDATION
INTEGRAL WITH DOUBLE FACE BARRIER WALL

SCALE 1:500
DATE 12/03
DRAWN BY ACE/CAD
CHECKED BY TJW

