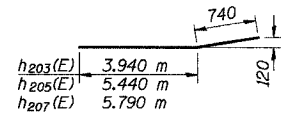
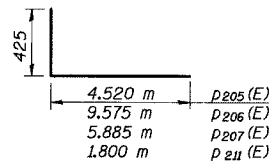
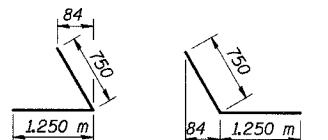
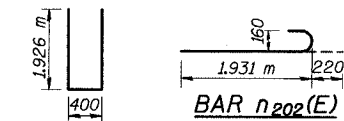


STATE OF ILLINOIS  
DEPARTMENT OF TRANSPORTATION

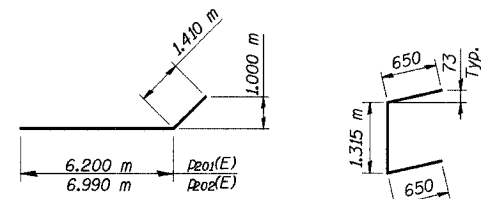
ROUTE NO.	SECTION	COUNTY	TOTAL SHEETS	SHEET NO.	SHEET NO. 24 29 SHEETS
F. A. I. 80/94		COOK	870	466	
FED. ROAD DIST. NO. 1			ILLINOIS FED. AID PROJECT-		
10203J & 0312-708W R-3			CONTRACT NO. 62108		



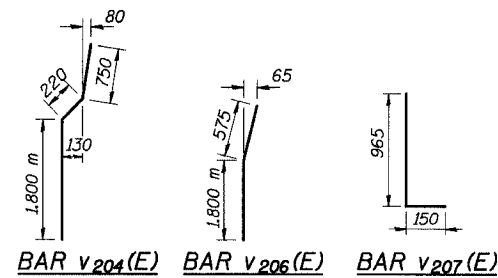
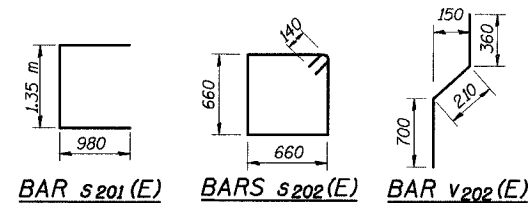
BAR h203(E), h205(E) or h207(E)



BAR p205(E), p206(E), p207(E) or p211(E)



BAR p201(E) or p202(E) BAR u201(E)

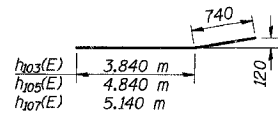


SOUTH ABUTMENT  
BILL OF MATERIAL

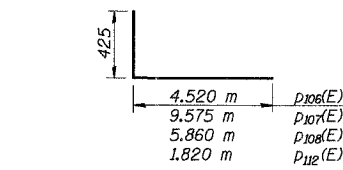
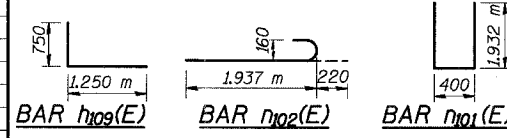
Bar	No.	Size	Length (m)	Shape
h200(E)	10	#15	9.000	—
h201(E)	10	#15	6.250	—
h203(E)	9	#15	4.680	—
h204(E)	15	#15	4.700	—
h205(E)	9	#15	6.180	—
h206(E)	15	#15	6.200	—
h207(E)	1	#15	6.530	—
h208(E)	1	#15	6.550	—
h209(E)	14	#15	2.000	—
h210(E)	14	#15	2.000	—
h211(E)	4	#20	9.000	—
h212(E)	4	#20	6.250	—
h213(E)	4	#15	2.400	—
n201(E)	53	#20	4.252	—
n202(E)	18	#20	2.151	—
p201(E)	3	#25	7.510	—
p202(E)	3	#25	8.400	—
p203(E)	10	#25	10.440	—
p204(E)	2	#25	3.000	—
p205(E)	9	#25	4.945	—
p206(E)	3	#25	10.000	—
p207(E)	3	#25	6.310	—
p208(E)	6	#25	4.725	—
p209(E)	6	#25	6.225	—
p210(E)	6	#25	6.575	—
p211(E)	3	#25	2.225	—
s201(E)	116	#15	3.310	—
s202(E)	63	#15	2.920	—
u201(E)	7	#15	2.615	—
v201(E)	98	#15	2.550	—
v202(E)	49	#15	1.270	—
v203(E)	49	#15	0.900	—
v204(E)	33	#20	2.770	—
v205(E)	39	#20	2.780	—
v206(E)	6	#20	2.375	—
v207(E)	16	#15	1.115	—
v208(E)	26	#15	2.000	—

ITEM	UNIT	QUANTITY
Structure Excavation	m <sup>3</sup>	213
Concrete Structures	m <sup>3</sup>	74.8
Controlled Low-Strength Material	m <sup>3</sup>	5.2
Reinforcement Bars, Epoxy Coated	kg	5060
Furnishing Steel Piles HP 310x79	m	527
Driving Steel Piles	m	527
Test Pile Steel HP 310x79	Each	1
Bar Splicers	Each	49
Porous Granular Embankment	m <sup>3</sup>	93

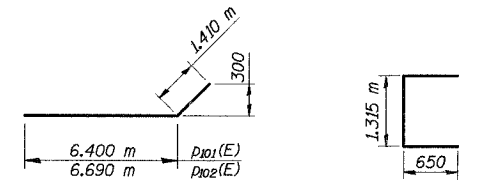
Reinforcement bars designated (E) shall be epoxy coated.



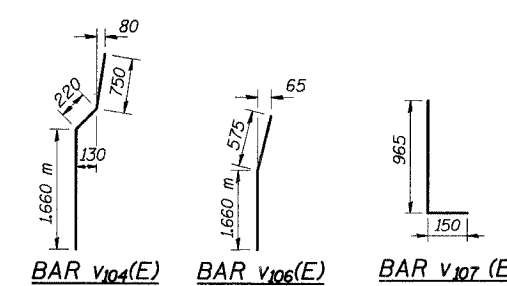
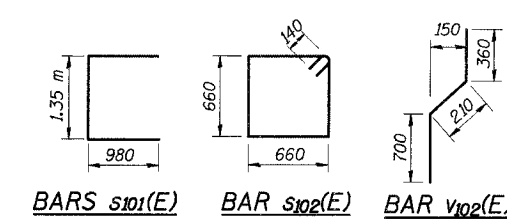
BAR h103(E), h105(E) or h107(E)



BAR p106(E), p107(E), p108(E) or p112(E)



BAR p101(E) or p102(E) BAR u101(E)

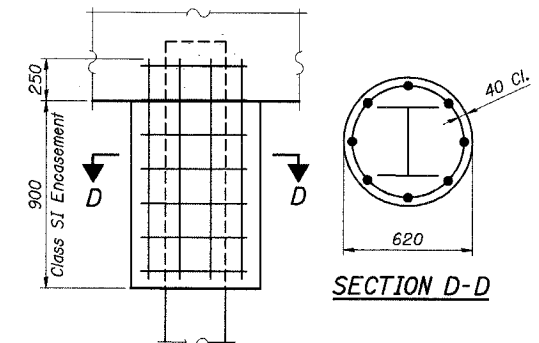


NORTH ABUTMENT  
BILL OF MATERIAL

Bar	No.	Size	Length (m)	Shape
h101(E)	10	#15	9.000	—
h102(E)	10	#15	6.250	—
h103(E)	9	#15	4.580	—
h104(E)	15	#15	4.600	—
h105(E)	9	#15	5.580	—
h106(E)	15	#15	5.600	—
h107(E)	1	#15	5.880	—
h108(E)	1	#15	5.900	—
h109(E)	28	#15	2.000	—
h110(E)	4	#20	9.000	—
h111(E)	4	#20	6.250	—
h112(E)	4	#15	2.400	—
n101(E)	49	#20	4.264	—
n102(E)	18	#20	2.157	—
p101(E)	3	#25	7.810	—
p102(E)	3	#25	8.100	—
p103(E)	3	#25	7.190	—
p104(E)	7	#25	11.000	—
p105(E)	4	#25	3.000	—
p106(E)	9	#25	4.945	—
p107(E)	3	#25	10.000	—
p108(E)	3	#25	6.285	—
p109(E)	6	#25	4.625	—
p110(E)	6	#25	5.625	—
p111(E)	6	#25	5.850	—
p112(E)	3	#25	2.245	—
s101(E)	116	#15	3.310	—
s102(E)	58	#15	2.920	—
u101(E)	7	#15	2.615	—
v101(E)	98	#15	2.550	—
v102(E)	49	#15	1.270	—
v103(E)	49	#15	0.900	—
v104(E)	31	#20	2.630	—
v105(E)	37	#20	2.640	—
v106(E)	6	#20	2.235	—
v107(E)	16	#15	1.115	—
v108(E)	26	#15	2.000	—

ITEM	UNIT	QUANTITY
Structure Excavation	m <sup>3</sup>	205
Concrete Structures	m <sup>3</sup>	76.5
Controlled Low-Strength Material	m <sup>3</sup>	4.9
Reinforcement Bars, Epoxy Coated	kg	4890
Furnishing Steel Piles HP 310x79	m	472
Driving Steel Piles	m	472
Test Pile Steel HP 310x79	Each	1
Bar Splicers	Each	49
Porous Granular Embankment	m <sup>3</sup>	92

Reinforcement bars designated (E) shall be epoxy coated.



PILE ENCASEMENT DETAIL

Welded wire fabric 152x152-MW25.8xMW25.8 with a mass of 2.91 kg/m<sup>2</sup>. The cost of Excavation, Class SI Concrete Encasement and Reinforcement is included with Furnishing Piles. Forms for encasement may be omitted when soil conditions permit.

Notes:  
1. Work this Sheet with Sheets 20 thru 23 of 29 Sheets.

ILLINOIS DEPARTMENT OF TRANSPORTATION  
I-94 EAST BOUND / IL 394 SOUTH BOUND  
ABUTMENT DETAILS  
SB ILLINOIS ROUTE 394 OVER INTERSTATE 80  
F.A.P. 332 SECTION (0203J & 0312-708W) R-3  
COOK COUNTY  
STA. 440+193.335 STRUCTURE NO. 016-2796  
DATE 07/18/05  
SCALE



J:\Research\p...  
09-JUL-2005 13:56

DESIGNED	JFA
CHECKED	JJK
DRAWN	LK
CHECKED	JJK/JFA