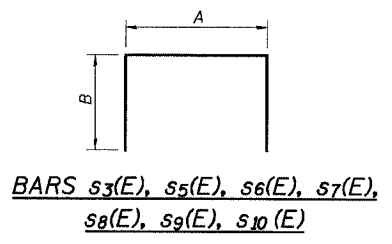
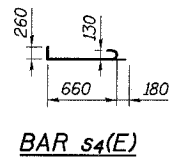
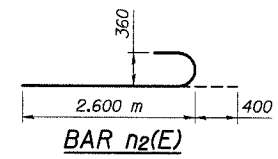
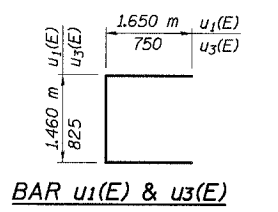
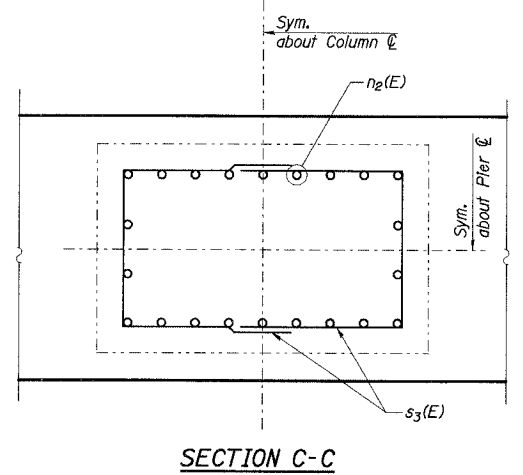
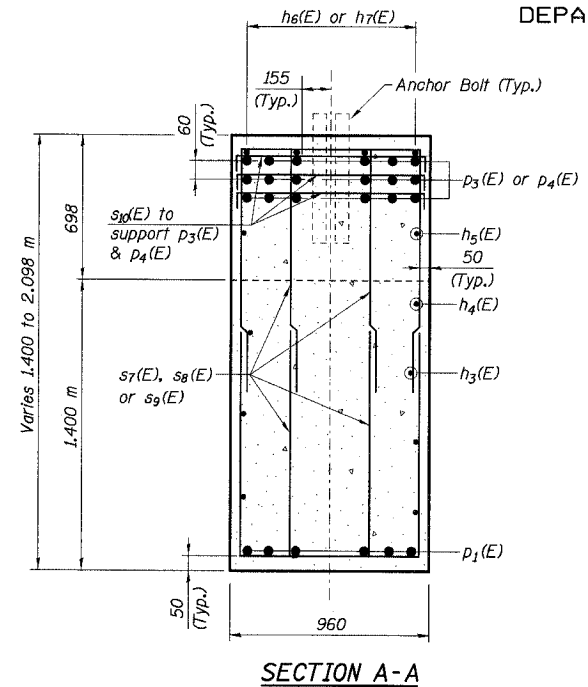
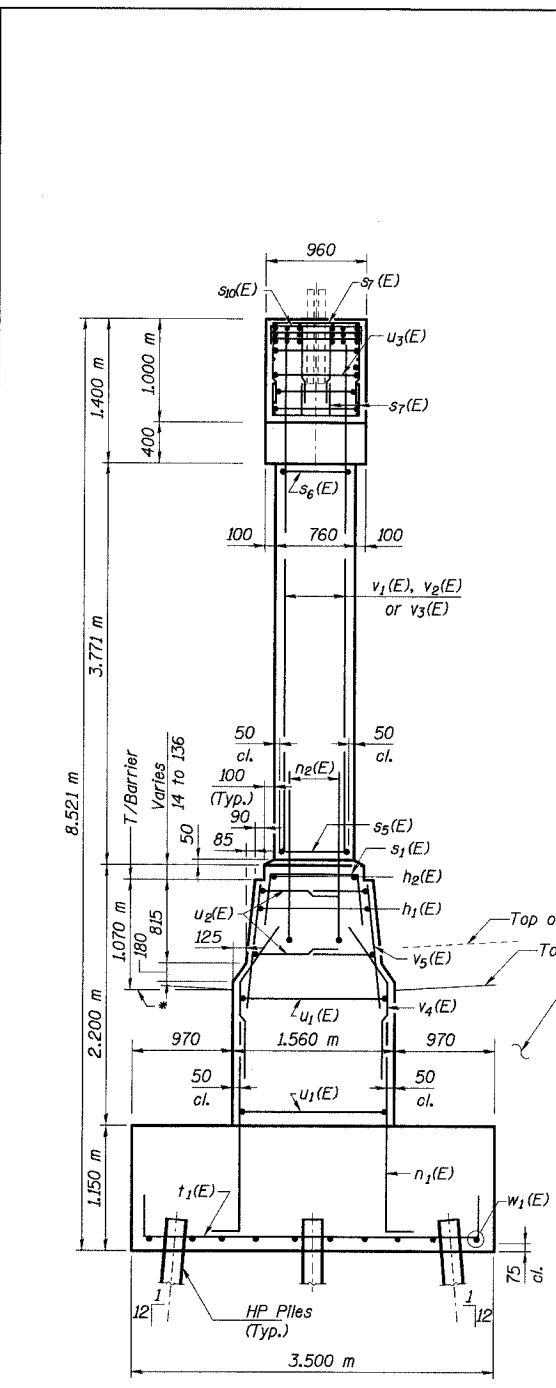


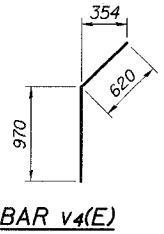
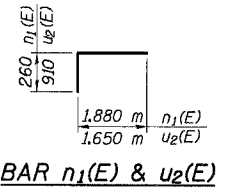
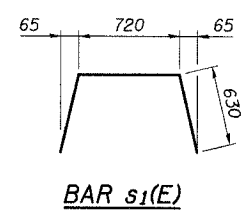
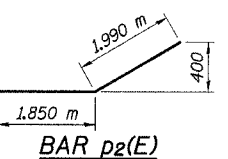
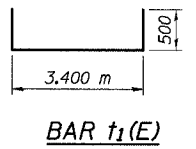
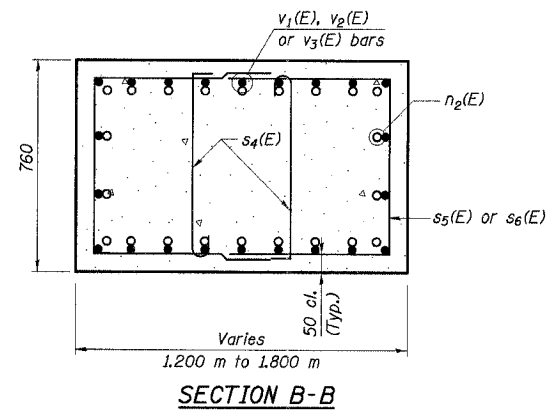
STATE OF ILLINOIS
DEPARTMENT OF TRANSPORTATION

| | | | | | |
|-----------------------|---------|----------|-------------------|-----------|---------------------------|
| ROUTE NO. | SECTION | COUNTY | TOTAL SHEETS | SHEET NO. | SHEET NO. 26 29 SHEETS |
| F. A. I. 80/94 | * | COOK | 870 | 468 | |
| FED. ROAD DIST. NO. 1 | | ILLINOIS | FED. AID PROJECT- | | CONTRACT NO. 62108 |
| | | | | | |



A & B DIMENSIONS

| Bar | A | B |
|--------|------|------|
| s3(E) | 0.60 | 0.85 |
| s5(E) | 0.66 | 1.02 |
| s6(E) | 0.66 | 1.20 |
| s7(E) | 0.63 | 0.87 |
| s8(E) | 0.63 | 0.97 |
| s9(E) | 0.63 | 1.32 |
| s10(E) | 0.86 | 0.26 |



PILE DATA

Type: HP 310x79
Capacity: 550 kN (Driven to 825 kN Bearing)
Est. Length: 14.79 m
No. Req'd: 45 (Includes 1 test pile)
Test Piles driven to 1240 kN

| | |
|----------|-----|
| DESIGNED | JFA |
| CHECKED | ACF |
| DRAWN | LK |
| CHECKED | ACF |

T/BARRIER ELEVATIONS

| Sta. | Elev. |
|-----------|---------|
| 3+215.676 | 184.941 |
| 3+220.000 | 184.889 |
| 3+225.000 | 184.833 |
| 3+226.276 | 184.819 |

BILL OF MATERIAL

| Bar | No. | Size | Length (m) | Shape |
|--------|-----|------|------------|-------|
| h1(E) | 14 | #15 | 9.000 | — |
| h2(E) | 5 | #20 | 10.500 | — |
| h3(E) | 12 | #15 | 7.750 | — |
| h4(E) | 2 | #15 | 9.000 | — |
| h5(E) | 2 | #15 | 4.000 | — |
| h6(E) | 20 | #15 | 3.310 | — |
| h7(E) | 4 | #15 | 1.860 | — |
| n1(E) | 164 | #15 | 2.140 | — |
| n2(E) | 66 | #30 | 3.000 | — |
| p1(E) | 6 | #30 | 10.600 | — |
| p2(E) | 8 | #15 | 3.840 | — |
| p3(E) | 18 | #30 | 11.000 | — |
| p4(E) | 12 | #30 | 5.500 | — |
| s1(E) | 58 | #15 | 1.980 | — |
| s3(E) | 18 | #15 | 2.300 | — |
| s4(E) | 78 | #15 | 1.100 | — |
| s5(E) | 36 | #15 | 2.700 | — |
| s6(E) | 42 | #15 | 3.060 | — |
| s7(E) | 32 | #15 | 2.370 | — |
| s8(E) | 32 | #15 | 2.570 | — |
| s9(E) | 172 | #15 | 3.270 | — |
| s10(E) | 47 | #15 | 1.380 | — |
| t1(E) | 46 | #30 | 4.400 | — |
| u1(E) | 8 | #20 | 4.760 | — |
| u2(E) | 16 | #20 | 2.560 | — |
| u3(E) | 10 | #15 | 2.325 | — |
| v1(E) | 22 | #30 | 4.970 | — |
| v2(E) | 22 | #30 | 5.200 | — |
| v3(E) | 22 | #30 | 5.420 | — |
| v4(E) | 116 | #15 | 1.590 | — |
| v5(E) | 116 | #15 | 1.420 | — |
| w1(E) | 30 | #15 | 6.500 | — |

| ITEM | UNIT | QUANTITY |
|----------------------------------|----------------|----------|
| Structure Excavation | m ³ | 249 |
| Concrete Structures | m ³ | 138.7 |
| Reinforcement Bars, Epoxy Coated | kg | 10,160 |
| Furnishing Steel Piles HP 310x79 | m | 651 |
| Driving Steel Piles | m | 651 |
| Test Pile Steel HP 310x79 | Each | 1 |
| Controlled Low Strength Material | m ³ | 6.1 |

- Notes:
- Work this Sheet with Sheet No. 25 of 29.
 - All dimensions are in millimeters (mm) except as noted.
 - Backfill shall be CA-6 compacted to the satisfaction of the engineer. The excavated material shall be disposed of as directed by the engineer. All cost shall be included with Structure Excavation.

ILLINOIS DEPARTMENT OF TRANSPORTATION
I-94 EAST BOUND / IL 394 SOUTH BOUND
PIER SECTION & DETAILS
SB ILLINOIS ROUTE 394 OVER INTERSTATE 80
F.A.P. 332 SECTION (0203.1 & 0312-708W) R-3
COOK COUNTY
STA. 440+193.335 STRUCTURE NO. 016-2796
DATE 07/18/05
SCALE ---



J:\Benchmarks\EA\34562\CADD\1\SN_2796\CD\CTR_19_2796\cat\90024s_2796.dgn
 016-JUL-2005 13:56