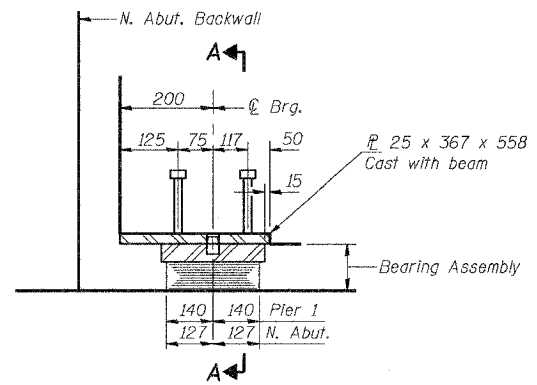
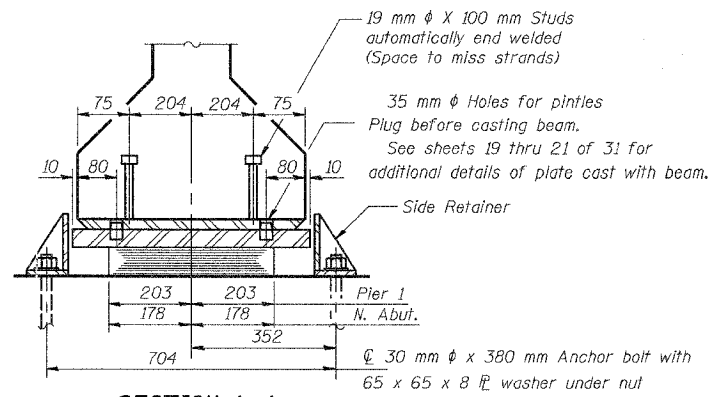


STATE OF ILLINOIS
DEPARTMENT OF TRANSPORTATION

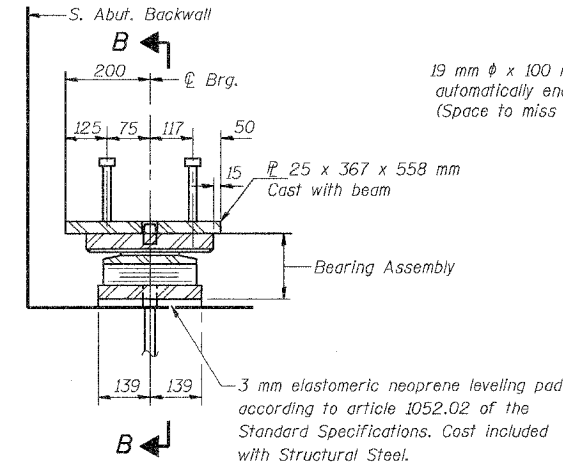
ROUTE NO.	SECTION	COUNTY	TOTAL SHEETS	SHEET NO.	SHEET NO. 22 37 SHEETS
F.A.I. 80/94		COOK	870	495	
FED. ROAD DIST. NO. 1 ILLINOIS FED. AID PROJECT- SECTION (0203.1 & 0312-708W) R-3 CONTRACT # 62108					



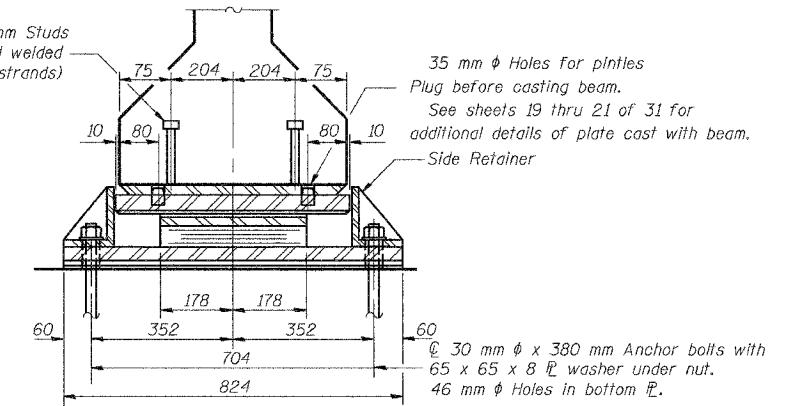
SECTION AT N. ABUT.
PIER 1 SIMILAR



SECTION A-A

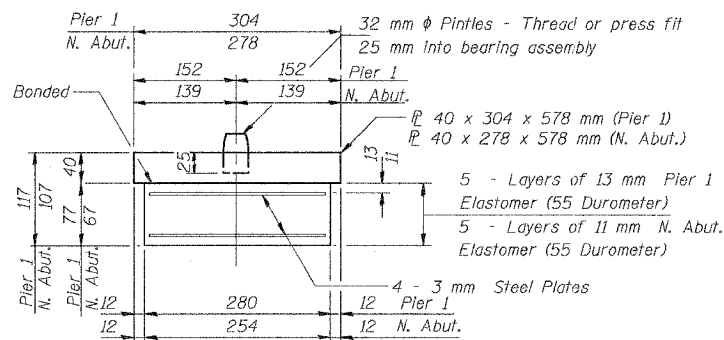


SECTION AT S. ABUT.



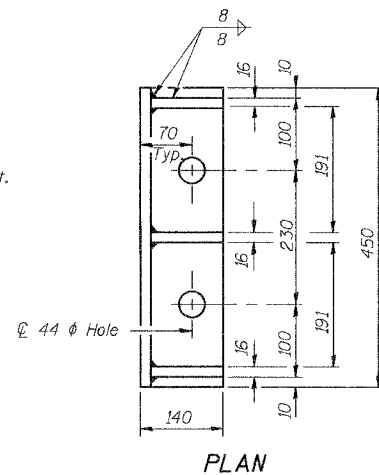
SECTION B-B

TYPE I ELASTOMERIC EXP. BRG.

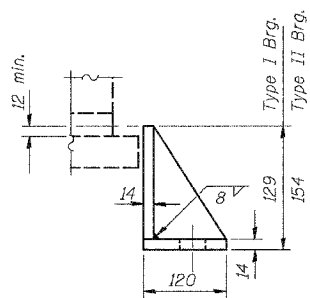


TYPE I - BEARING ASSEMBLY

Note: Shim plates shall not be placed under Bearing Assembly.



PLAN



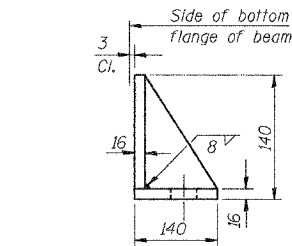
SIDE RETAINER

Equivalent rolled angle with stiffeners will be allowed in lieu of welded plates.

Notes:

- After beams have been erected holes at expansion bearings shall be drilled and anchor bolts grouted in place.
- See sheet No. 23 of 37 for anchor bolt installation.
- All dimensions are in millimeters (mm) except as noted.

DESIGNED	M.R./ H.T.
CHECKED	H.T.
DRAWN	J.B./ J.S.
CHECKED	H.T./ M.R.



ELEVATION

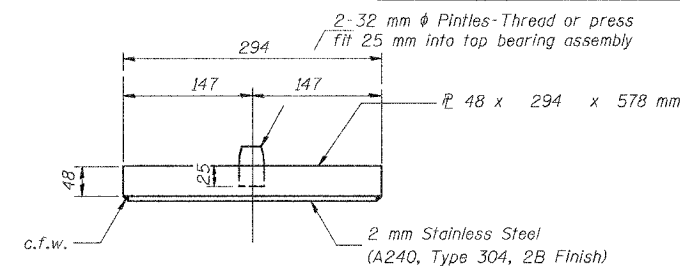
SIDE RETAINER AT FIXED PIER

Equivalent rolled angle with stiffeners will be allowed in lieu of welded plates. The side retainers shall be galvanized after shop fabrication according to AASHTO M111 & ASTM 385.

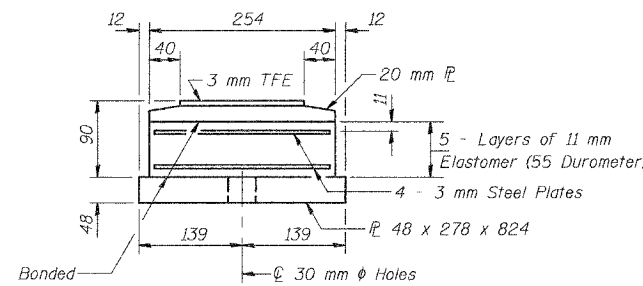
BILL OF MATERIAL

Item	Unit	Total
Elastomeric Bearing Assembly, Type I	Each	24
Elastomeric Bearing Assembly, Type II	Each	8

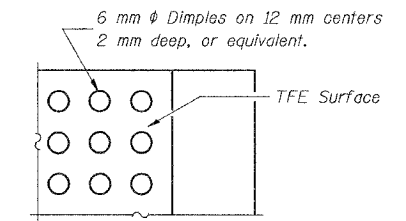
TYPE II TFE ELASTOMERIC EXP. BRG.



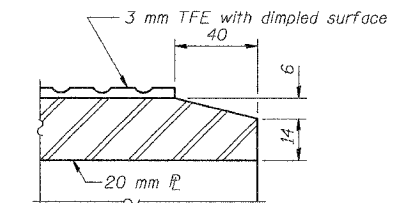
TYPE II - TOP BEARING ASSEMBLY



TYPE II - BOTTOM BEARING ASSEMBLY



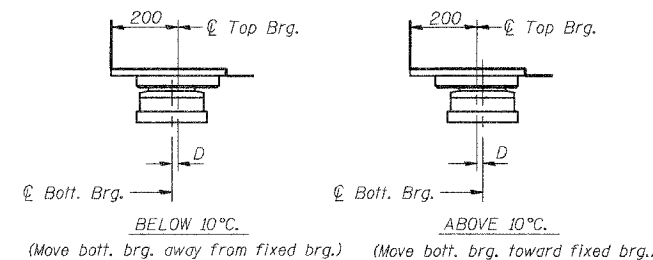
TYPE II BRG. - PLAN-TFE SURFACE



TYPE II BRG. - SECTION THRU TFE

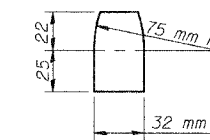
Note: The 3 mm TFE sheet shall be bonded directly to the top steel plate with a two-component, medium viscosity epoxy resin, conforming to the requirements of the Federal Specification MMM-A-134, Type I. The bond agent shall be applied on the full area of the contact surfaces.

Bonding of 3 mm TFE sheet during vulcanizing process will be permitted provided the process and method of adjusting assembly height is approved by the Engineer.



TYPE II EXP. BRG. - SETTING ANCHOR BOLTS

D=1 mm per each 10 m of expansion for every 8°C temp. change from the normal temp. of 10°C.



PINTLE

ILLINOIS DEPARTMENT OF TRANSPORTATION
I-94/IL 394 SOUTH BOUND
ELASTOMERIC EXPANSION BEARINGS
SB IL, ROUTE 394 OVER CANADIAN NATIONAL RR
F.A.P. 332 SECTION (0203.1 & 0312-708W) R-3
COOK COUNTY
STA. 39+752.246 S.N. 016-2798 (INSIDE LANES)
DATE: July 18, 2005
SCALE: NONE
Soodan
Soodan & Associates, Inc.
100 North LaSalle Street, Suite 1800
Chicago, Illinois 60602