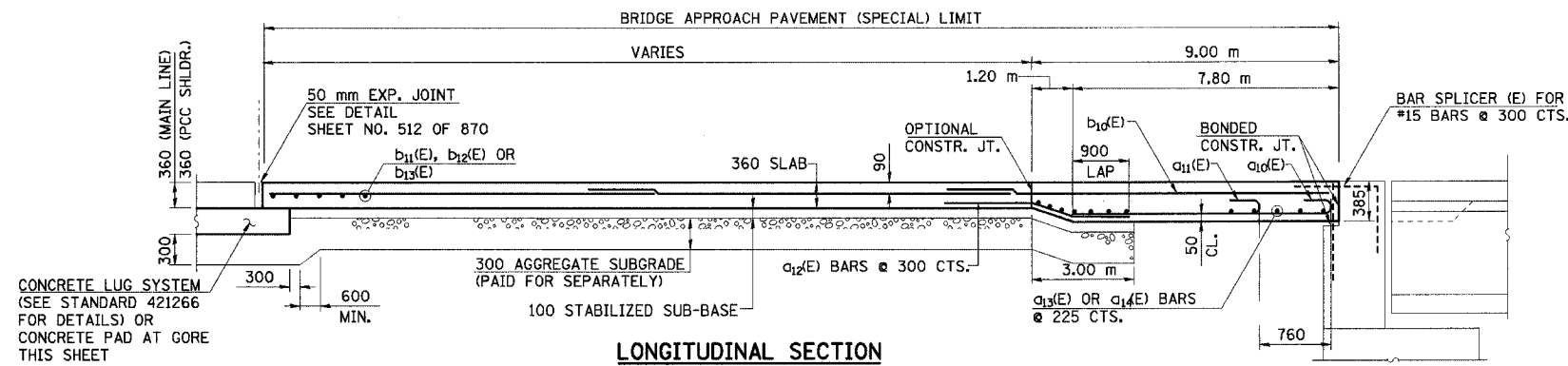
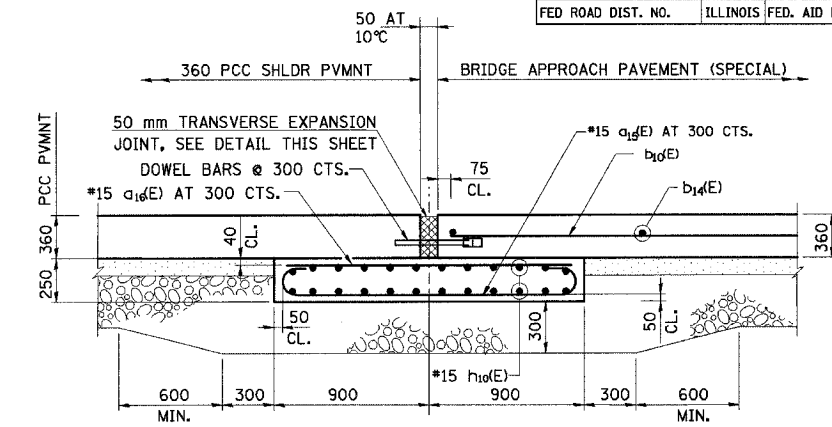


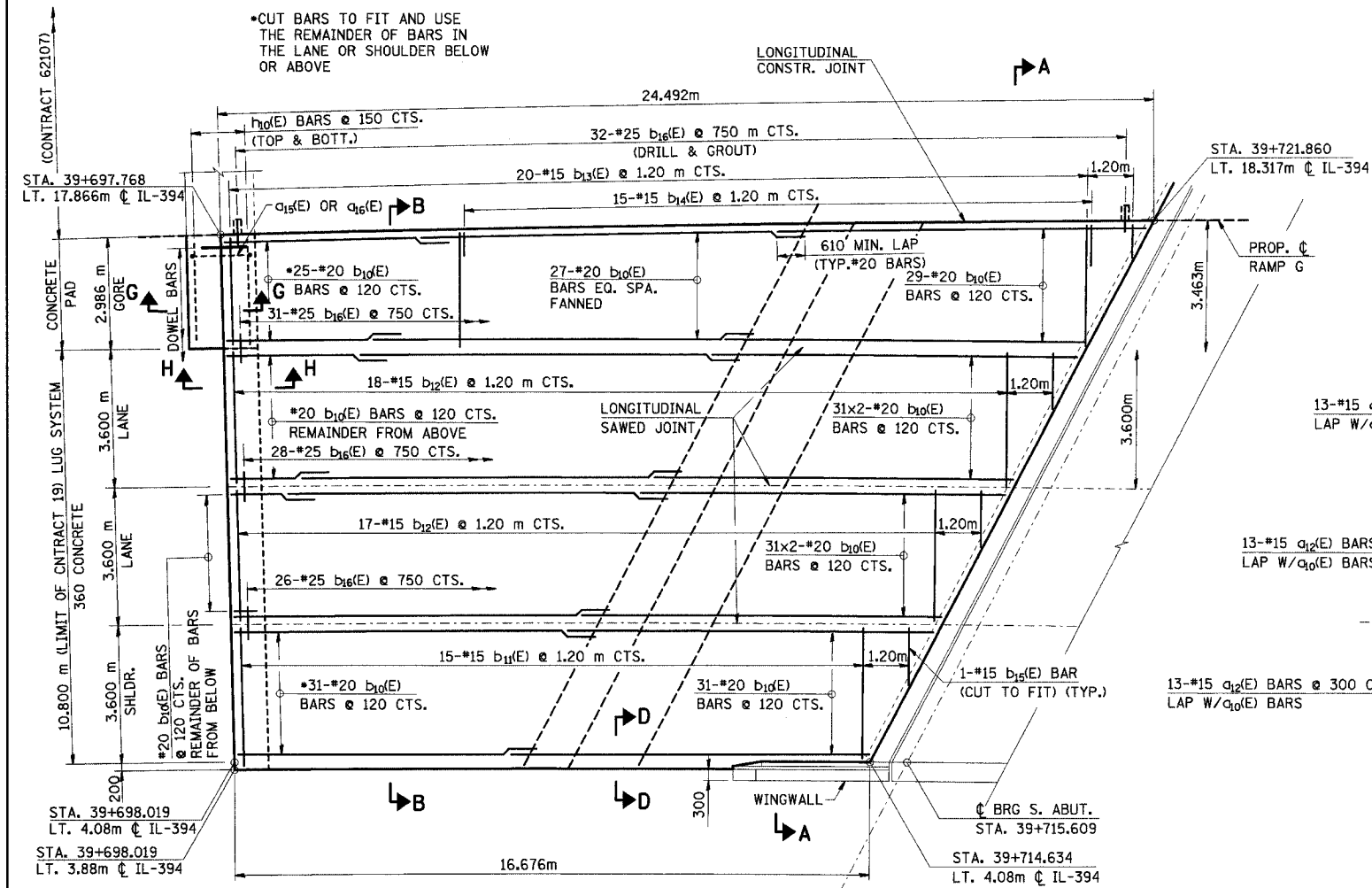
FAI RTE	SECTION	COUNTY	TOTAL SHEETS NO.	SHEET NO.
80/94		COOK	870	511
STA.	TO STA.			
FED ROAD DIST. NO.	ILLINOIS FED. AID PROJECT			



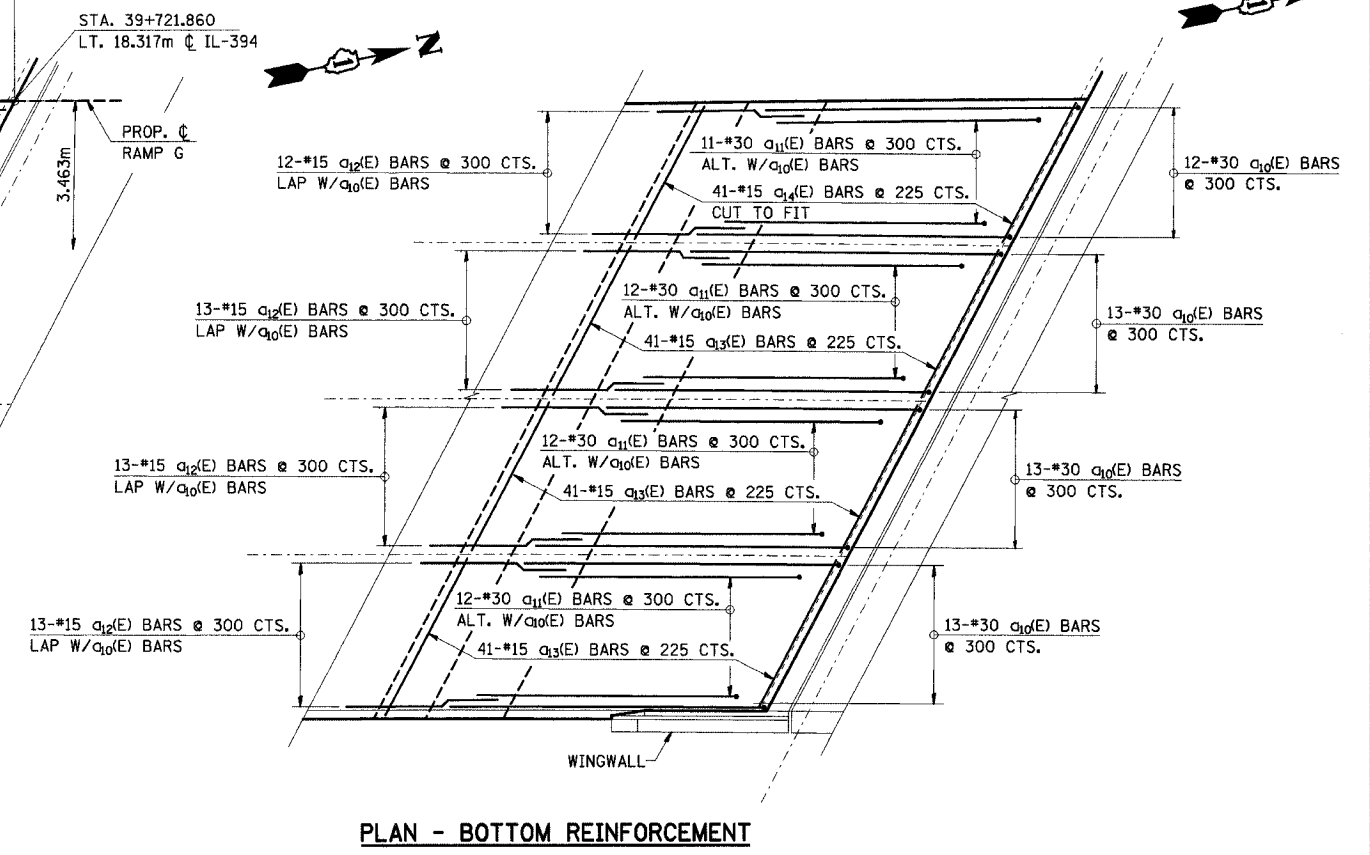
**LONGITUDINAL SECTION**



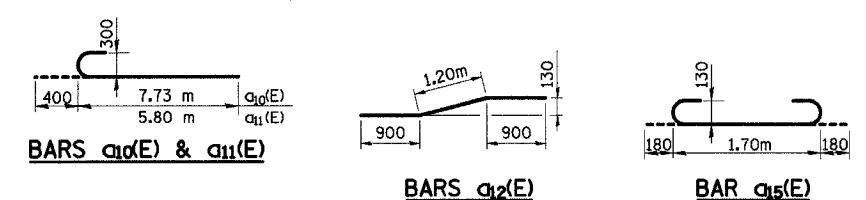
**SECTION G-G**



**PLAN - TOP REINFORCEMENT**



**PLAN - BOTTOM REINFORCEMENT**



**NOTES:**

1. WORK THIS SHEET WITH SHEET NO. 512 OF 870.
2. BARS INDICATED THUS "31x2-\*20 ETC." INDICATE 31 LINES OF BARS WITH 2 LENGTHS PER LINE.
3. REINFORCEMENT BARS DESIGNATED "(E)" SHALL BE EPOXY COATED.
4. ALL DIMENSIONS ARE IN MILLIMETERS (mm) EXCEPT AS NOTED.
5. DRILL AND GROUTING b16(E) BARS SHALL BE IN ACCORDANCE WITH SECTION 584. COST OF DRILLING AND GROUTING OF THE STANDARD SPECIFICATIONS IS INCLUDED FOR PAYMENT UNDER REINFORCEMENT BARS, EPOXY COATED.

REVISIONS	
NAME	DATE

ILLINOIS DEPARTMENT OF TRANSPORTATION  
 I-94 EAST BOUND / IL 394 SOUTH BOUND  
**BRIDGE APPROACH PAVEMENT (SPECIAL)**  
 SB IL ROUTE 394 OVER  
 CANADIAN NATIONAL RR  
 STRUCTURE NO. 016-2798  
 SOUTH APPROACH - 1 OF 2

HORIZ SCALE:  
 VERT SCALE:  
 DATE: JUL 18, 2005  
 DRAWN BY: LK  
 CHECKED BY: PY

**HNTB**