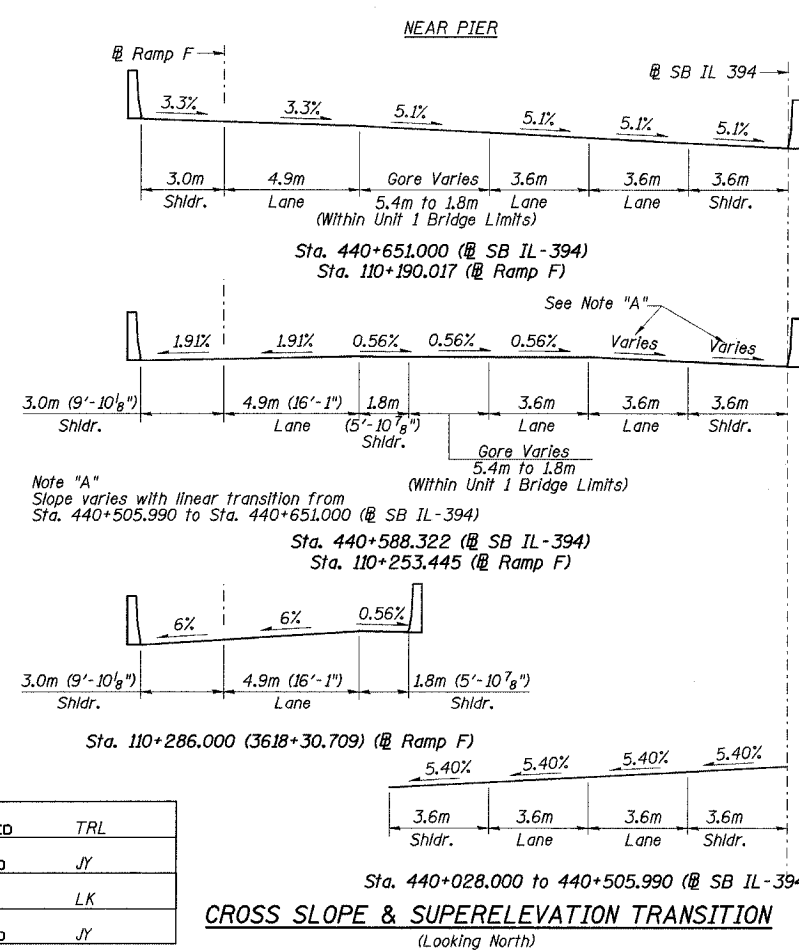
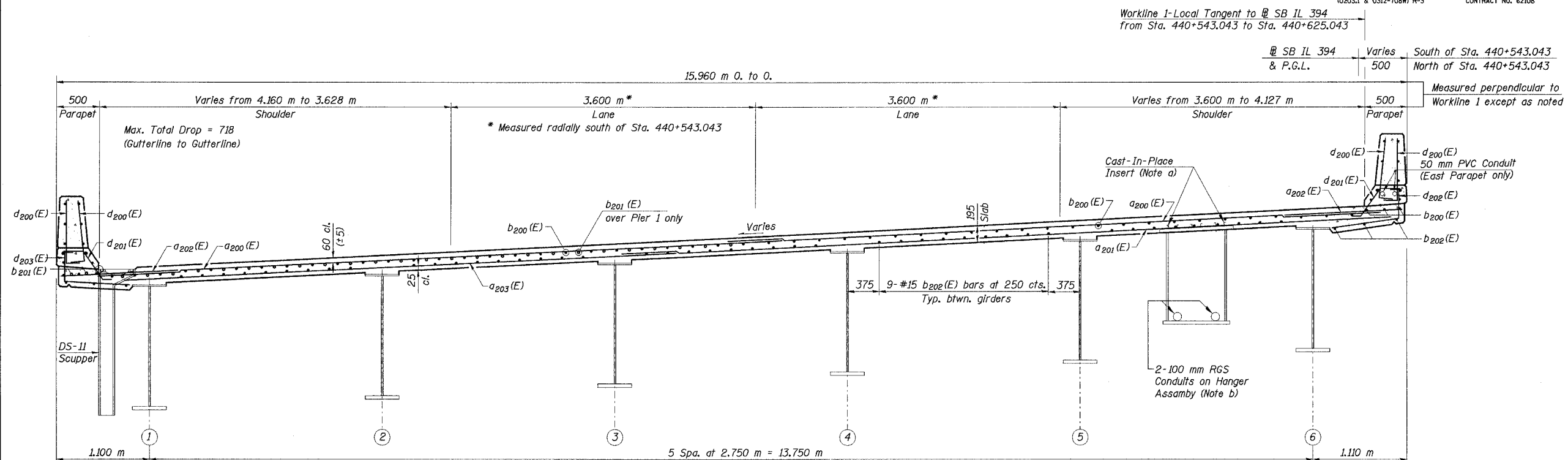
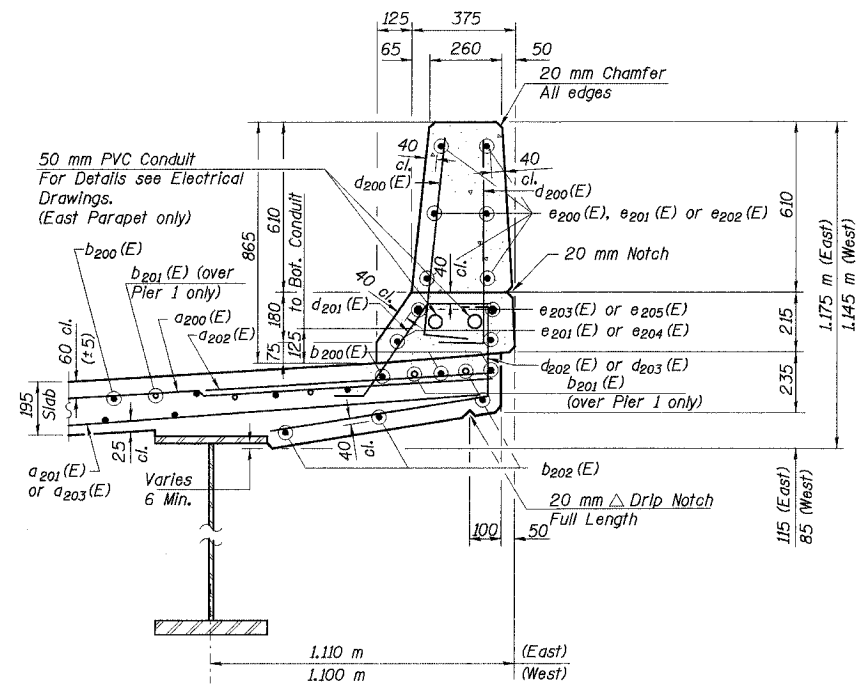


STATE OF ILLINOIS
DEPARTMENT OF TRANSPORTATION

ROUTE NO.	SECTION	COUNTY	TOTAL SHEETS	SHEET NO.	SHEET NO. 24
F. A. I. 80/94		COOK	870	538	91 SHEETS
FED. ROAD DIST. NO. 1	ILLINOIS FED. AID PROJECT-				
(0203.1 & 0312-708W) R-3		CONTRACT NO. 62108			



CROSS SECTION - UNIT 2
(Looking Up Station along SB IL 394)



SECTION THRU PARAPET
(East Parapet Shown)
(West Parapet Opposite Hand)

Note: The minimum clearance between the bottom of the conduit and the top of the hook of the d200(E) bar shall be 40mm.

Note a: See Electrical Drawings for location and type. Paid under Electrical Contract but Installed by Bridge Contractor. Installation included for payment under Concrete Superstructure. Bridge Contractor to coordinate with Electrical Contractor.
Note b: Elements paid and installed under Electrical Contract.

- Notes:
1. Work this Sheet with Sheets Nos. 23, 25 and 30 of 91.
 2. See Sht. No. 31 of 91 for drainage scupper.
 3. All dimension are in millimeters (mm) except as noted.
 4. Reinforcement bars designated (E) shall be epoxy coated.

L:\kates\34562\CADD\B1\SN_2800\cadd\CTR_19_2800\cadd\190224_e_2800.dgn 18-AUG-2005 12:46

DESIGNED	TRL
CHECKED	JY
DRAWN	LK
CHECKED	JY

ILLINOIS DEPARTMENT OF TRANSPORTATION
I-94 EAST BOUND / IL 394 SOUTH BOUND
DECK CROSS SECTION & DETAILS
SPANS 1 & 2 - UNIT 2
SB IL ROUTE 394 OVER THORN CREEK
F.A.P. 332 SECTION (0203.1 & 0312-708W) R-3
COOK COUNTY
STA. 440+704.350 STRUCTURE NO. 016-2800
DATE JUL 18, 2005
SCALE ---
HNTB