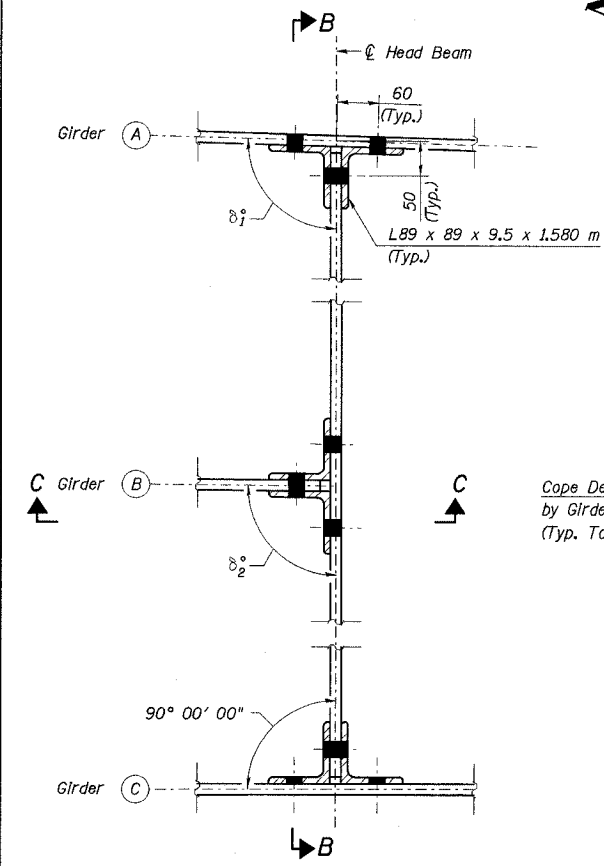


STATE OF ILLINOIS  
DEPARTMENT OF TRANSPORTATION

ROUTE NO.	SECTION	COUNTY	TOTAL SHEETS	SHEET NO.	SHEET NO. 43
F. A. I. 80/94		COOK	870	557	91 SHEETS
FED. ROAD DIST. NO. 1		ILLINOIS FED. AID PROJECT-			
(02033.1 & 0312-708W) R-3		CONTRACT NO. 62108			

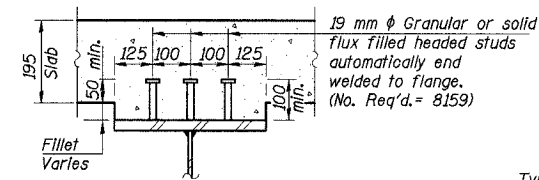


DETAIL A

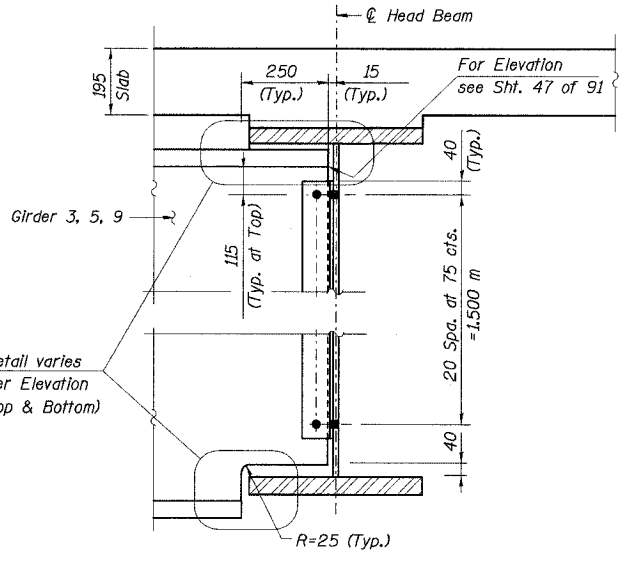
ANGLE BETWEEN HEAD BEAM AND GIRDERS

A-B-C	$\delta_1^\circ$	$\delta_2^\circ$
2-3-4	91° 37' 21"	90° 32' 54"
4-5-6	94° 01' 54"	92° 06' 06"
8-9-10	91° 38' 22"	90° 37' 36"

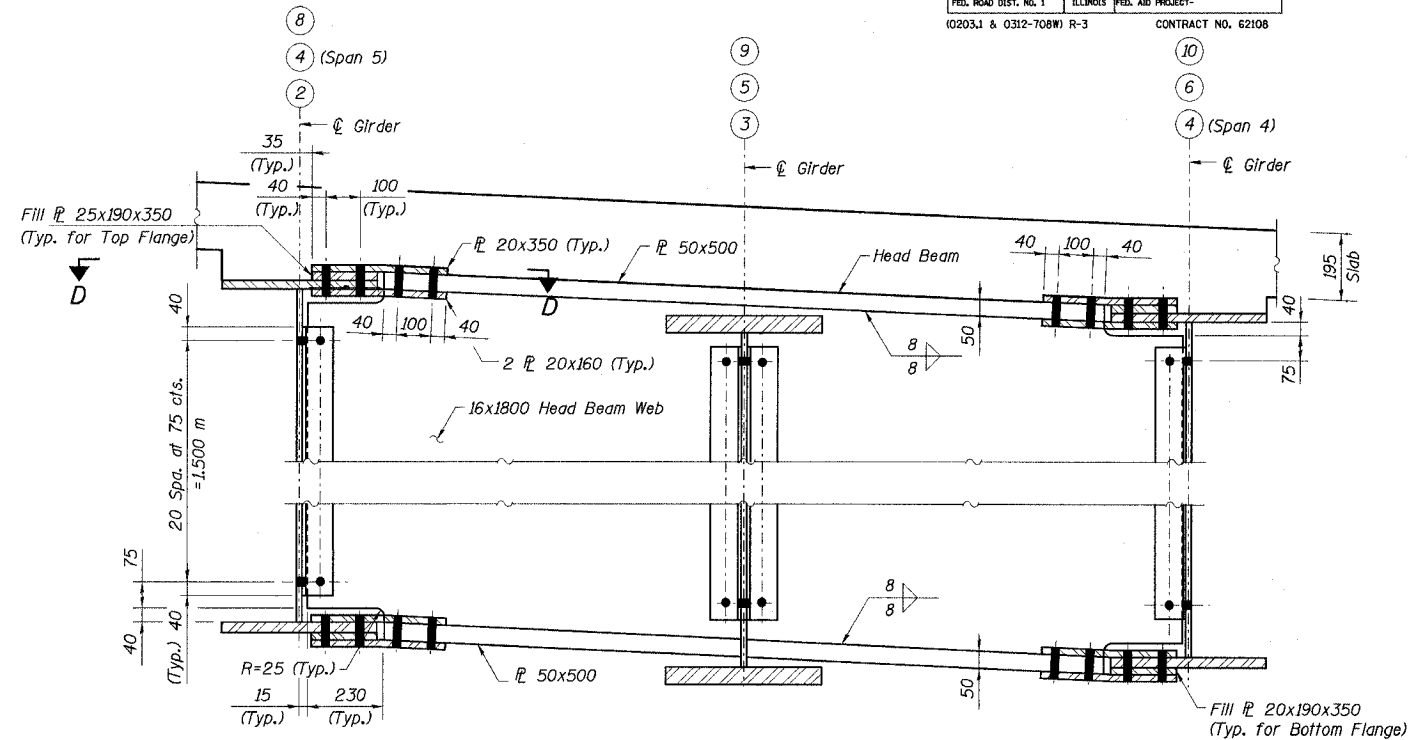
Angles shown in the table are between  $\bar{C}$  Head Beam and Girder Tangent Line at Intersection of  $\bar{C}$  Girder and  $\bar{C}$  Head Beam.



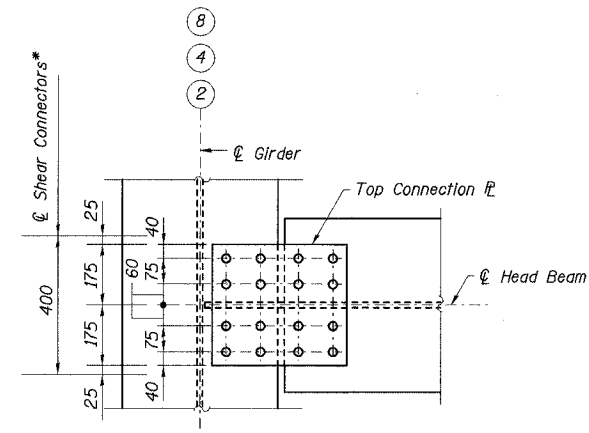
SECTION A-A



SECTION C-C



SECTION B-B

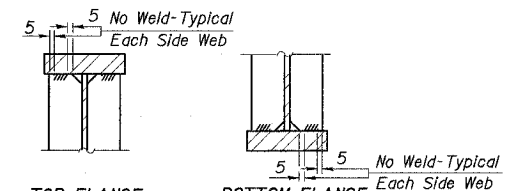


SECTION D-D

\*Adjust Shear Connector Spacing to miss Top Connection Plate.

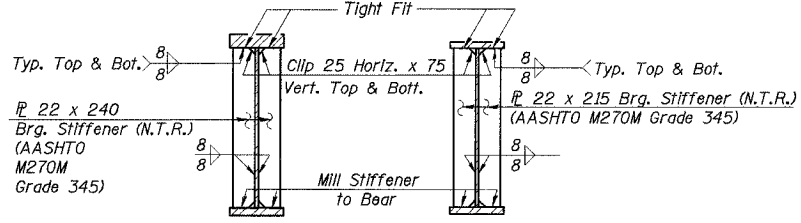
Notes:

- All dimensions are in millimeters (mm) except as noted.
- All Head Beam Connections to have 28 mm  $\phi$  oversized holes for M22 H.S. Bolts. Two hardened washers shall be required over each oversized hole.
- All Head Beams and Connection Angles to be AASHTO M270M, Grade 345 and meet N.T.R.
- N.T.R. denotes plates to which notch toughness requirements are applicable.
- Work this sheet with Sheets Nos. 37 - 42 & 45 of 91.



TOP FLANGE BOTTOM FLANGE  
STIFFENER TO FLANGE WELD

Typical for Bearing Stiffeners



AT PIER 3 & 4 AT N. ABUT. & Pier 2

BEARING STIFFENERS

DESIGNED	JY
CHECKED	MEA
DRAWN	LK
CHECKED	MEA

L:\Kaitis\JA\4862\CADD\BNSN\_2800\Cadd\CTR\_19\_2800\Fp190194.e\_2800.dgn 19-AUG-2005 08:14

ILLINOIS DEPARTMENT OF TRANSPORTATION  
I-94 EAST BOUND / IL 394 SOUTH BOUND  
CONNECTION DETAILS - 1  
SPANS 3-5 - UNIT 1  
SB IL ROUTE 394 OVER THORN CREEK  
F.A.P. 332 SECTION (02033.1 & 0312-708W) R-3  
COOK COUNTY  
STA. 440+704.350 STRUCTURE NO. 016-2800  
DATE JUL 18, 2005  
SCALE ---  
**HNTB**