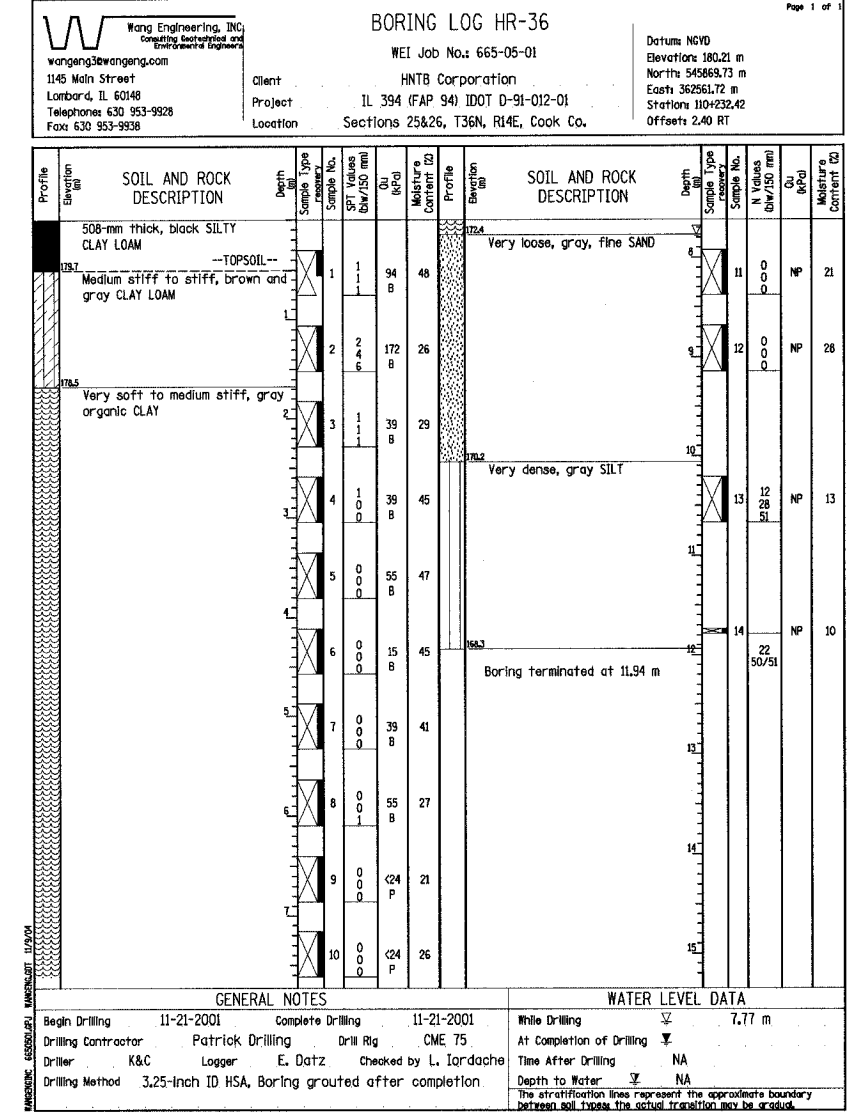
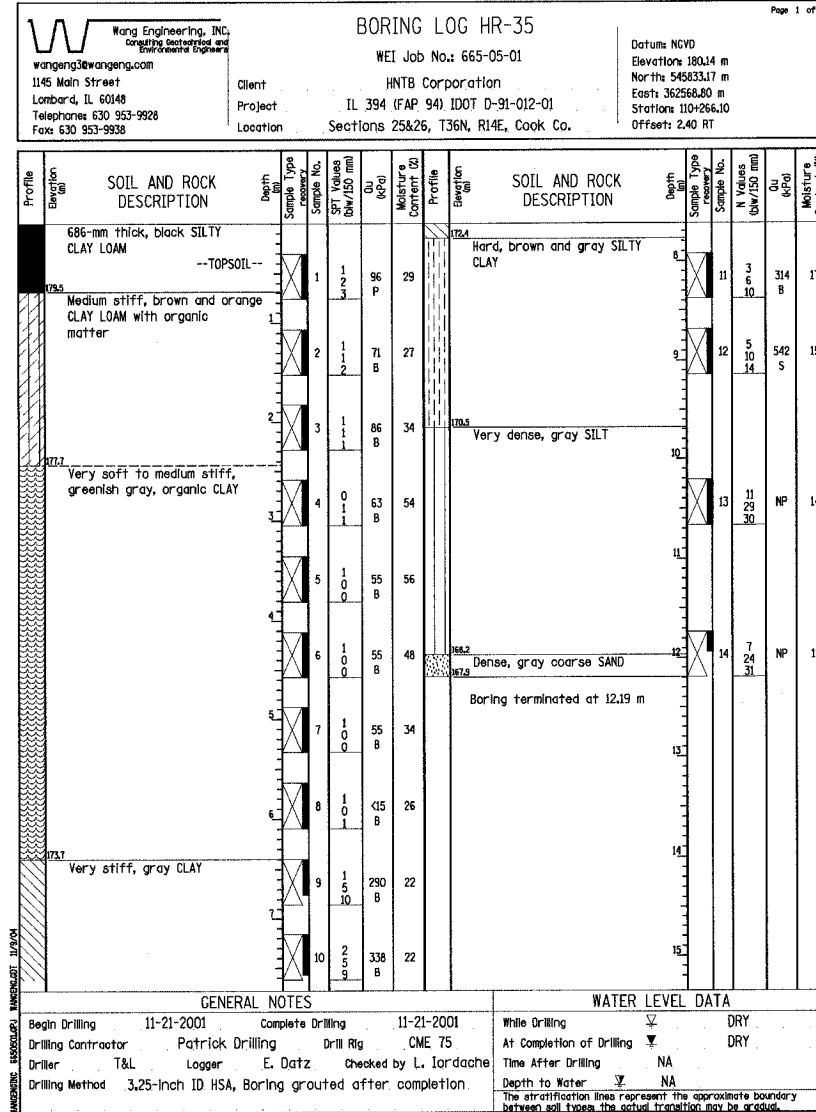
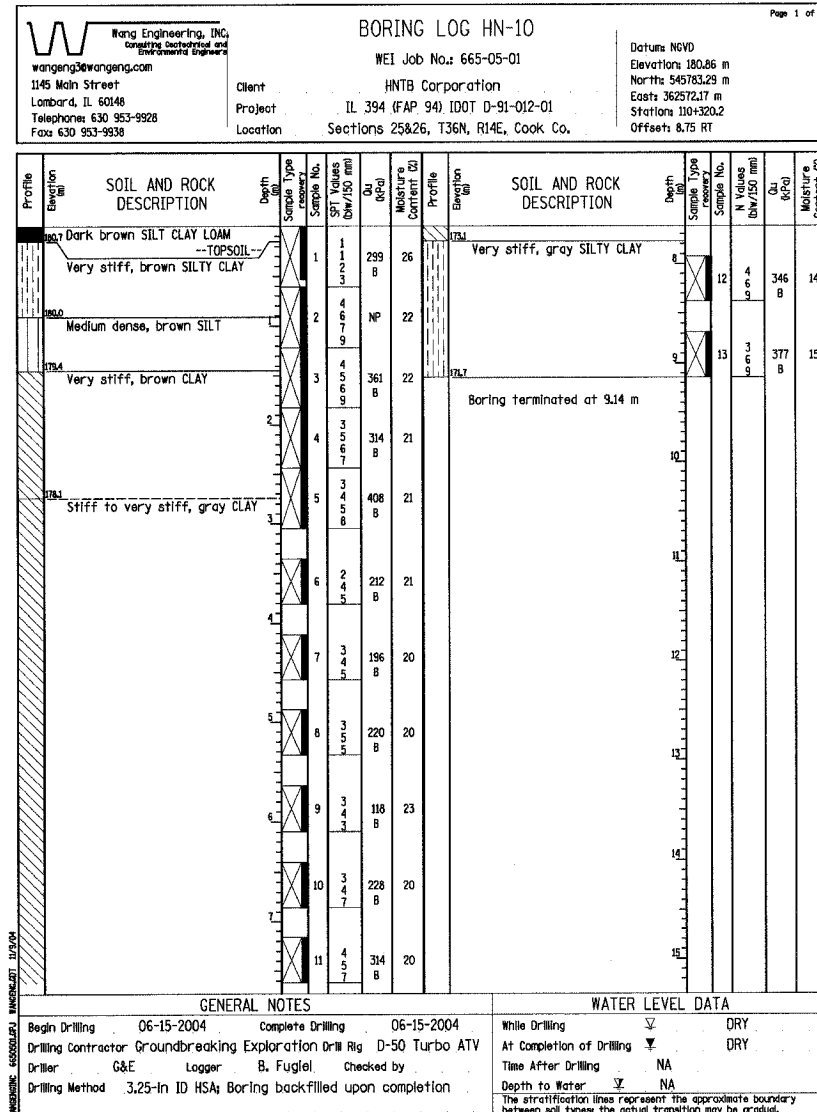


STATE OF ILLINOIS
DEPARTMENT OF TRANSPORTATION

ROUTE NO.	SECTION	COUNTY	TOTAL SHEETS	SHEET NO.
F. A. I-80/94		COOK	870	603
FED. ROAD DIST. NO. 1		ILLINOIS	CONTRACT NO. 62108	
				SHEET NO. 89
				91 SHEETS



J:\Beauchamp\3134562\CADD\151\SN_2800\cadd\CTR_19_2800\cadd\190814e_2800.dgn
08-JUL-2005 14:46

DESIGNED	PCA
CHECKED	MEA
DRAWN	LK
CHECKED	MEA

ILLINOIS DEPARTMENT OF TRANSPORTATION
I-94 EAST BOUND / IL 394 SOUTH BOUND
SOIL BORING LOGS
HN-10, HR-35 & HR-36
SB IL ROUTE 394 / RAMP F OVER THORN CREEK
F.A.P. 332 SECTION (0203.1 & 0312-708W) R-3
COOK COUNTY
STA. 440+704.350 STRUCTURE NO. 016-2800/2845
DATE JUL 18, 2005
SCALE ---
HNTB