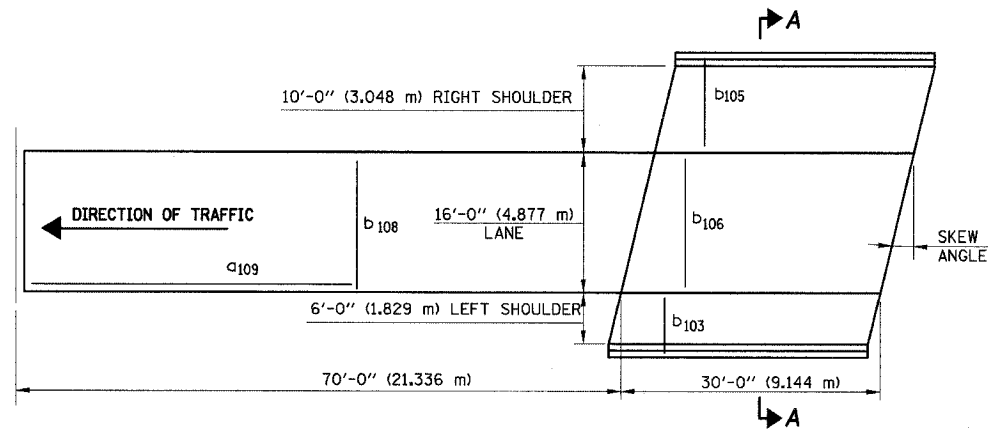
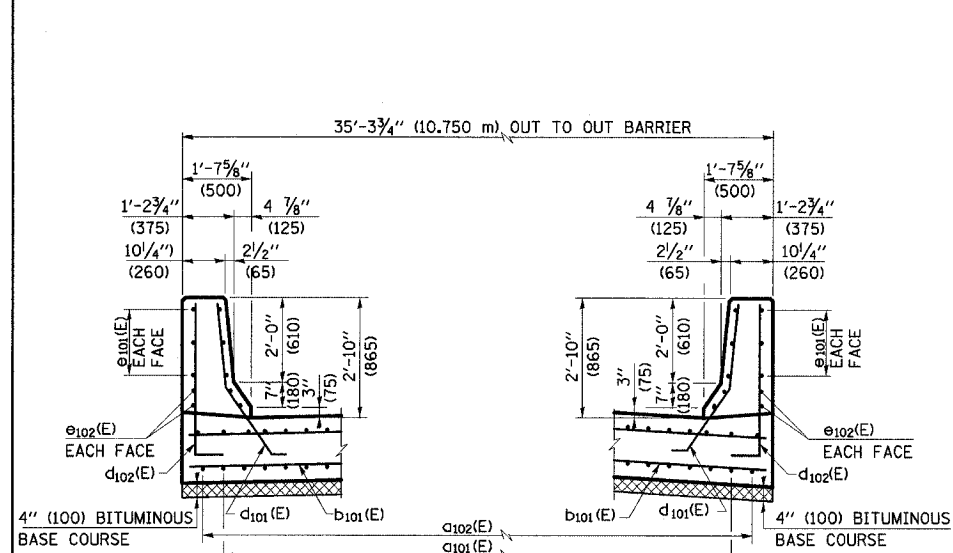


FAY RTE	SECTION	COUNTY	TOTAL SHEETS NO.	SHEET NO.
80/94	*	COOK	870	610
STA.		TO STA.		
FED ROAD DIST. NO.		ILLINOIS FED. AID PROJECT		

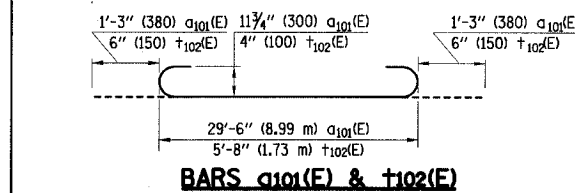


APPROACH SLAB PLAN, AHEAD LEFT SKEW, LEAVING BRIDGE

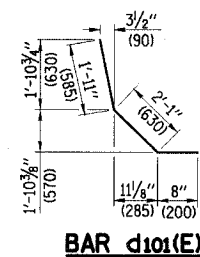


SECTION A-A*

* FOR OTHER DETAILS NOT SHOWN IN THIS SECTION, SEE ISTHA STANDARD 04-14, SHEET 2 OF 5



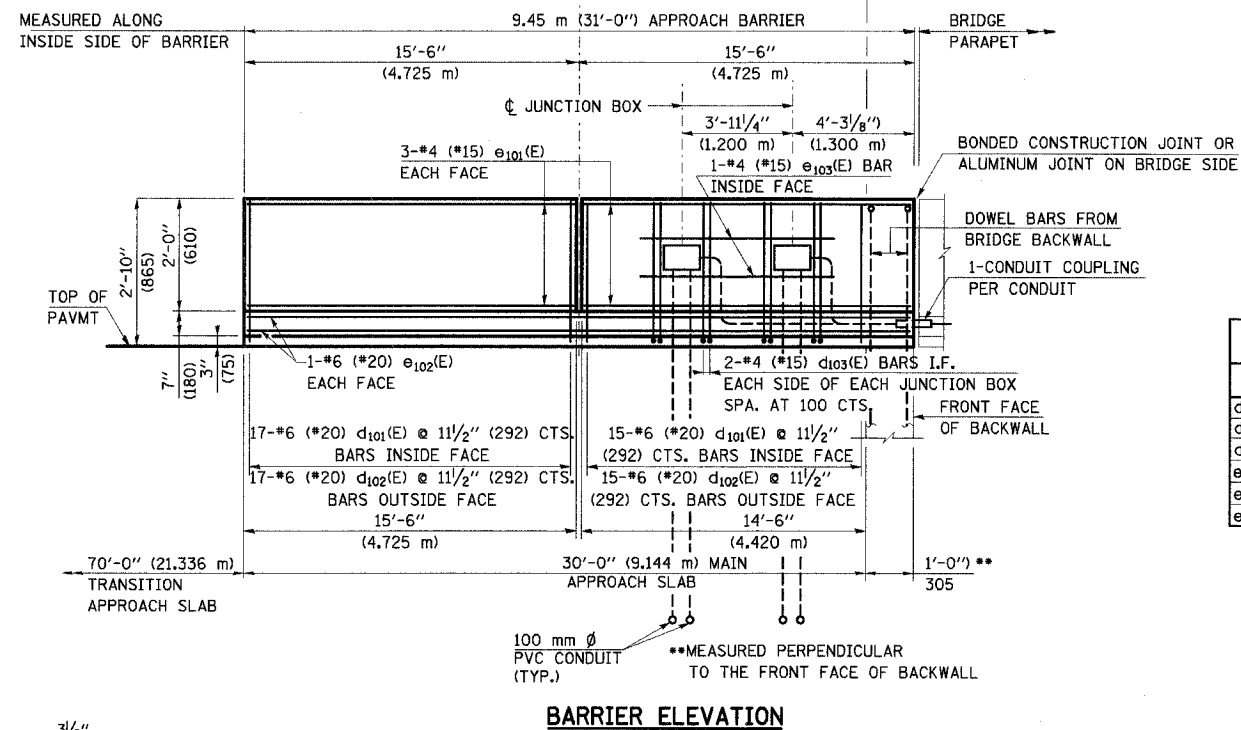
BAR c103(E)



BAR d102(E)

BAR d103(E)

BARS t103(E) & t104(E)



BARRIER ELEVATION

REINFORCING BAR SCHEDULE FOR APPROACH SLABS

BAR	SIZE	SHAPE	0° SKEW	
			NO.	LENGTH
c101(E)	9 (#30)	U	35	32'-0" (9.754 m)
c102(E)	9 (#30)	U	35	25'-6" (7.772 m)
c103(E)	6 (#20)	U	19	10'-8" (3.251 m)
c104(E)	4 (#15)	U	60	29'-6" (8.992 m)
c109(E)	4 (#15)	U	56	36'-8" (11.176 m)
b101(E)	5 (#15)	U	40	34'-10" (10.617 m)
b102(E)	5 (#15)	U	9	15'-8" (4.775 m)
b103(E)	4 (#15)	U	9	7'-3" (2.210 m)
b105(E)	4 (#15)	U	9	11'-3" (3.429 m)
b106(E)	4 (#15)	U	9	15'-8" (4.775 m)
b108(E)	4 (#15)	U	19	15'-8" (4.775 m)
b110(E)	5 (#15)	U	0	-
b111(E)	5 (#15)	U	0	-
b113(E)	5 (#15)	U	0	-
BRIDGE APPR. SLAB (SQ. M.)			206.1	
REINF. STL., EPOXY CTD. (KG.)			6,367	
t101(E)	4 (#15)	U	51	5'-8" (1.727 m)
t102(E)	4 (#15)	U	51	6'-8" (2.032 m)
t103(E)	4 (#15)	U	8	11'-7" (3.531 m)
t104(E)	4 (#15)	U	0	-
w101(E)	5 (#15)	U	24	35'-10" (10.922 m)
w102(E)	5 (#15)	U	24	16'-8" (5.08 m)
APPR. SLAB GRADE BEAMS CLASS P CONCRETE (C. M)			9.0	
REIN. STL., EPOXY CTD. (KG.)			949	

REINFORCING BAR SCHEDULE FOR BARRIERS

BAR	NO.	SIZE	LENGTH	SHAPE
d101(E)	64	6 (#20)	4'-8" (1.422 m)	U
d102(E)	64	4 (#15)	4'-10" (1.473 m)	L
d103(E)	8	4 (#15)	3'-2" (0.965 m)	L
e101(E)	24	4 (#15)	15'-2" (4.623 m)	U
e102(E)	8	6 (#20)	30'-6" (9.296 m)	U
e103(E)	2	4 (#15)	7'-10 1/2" (2.400 m)	U

BILL OF MATERIAL FOR BARRIERS

PAY ITEM NO.	DESCRIPTION	UNIT	QUANTITY
501F	CONCRETE FOR BRIDGES & DRAIN STRUCTURES (CLASS SD)	CU. M.	6.0
504B	REINFORCING STEEL, EPOXY COATED	KG	731
524	APPLY CONCRETE SEALANT	SQ. M.	22

NOTE: THE LEGEND SHOWN IN ISTHA STANDARD ST 04-14, SHT 3 OF 5 SHALL BE REPLACED BY LEGEND IN THIS SHEET.

LEGEND:

- BITUMINOUS BASE COURSE
- POROUS GRANULAR BACKFILL
- CA-6 AGGREGATE

NOTES:

1. WORK THIS SHEET WITH ISTHA STANDARD ST 04-14.
2. THE APPROACH SLAB SHALL BE CONSTRUCTED IN ACCORDANCE WITH ISTHA STANDARD ST 04-14 EXCEPT AS OTHERWISE SHOWN ON THIS DRAWING.
3. THE 4" GRANULAR SUB-BASE SHOWN IN ISTHA STANDARD ST 04-14 SHALL BE REPLACED WITH 4" BITUMINOUS BASE COURSE AND SHALL BE CONSTRUCTED AND PAID FOR IN ACCORDANCE WITH SECTION 304 OF THE STANDARD SPECIFICATIONS.
4. THE 8" SELECTED SUBGRADE SHOWN IN ISTHA STANDARD 04-14 SHALL BE REPLACED WITH AGGREGATE SUBGRADE. AGGREGATE SUBGRADE INCLUDES 9" POROUS GRANULAR BACKFILL CAPPED WITH 3" OF CA-6 AGGREGATE.
5. THE AGGREGATE SUBGRADE SHALL COMPLY WITH SPECIAL PROVISIONS S.P.211A (AGGREGATE SUBGRADE, 12 IN.).

6. THE APPROACH SLAB AND GRADE BEAM CONCRETE SHALL BE ISTHA CLASS P AND SHALL BE CONSTRUCTED AND PAID FOR IN ACCORDANCE WITH SECTION 526 OF THE STANDARD SPECIFICATIONS AND S.P.117 AND SUBSTITUTED WITH AN IDOT CLASS PV MIX THROUGH S.P. 152.
7. THE BARRIER CONCRETE SHALL BE ISTHA CLASS SD AND SHALL BE CONSTRUCTED AND PAID FOR IN ACCORDANCE WITH ISHTA ITEM 501F OF S.P.501 AND SUBSTITUTED WITH IDOT CLASS BD MIX THROUGH SPECIAL PROVISIONS S.P.152.
8. THE REINFORCING BARS SCHEDULES, BILL OF MATERIAL, AND QUANTITIES ARE CALCULATED FOR ONE END OF A BRIDGE.
9. THE AREA OF THE MAIN APPROACH SLAB CALCULATED FOR PAYMENT IS THE PLAN AREA CALCULATED FROM THE WIDTH DIMENSION FROM THE OUTSIDE FACE OF THE BARRIER TO OUTSIDE FACE OF OTHER BARRIER BY THE LENGTH OF 30.00 FEET. THE AREA OF THE TRANSITION APPROACH SLAB CALCULATED FOR PAYMENT IS THE PLAN AREA CALCULATED FROM THE WIDTH DIMENSION FROM LEFT OUTSIDE EDGE OF CONCRETE PAVEMENT TO THE RIGHT OUTSIDE EDGE OF CONCRETE PAVEMENT BY THE MINIMUM LENGTH OF 70.00 FEET PLUS THE ADDITIONAL LENGTH REQUIRED BY THE SKEW ANGLE.
10. ALL DIMENSIONS SHOWN IN PARENTHESIS ARE IN MILLIMETERS - (mm) EXCEPT AS NOTED.

REVISIONS

NAME	DATE

ILLINOIS DEPARTMENT OF TRANSPORTATION
I-94 EAST BOUND / IL 394 SOUTH BOUND

BRIDGE APPROACH SLAB DETAILS
SB IL ROUTE 394 / RAMP F OVER THORN CREEK
F.A.P. 332 SECTION 2004-133F
COOK COUNTY
STA. 440+704.350 STRUCTURE NO. 016-2800/2845

HORIZ SCALE:
VERT SCALE:
DATE: JUL 18, 2005

DRAWN BY: LK
CHECKED BY: PY

HNTB