

STATE OF ILLINOIS
DEPARTMENT OF TRANSPORTATION

ROUTE NO.	SECTION	COUNTY	TOTAL SHEETS	SHEET NO.	SHEET NO. 18
F. A. I. 80/94	.	COOK	870	628	56 SHEETS
FED. ROAD DIST. NO. 1		ILLINOIS FED. AID PROJECT-		CONTRACT NO. 62108	
0203.1 & 0312-708W-R-3					

Joint Size	"C" at 50°F	"D" at 50°F
50	50	40 Min.
65	65	45 Min.
100	75	65 Min.

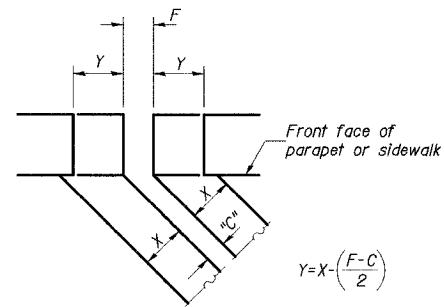
INSTALLATION NOTES

- Install continuous seal in roadway, parapet, curb, and sidewalk.
- Install anchor blocks as indicated.

NOTE A: Maximum spacing of anchor bolts shall be 300 centers.

SKEW LIMITATIONS

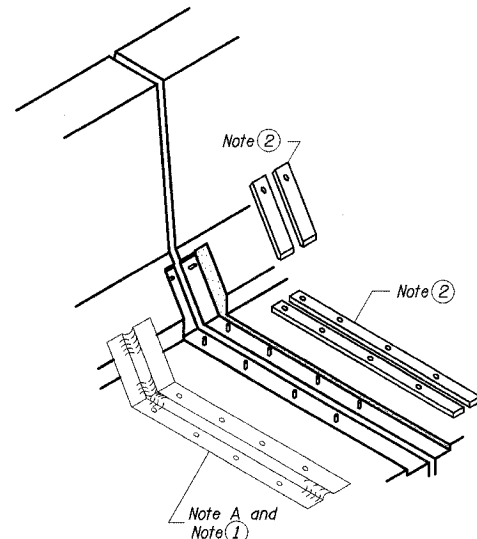
The details of the anchor blocks and the elastomeric membrane in the parapet, as shown, are for up to 50° skews. For skews greater than 50°, the anchor blocks and the elastomeric membrane, installed according to dimension "D", might require modifications to insure a minimum clearance of 40 mm from centerline of anchor studs to edge of parapet opening. The anchor blocks and the elastomeric membrane shall also be installed to the top of the parapet with the anchor studs spaced at ±300 cts.



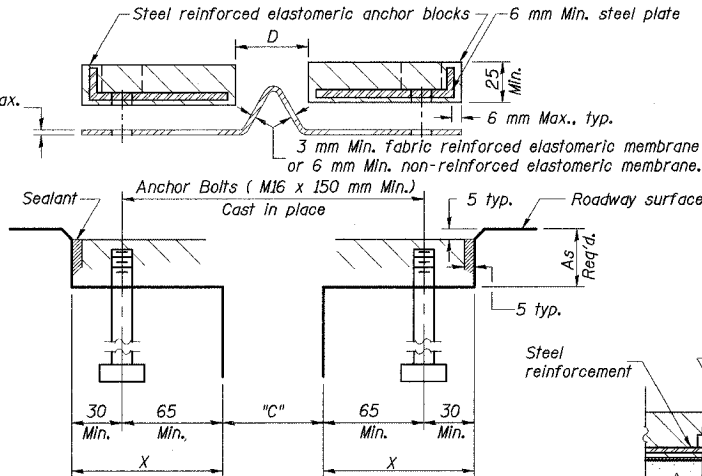
$$Y = X \left(\frac{F-C}{2} \right)$$

For dimension "F" see Sheet 12 of 56

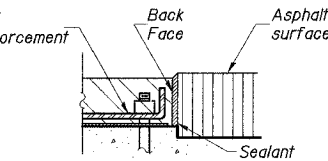
FORMING BLOCKOUT SKETCH



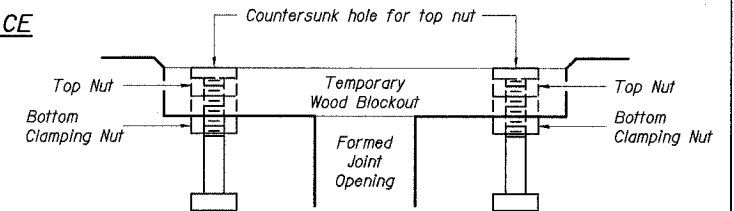
AT PARAPET



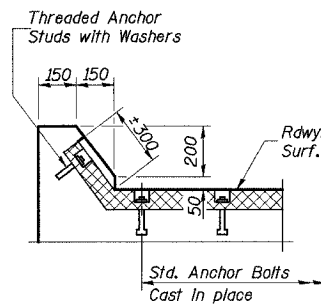
CROSS SECTION



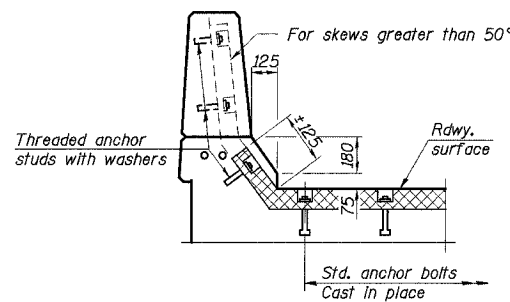
ANCHOR BLOCK WITH ASPHALT SURFACE



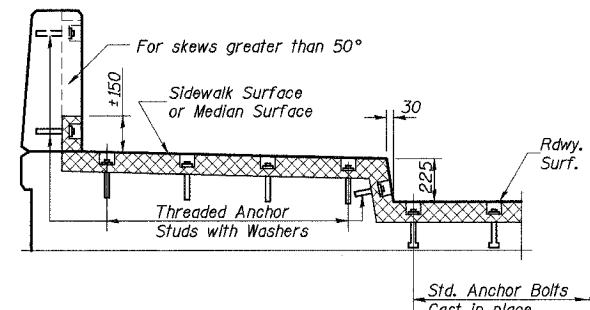
Note: Stud needs to be threaded lower to allow for use of clamping nut.
Anchor studs should be stainless
RECOMMENDED BLOCKOUT DETAIL



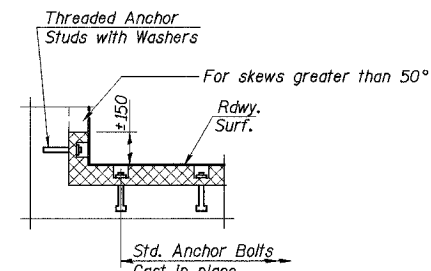
AT CURB



AT PARAPET



AT SIDEWALK OR MEDIAN TYPICAL END TREATMENTS



AT WALL

BILL OF MATERIAL

ITEM	UNIT	QUANTITY
Neoprene Expansion Joint 100 mm	m	15.2

ILLINOIS DEPARTMENT OF TRANSPORTATION
I-94 EAST BOUND / IL 394 SOUTH BOUND
NEOPRENE EXPANSION JOINT
EB I-94 OVER THORN CREEK
F.A.I. 94 SECTION (0203.1 & 0312-708W) R-3
COOK COUNTY
STA. 20+509.000 STRUCTURE NO. 016-2807
DATE JUL 18, 2005
SCALE ---

HNTB

DESIGNED	---
CHECKED	---
DRAWN	LK
CHECKED	PCA

EJ-CS(M) 9-01-03

J:\km\en\34562\CADD\B1\SN_2807\cda\CTR_19_2807\en\90024_2807.dgn
18-AUG-2005 16:25