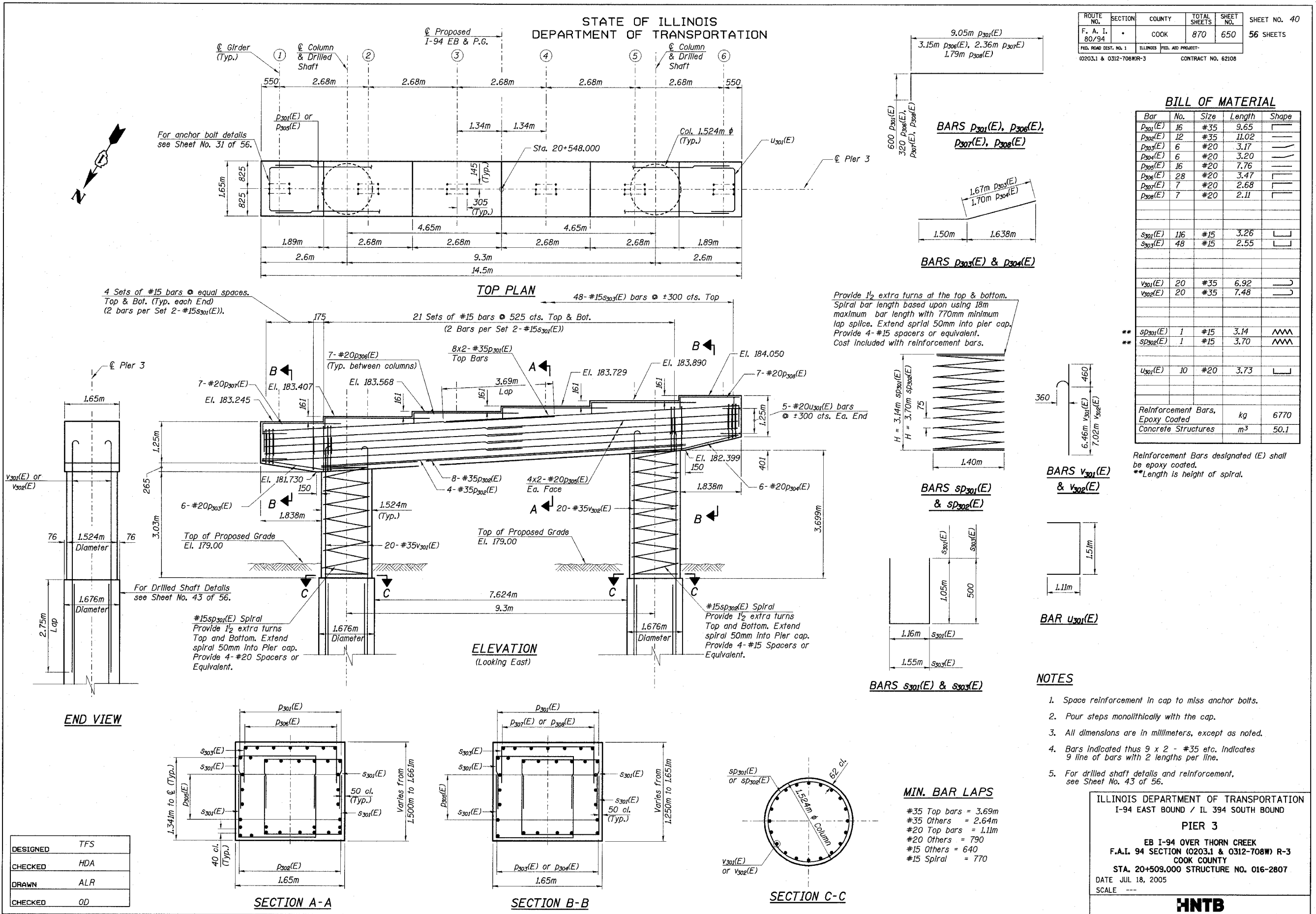


STATE OF ILLINOIS
DEPARTMENT OF TRANSPORTATION

ROUTE NO.	SECTION	COUNTY	TOTAL SHEETS	SHEET NO.	SHEET NO. 40
F. A. I. 80/94	.	COOK	870	650	56 SHEETS
FED. ROAD DIST. NO. 1	ILLINOIS	FED. AID PROJECT-			
0203.1 & 0312-708WR-3		CONTRACT NO. 62108			



BILL OF MATERIAL

Bar	No.	Size	Length	Shape
P ₃₀₁ (E)	16	#35	9.65	—
P ₃₀₂ (E)	12	#35	11.02	—
P ₃₀₃ (E)	6	#20	3.17	—
P ₃₀₄ (E)	6	#20	3.20	—
P ₃₀₅ (E)	16	#20	7.76	—
P ₃₀₆ (E)	28	#20	3.47	—
P ₃₀₇ (E)	7	#20	2.68	—
P ₃₀₈ (E)	7	#20	2.11	—
S ₃₀₁ (E)	116	#15	3.26	—
S ₃₀₂ (E)	48	#15	2.55	—
V ₃₀₁ (E)	20	#35	6.92	—
V ₃₀₂ (E)	20	#35	7.48	—
** S _{D301} (E)	1	#15	3.14	—
** S _{D302} (E)	1	#15	3.70	—
U ₃₀₁ (E)	10	#20	3.73	—
Reinforcement Bars, Epoxy Coated		kg	6770	
Concrete Structures		m ³	50.1	

Reinforcement Bars designated (E) shall be epoxy coated.
**Length is height of spiral.

NOTES

- Space reinforcement in cap to miss anchor bolts.
- Four steps monolithically with the cap.
- All dimensions are in millimeters, except as noted.
- Bars indicated thus 9 x 2 - #35 etc. indicates 9 line of bars with 2 lengths per line.
- For drilled shaft details and reinforcement, see Sheet No. 43 of 56.

ILLINOIS DEPARTMENT OF TRANSPORTATION
I-94 EAST BOUND / ILL 394 SOUTH BOUND
PIER 3
EB I-94 OVER THORN CREEK
F.A.I. 94 SECTION (0203.1 & 0312-708W) R-3
COOK COUNTY
STA. 20+509.000 STRUCTURE NO. 016-2807
DATE JUL 18, 2005
SCALE ---

HNTB

L:\k11121\31552\CADD\B1\SN_2807\ods\CTR_19_2807\pr190234a_2807.dgn
 18-AUG-2005 13:36

DESIGNED	TFS
CHECKED	HDA
DRAWN	ALR
CHECKED	OD