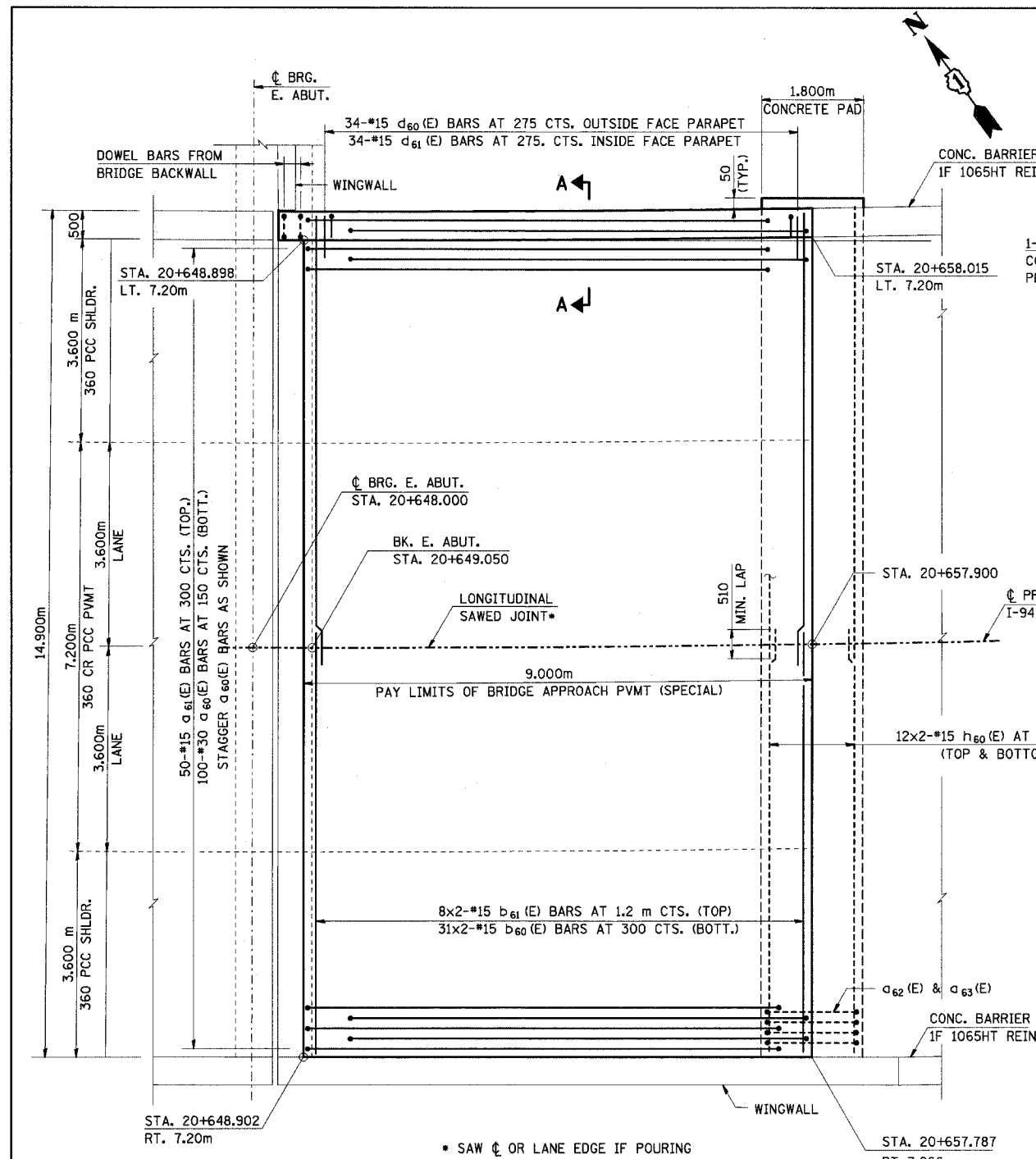
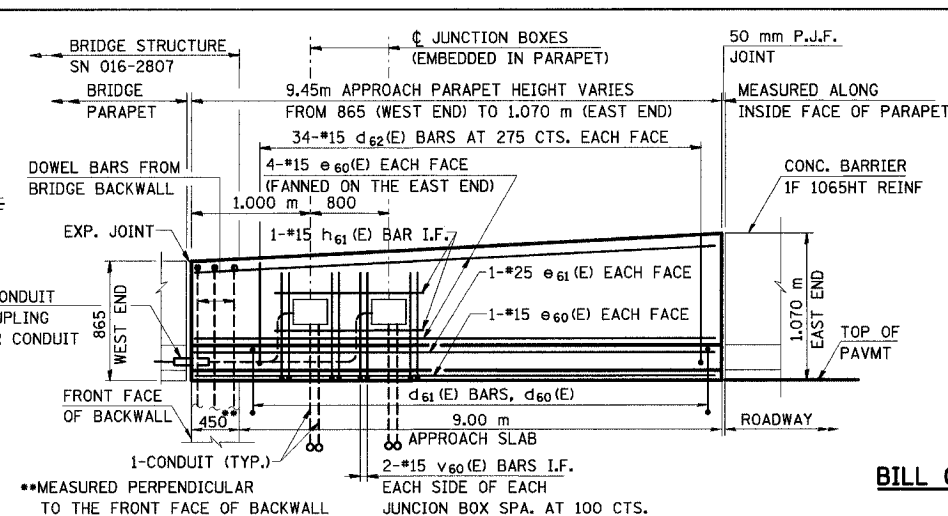
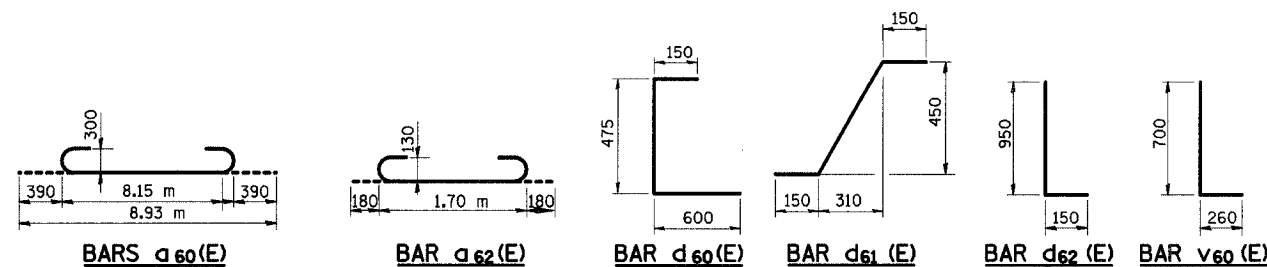


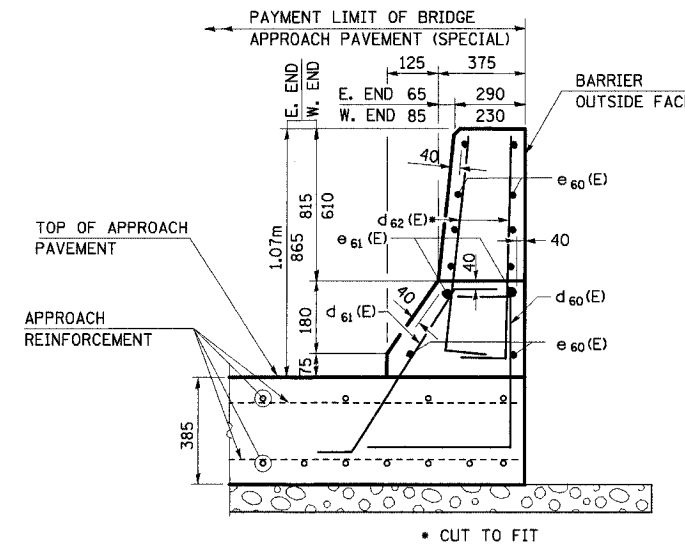
FBI RTE	SECTION	COUNTY	TOTAL SHEETS	SHEET NO.
80/94	*	COOK	870	667
STA.		TO STA.		
FED ROAD DIST. NO.		ILLINOIS FED. AID PROJECT		



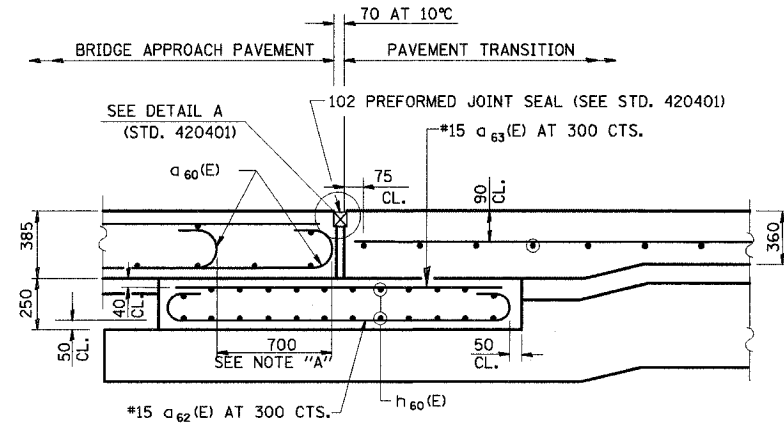
PLAN



NORTH PARAPET ELEVATION



SECTION A-A



SECTION G-G (SHOWING REINFORCEMENT)

NOTE "A"  
STAGGER a60(E) BARS AS SHOWN ON PLAN-FULL WIDTH

FOR DETAILS NOT SHOWN, SEE "SECTION C-C AND G-G- RIGID PAVEMENT", STANDARD 420401

**BILL OF MATERIAL BRIDGE APPROACH PAVEMENT (SPECIAL)**

BAR	NO.	SIZE	LENGTH (M)	SHAPE
a60(E)	100	#30	8.93	U
a61(E)	50	#15	8.90	U
a62(E)	51	#15	2.06	U
a63(E)	51	#15	1.70	U
b60(E)	62	#15	7.66	U
b61(E)	16	#15	7.66	U
h60(E)	48	#15	7.68	U
h61(E)	2	#15	2.40	U
d60(E)	34	#15	1.23	L
d61(E)	34	#15	0.84	L
d62(E)	68	#15	1.10	L
e60(E)	10	#15	9.35	U
e61(E)	2	#25	9.35	U
v60(E)	8	#15	0.96	L
REINFORCEMENT BARS, EPOXY COATED (1)			KG	7891
BRIDGE APPROACH PAVEMENT (SPECIAL)			M <sup>2</sup>	135

(1) INCLUDED FOR PAYMENT UNDER "BRIDGE APPROACH PAVEMENT (SPECIAL)"

**NOTES:**

1. WORK THIS SHEET WITH BRIDGE APPROACH PAVEMENT STANDARD 420401 AND PAVEMENT JOINTS STD. 420001.
2. BARS INDICATED THUS 12x2 ETC. INDICATE 12 LINES OF BARS WITH 2 LENGTHS PER LINE.
3. REINFORCEMENT BARS DESIGNATED "E" SHALL BE EPOXY COATED.
4. FOR THE 9 m APPROACH PAVEMENT AND SUPPORTING PAD, ALL WORK AND MATERIALS ARE INCLUDED FOR PAYMENT UNDER "BRIDGE APPROACH PAVEMENT (SPECIAL)".
5. REFER TO BRIDGE BACKWALL SHEET FOR DWEL BAR DETAILS SHOWN IN NORTH-PARAPET ELEVATION.
6. ALL DIMENSIONS ARE IN MILLIMETERS (mm) EXCEPT AS NOTED.

REVISIONS	
NAME	DATE

ILLINOIS DEPARTMENT OF TRANSPORTATION  
I-94 EAST BOUND / IL 394 SOUTH BOUND  
**BRIDGE APPROACH PAVEMENT (SPECIAL)**  
EB I-94 OVER THORN CREEK  
STRUCTURE NO. 016-2807  
EAST APPROACH

HORIZ SCALE:  
VERT SCALE:  
DATE: JUL 18, 2005  
DRAWN BY: LK  
CHECKED BY: PY

**HNTB**