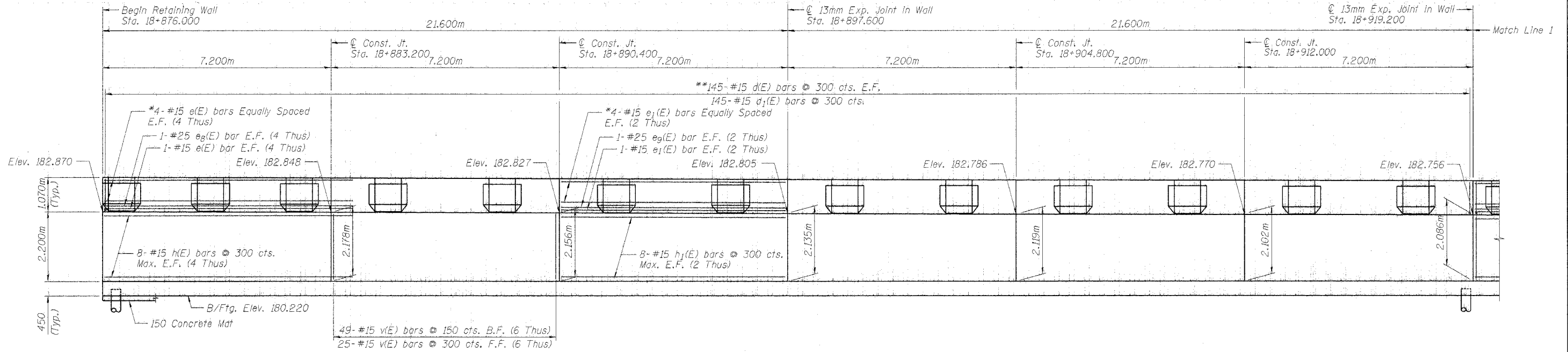


STATE OF ILLINOIS  
DEPARTMENT OF TRANSPORTATION

ROUTE NO.	SECTION	COUNTY	TOTAL SHEETS	SHEET NO.
F.A.I. 80/94	*	COOK	870	670
FED. ROAD DIST. NO. 1	ILLINOIS	FED. AID PROJECT		

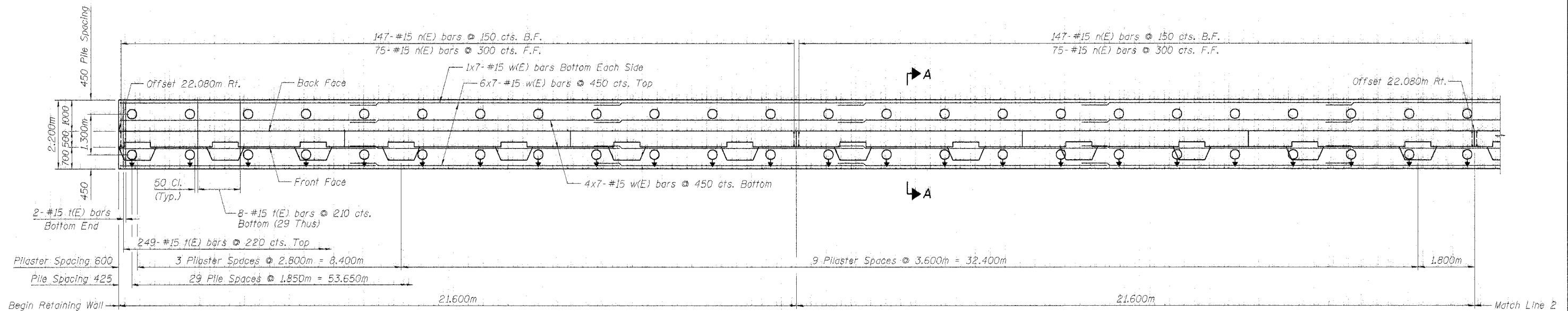
(0203.1 & 0312-708W) R-3 CONTRACT #62108

SHEET NO. 3  
12 SHEETS



- \* Cut Front Face top bar in field to clear pilaster
- \*\* Cut Front Face d(E) bars in field to clear pilaster

**ELEVATION**



**PLAN**

**NOTES**

- For Pilaster Details and Pilaster Reinforcement, see Sheet No. 8.
- For Bill of Material and Bar Details, see Sheet No. 7.
- For Cross Section A-A, see Sheet No. 7.
- Bars indicated thus: 6x7-#15 etc. Indicates 6 lines of bars with 7 lengths per line.
- For Rustication, Construction Joint and Expansion Joint Details, see Sheet No. 2.
- All dimensions are in millimeters (mm) except as noted.

**LEGEND**

- B.F. = Back Face
- F.F. = Front Face
- E.F. = Each Face
- T & B = Top & Bottom
- Pile Battered 1:6
- Vertical Pile

**BAR LAPS**

- #15 Bar = 640 (in wall and parapet)
- #25 Bar = 1,320m
- #15 Bar = 890 (in footing)

DESIGNED	LAS
CHECKED	DAZ
DRAWN	SAW
CHECKED	LAS

ILLINOIS DEPARTMENT OF TRANSPORTATION  
FAI ROUTE 80 (INTERSTATE 80/94)  
INTERSTATE 294 TO US ROUTE 41  
**PLAN & ELEVATION 1**  
IL 394 (F.A.I. 94) RETAINING WALL  
SECTION (0203.1 & 0312-708W) R-3  
COOK COUNTY  
STA. 18+876.000 STRUCTURE NO. 016-W866  
DATE, JULY 18, 2005  
SCALE

**BRANCO & ZROKA**  
ENGINEERING, P.C.