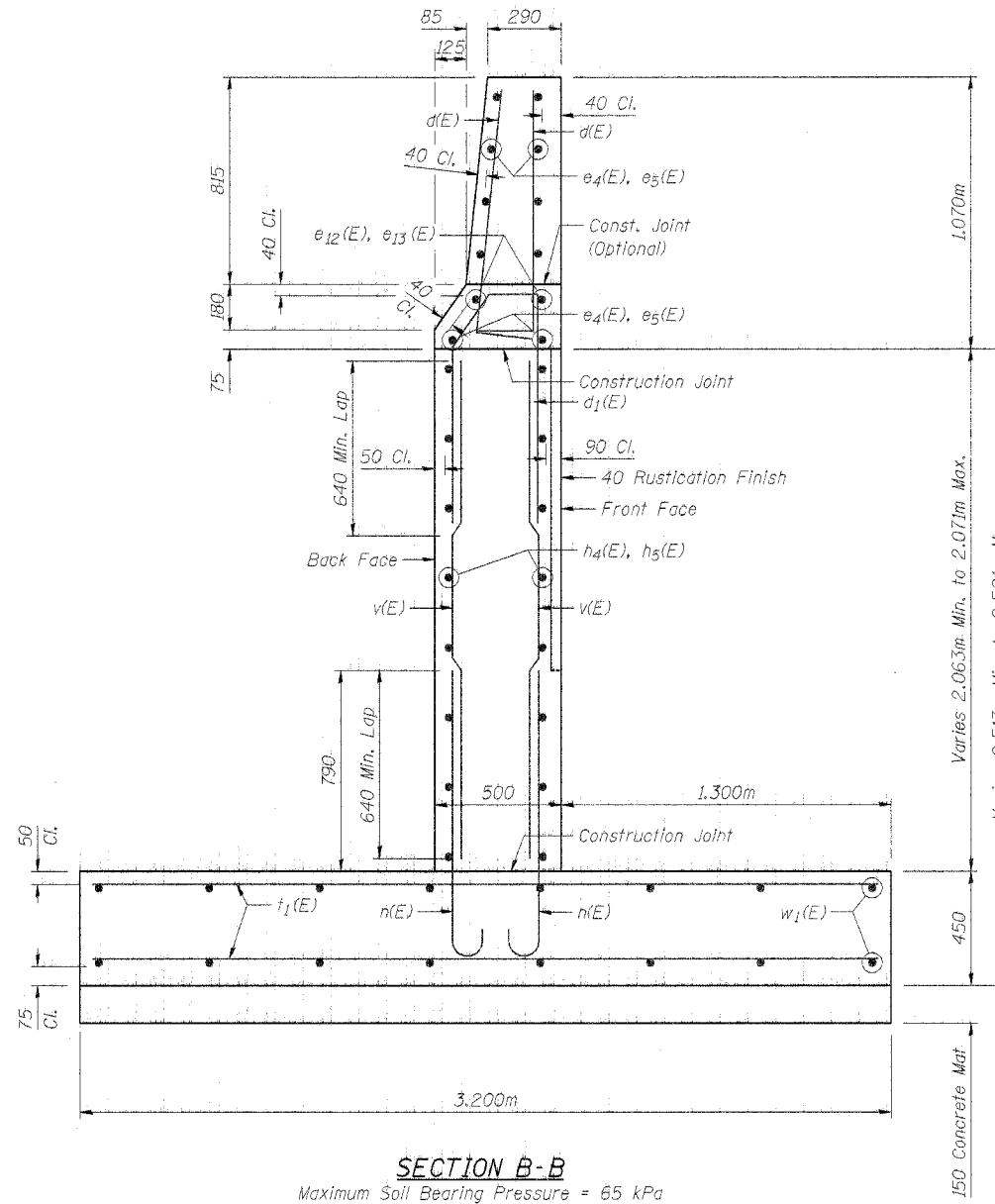
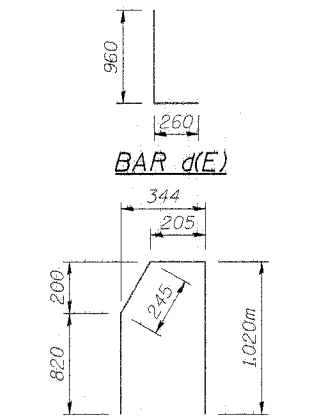


SECTION A-A

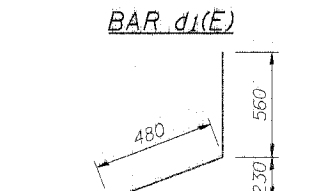


SECTION B-B

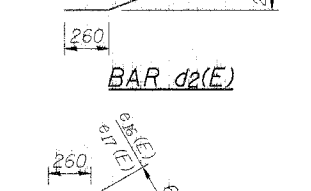
Maximum Soil Bearing Pressure = 65 kPa



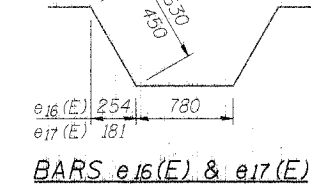
BAR d(E)



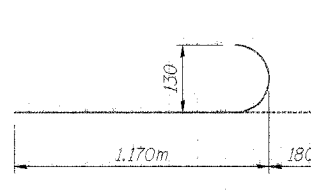
BAR d(E)



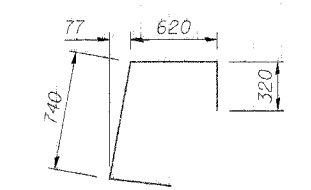
BAR d2(E)



BARS e16(E) & e17(E)



BAR n(E)



BAR u(E)

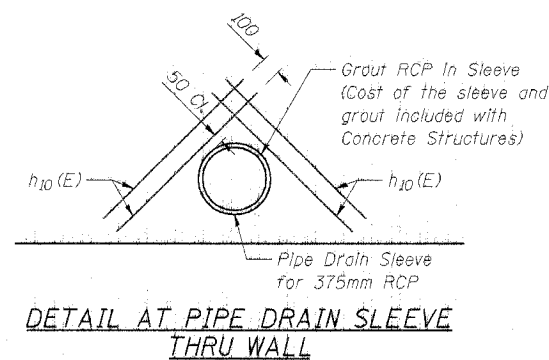
BILL OF MATERIAL

Bar	No.	Size	Length (m)	Shape
d(E)	1002	#15	1.22	L
d1(E)	501	#15	2.29	J
d2(E)	322	#15	1.30	J
e(E)	100	#15	7.84	—
e1(E)	50	#15	7.10	—
e2(E)	10	#15	6.29	—
e3(E)	10	#15	5.55	—
e4(E)	10	#15	5.67	—
e5(E)	10	#15	4.92	—
e6(E)	20	#15	7.19	—
e7(E)	10	#15	6.45	—
e8(E)	20	#25	8.52	—
e9(E)	10	#25	7.10	—
e10(E)	2	#25	6.97	—
e11(E)	2	#25	5.55	—
e12(E)	2	#25	6.35	—
e13(E)	2	#25	4.92	—
e14(E)	4	#25	7.87	—
e15(E)	2	#25	6.45	—
e16(E)	138	#15	2.56	—
e17(E)	46	#15	2.20	—
f(E)	160	#15	7.84	—
h1(E)	80	#15	7.10	—
h2(E)	16	#15	6.29	—
h3(E)	16	#15	5.55	—
h4(E)	16	#15	5.67	—
h5(E)	16	#15	4.92	—
h6(E)	32	#15	7.19	—
h9(E)	16	#15	6.45	—
h10(E)	8	#15	1.20	—
i(E)	1538	#15	1.35	—
f1(E)	1236	#15	2.10	—
f1(E)	96	#15	3.10	—
u(E)	322	#20	2.00	—
v(E)	1538	#15	1.96	—
w(E)	216	#15	8.55	—
w1(E)	16	#15	9.95	—
Item	Unit	Quantity		
Reinforcement Bars, Epoxy Coated	Kg	30,300		
Concrete Structures	m ³	432.6		

Reinforcement bars designated (E) shall be epoxy coated.

All dimensions are millimeters (mm) except as noted.

DESIGNED	LAS
CHECKED	DAZ
DRAWN	SAW
CHECKED	LAS



DETAIL AT PIPE DRAIN SLEEVE
THRU WALL

ILLINOIS DEPARTMENT OF TRANSPORTATION
FAI ROUTE 80 (INTERSTATE 80/94)
INTERSTATE 294 TO US ROUTE 41
REINFORCEMENT DETAILS
IL 394 (F.A.I. 94) RETAINING WALL
SECTION (0203.1 & 0312-708W) R-3
COOK COUNTY
STA. 18+876.000 STRUCTURE NO. 016-W866
DATE JULY 18, 2005
SCALE 1/50
BRANCO & ZROKA
ENGINEERING, P.C.