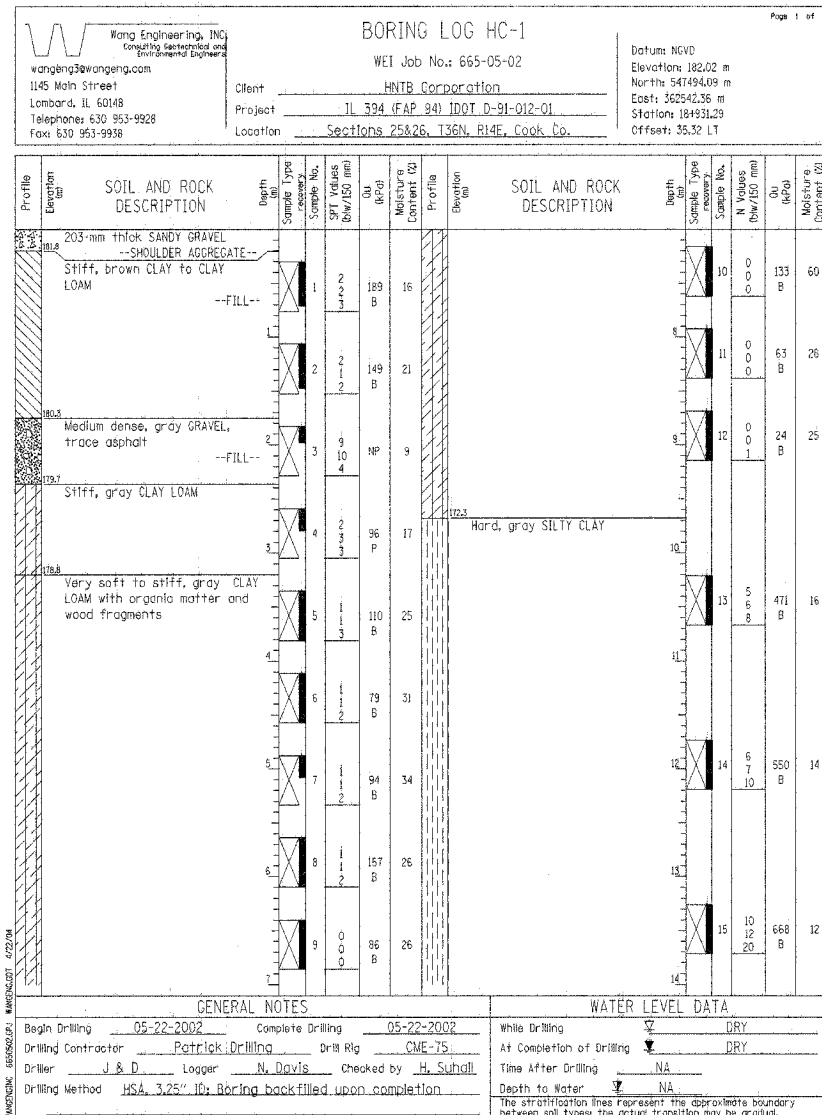
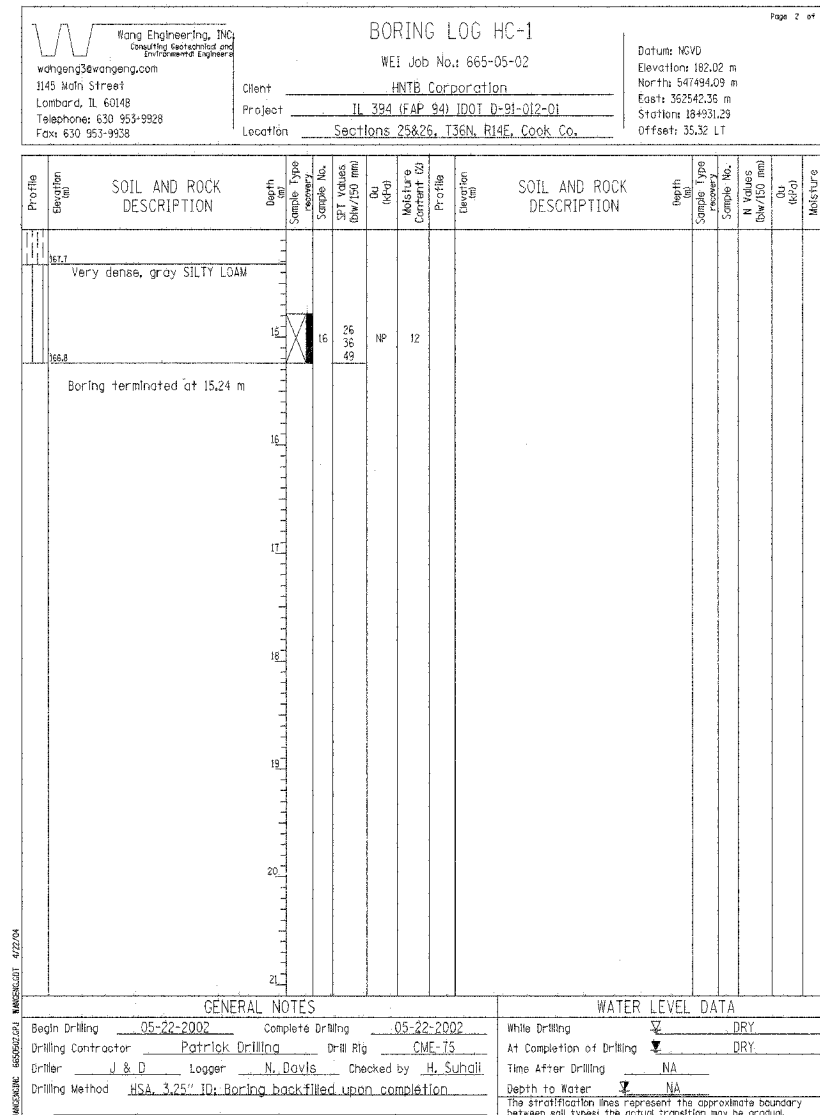


STATE OF ILLINOIS  
DEPARTMENT OF TRANSPORTATION

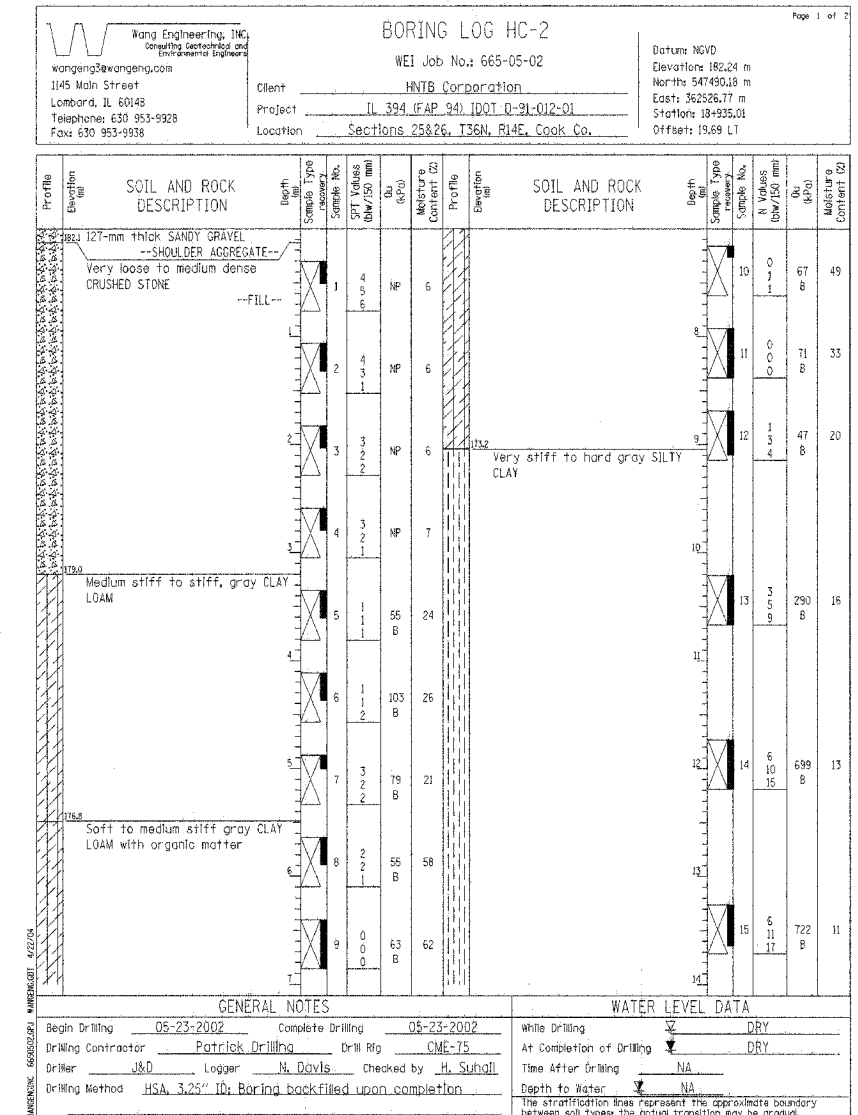
BORING LOG HC-1 (1 OF 2)



BORING LOG HC-1 (2 OF 2)



BORING LOG HC-2 (1 OF 2)



DESIGNED	PMM
CHECKED	LAS
DRAWN	SAW
CHECKED	LAS

ILLINOIS DEPARTMENT OF TRANSPORTATION  
FAI ROUTE 80 (INTERSTATE 80/94)  
INTERSTATE 294 TO US ROUTE 41  
SOIL BORING LOGS 1  
F.A.I. 94 BOX CULVERT  
SECTION (0203.1 & 0312-708W) R-3  
COOK COUNTY  
STA. 18+934.000  
STRUCTURE NO. 016-C012  
DATE JULY 18, 2005  
SCALE

**BRANCO & ZROKA**  
ENGINEERING, P.C.