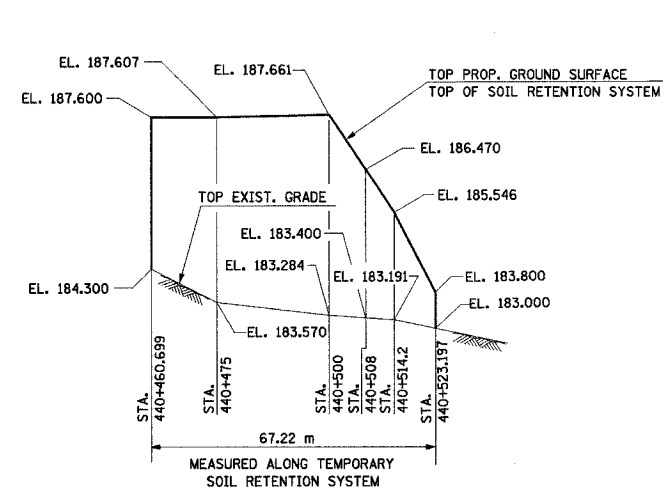
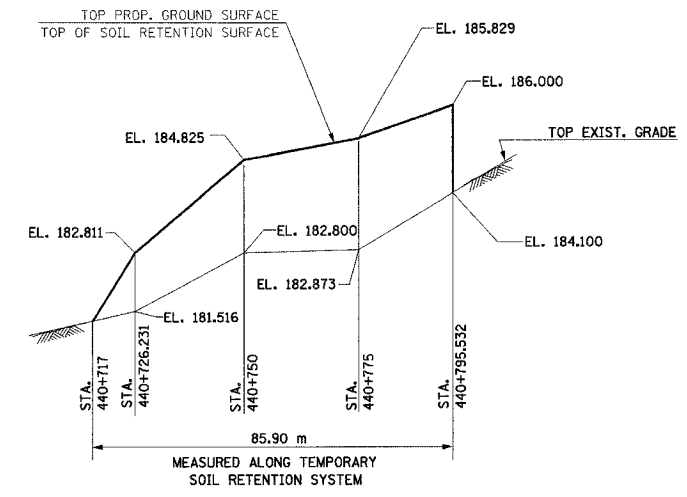


FAI RTE	SECTION	COUNTY	TOTAL SHEETS	SHEET NO.
80/94	•	COOK	870	705
STA.		TO STA.		
FED ROAD DIST. NO.	ILLINOIS	FED. AID PROJECT		

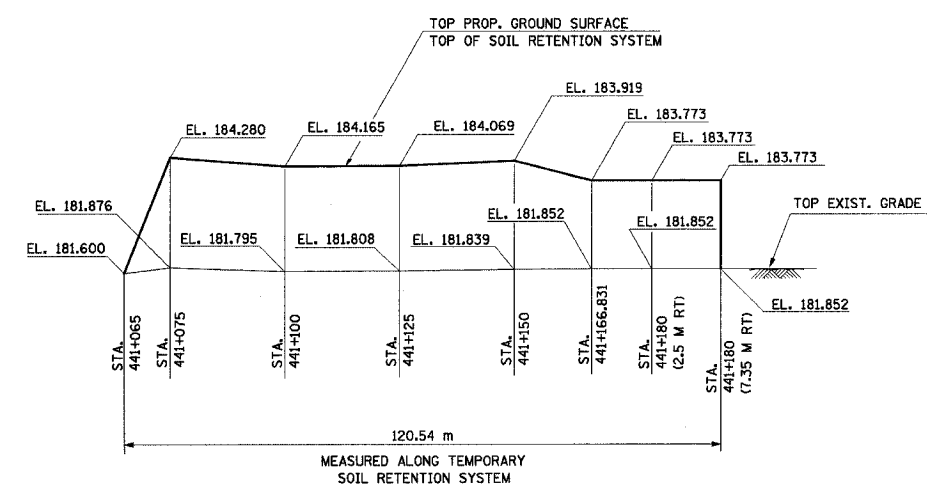


TEMPORARY SOIL RETENTION SYSTEM
SOUTH OF S. ABUTMENT SN 016-2800
 (LOOKING WEST)
 (N.T.S.)
 AREA= 235.00 SQ.M.



TEMPORARY SOIL RETENTION SYSTEM
NORTH OF N. ABUTMENT SN 016-2800
 (LOOKING WEST)
 (N.T.S.)
 AREA= 172.30 SQ.M.

NOTE:
 ALL STATIONING IS
 ON BASE LINE SB IL 394,
 UNLESS NOTED OTHERWISE



TEMPORARY SOIL RETENTION SYSTEM
WEST OF SB IL 394/NORTH OF SN 016-2800
 (LOOKING WEST)
 (N.T.S.)
 AREA= 253.60 SQ.M.

SUMMARY OF QUANTITIES

ITEM	UNIT	QUANTITY
TEMPORARY SOIL RETENTION SYSTEM	m ²	660.90

NOTES:

- FOR LOCATIONS OF TEMPORARY SOIL RETENTION SYSTEMS SEE PROPOSED PLAN DRAWINGS AND MAINTENANCE OF TRAFFIC DRAWINGS.
- WHERE TEMPORARY SOIL RETENTION SYSTEMS ARE SPECIFIED, A CANTILEVERED SHEET PILING DESIGN DOES NOT APPEAR FEASIBLE AND ADDITIONAL MEMBERS OR OTHER RETENTION SYSTEMS MAY BE NECESSARY. THE CONTRACTOR SHALL SUBMIT A TEMPORARY SOIL RETENTION SYSTEM DESIGN INCLUDING PLAN DETAILS AND CALCULATIONS STAMPED AND SIGNED BY AN ILLINOIS LICENSED STRUCTURAL ENGINEER FOR REVIEW AND ACCEPTANCE BY THE ENGINEER.

REVISIONS	
NAME	DATE

ILLINOIS DEPARTMENT OF TRANSPORTATION
 I-94 EAST BOUND / IL 394 SOUTH BOUND

TEMPORARY SOIL RETENTION SYSTEM
IL 394 SB
SOUTH OF 170TH STREET

HORIZ SCALE:
 VERT SCALE:
 DATE: JUL 18, 2005

DRAWN BY: LK
 CHECKED BY: DD

HNTB