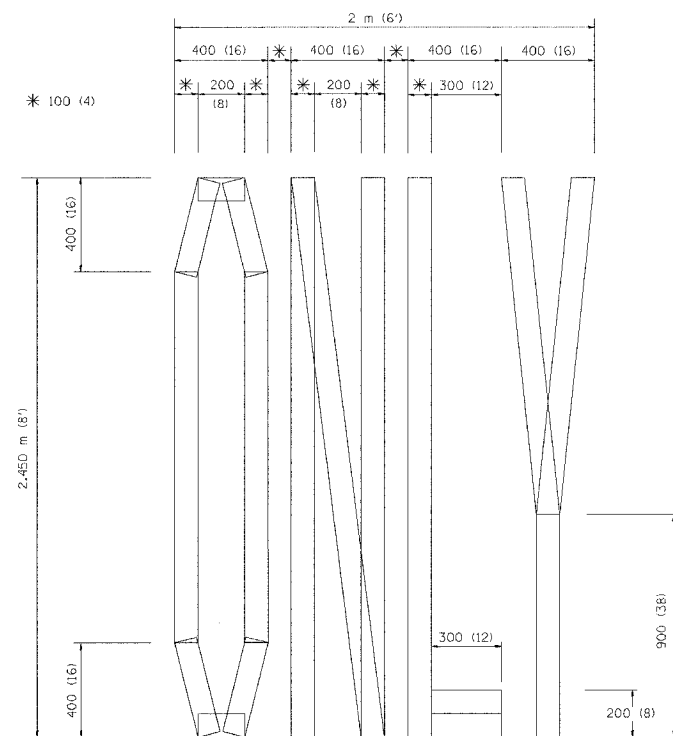
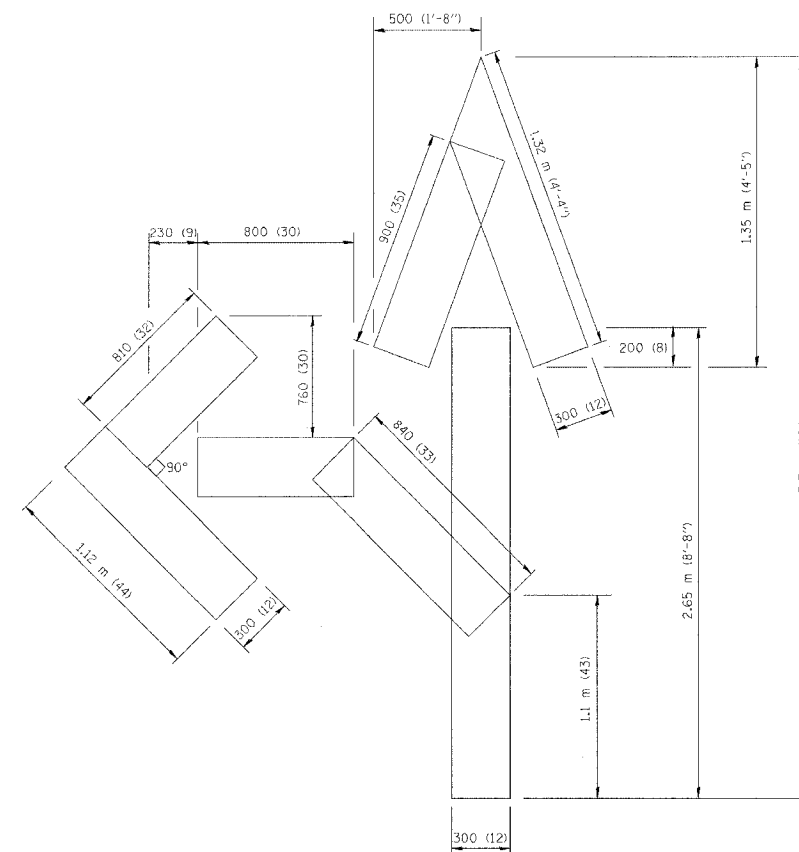


F. & E. SHEET NO.	SECTION	COUNTY	TOTAL SHEETS	SHEET NO.
80/94	*	COOK	870	745
STA.	TO STA.			
FED. ROAD DIST. NO.	ILLINOIS	FED. AID PROJECT		

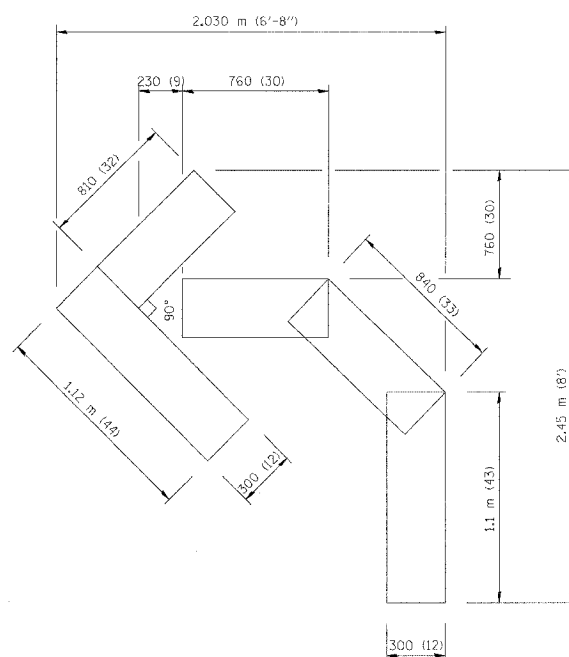
(0203.1 & 0312-708W) R-3 CONTRACT NO. 62108



QUANTITY
100 (4) LINE = 19.7 m (64.1 ft.)
1.97 sq. m (21.1 sq. ft.)



QUANTITY
100 (4) LINE = 25.3 m (82.5 ft.)
2.53 sq. m (27.5 sq. ft.)



QUANTITY
100 (4) LINE = 13.9 m (45.5 ft.)
1.39 sq. m (15.2 sq. ft.)

All dimensions are in millimeters (inches) unless otherwise shown.

ILLINOIS DEPARTMENT OF TRANSPORTATION

PAVEMENT MARKING
LETTERS AND SYMBOLS
FOR TRAFFIC STAGING

REVISIONS	
NAME	DATE
T. RAMMACHER	09/18/94
J. OBERLE	06/01/96
T. RAMMACHER	06/05/96
T. RAMMACHER	11/04/97
T. RAMMACHER	03/02/98
E. GOMEZ	08/28/00

SCALE: NONE
DATE **DATE**

DRAWN BY CADD
CHECKED BY

DATE-TIME
DGN-SPEC
VI=TC16