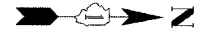
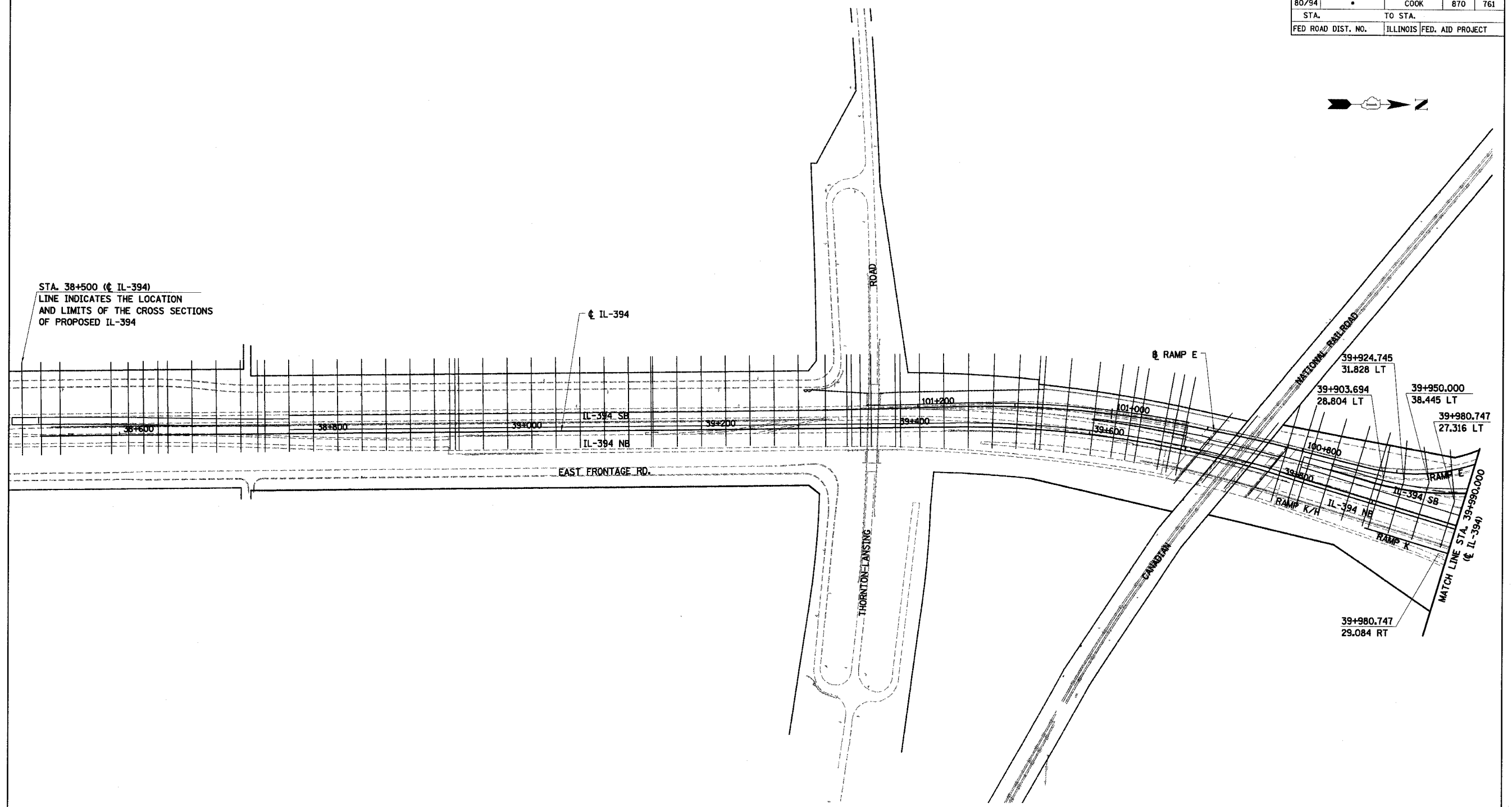


F.A.I. RTE	SECTION	COUNTY	TOTAL SHEETS	SHEET NO.
80/94	*	COOK	870	761
STA.		TO STA.		
FED ROAD DIST. NO.		ILLINOIS FED. AID PROJECT		



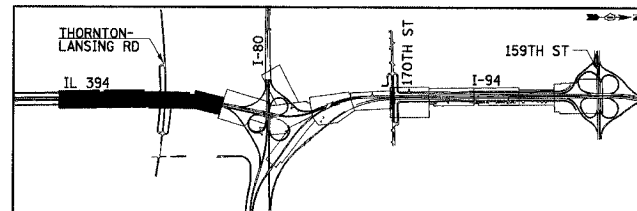
STA. 38+500 (¢ IL-394)  
 LINE INDICATES THE LOCATION  
 AND LIMITS OF THE CROSS SECTIONS  
 OF PROPOSED IL-394



KM-1

ILLINOIS DEPARTMENT OF TRANSPORTATION  
 I-94 EAST BOUND / IL 394 SOUTH BOUND

CROSS SECTION KEY MAP



REVISIONS	
NAME	DATE

HORIZ SCALE: 1 : 2000  
 VERT SCALE: NONE  
 DATE: JULY 18, 2005  
 DRAWN BY: BAJ/BJM  
 CHECKED BY: JES

