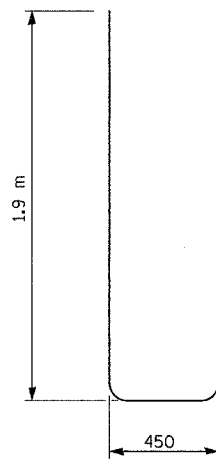
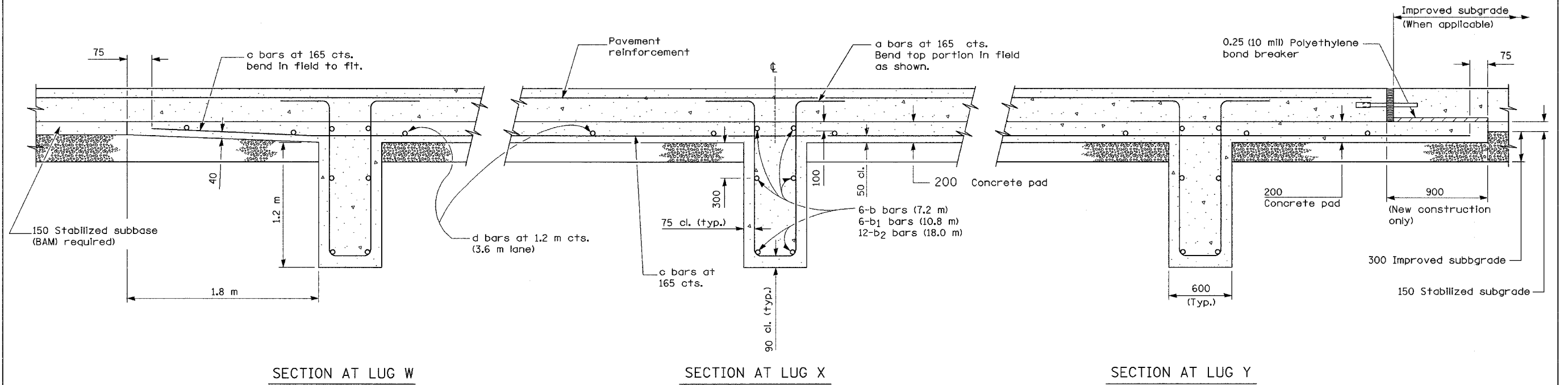
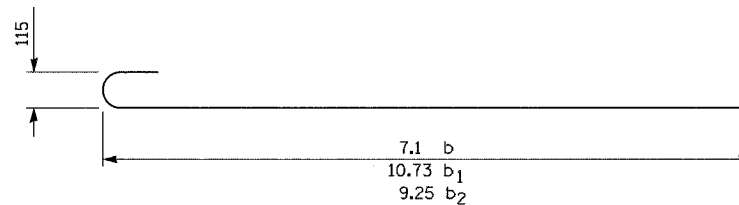


|                     |                        |                  |              |           |
|---------------------|------------------------|------------------|--------------|-----------|
| F.A.I. RTE.         | SECTION                | COUNTY           | TOTAL SHEETS | SHEET NO. |
| 80/94               | 2626.2-R-2             | COOK/LAKE        | 1207         | 99        |
| STA.                | TO STA.                |                  |              |           |
| FED. ROAD DIST. NO. | ILLINOIS               | FED. AID PROJECT |              |           |
| CONTRACT NO. 62114  | INDOT DES. NO. 0100987 |                  |              |           |



BAR a



BAR b

**GENERAL NOTES**

(See Detail for "Bar Reinforcement for 4.2 m CRC Pavement Reinforcement" for 4.2 m lane.

See Standard 421001 for details of pavement reinforcement for 3.6 m lane.

See Standards 420001 and 420401 for joint details not shown.

All dimensions are in millimeters unless otherwise shown.

**MATERIALS REQUIRED FOR (1) ONE LUG SYSTEM**  
(Excluding Pavement Concrete and Pavement Reinforcement)

Number of bars

| Bar            | Stg. I | Stg. II | Stg. III | Size   | Length | Shape |
|----------------|--------|---------|----------|--------|--------|-------|
| a              | 198    | 132     | 330      | No. 25 | 4.25   |       |
| b              | -      | 18      | -        | No. 15 | 7.29   |       |
| b <sub>1</sub> | 18     | -       | -        | No. 15 | 10.92  |       |
| b <sub>2</sub> | -      | -       | 36       | No. 15 | 9.44   |       |
| c              | 198    | 132     | 330      | No. 15 | 6.10   |       |
| d              | 42     | 28      | 70       | No. 13 | 3.52   |       |

|                                   | Stg. I<br>(10.8m) | Stg. II<br>(7.2m) | Stg. III<br>(18.0m) |
|-----------------------------------|-------------------|-------------------|---------------------|
| Concrete, m <sup>3</sup>          | 23.4              | 15.6              | 39.0                |
| Reinforcing Bars, kg              | 5740              | 3846              | 9586                |
| Concrete Pad, m <sup>2</sup>      | 156.0             | 104.0             | 260.0               |
| Improved Subgrade, m <sup>2</sup> | 175.5             | 117.0             | 292.5               |

All reinforcement shall be epoxy coated.

| REVISIONS |      |
|-----------|------|
| NAME      | DATE |
|           |      |
|           |      |
|           |      |
|           |      |

ILLINOIS DEPARTMENT OF TRANSPORTATION  
I-80/94/US 6  
KINGERY-BORMAN EXPRESSWAY  
BURNHAM ROAD TO US 41

**18.0 M CRC PAVEMENT  
(WITH LUG SYSTEM)**

SCALE NONE      DRAWN BY ACE/CAD  
DATE 07/05      CHECKED BY TAE

**AMERICAN**  
CONSULTING ENGINEERS