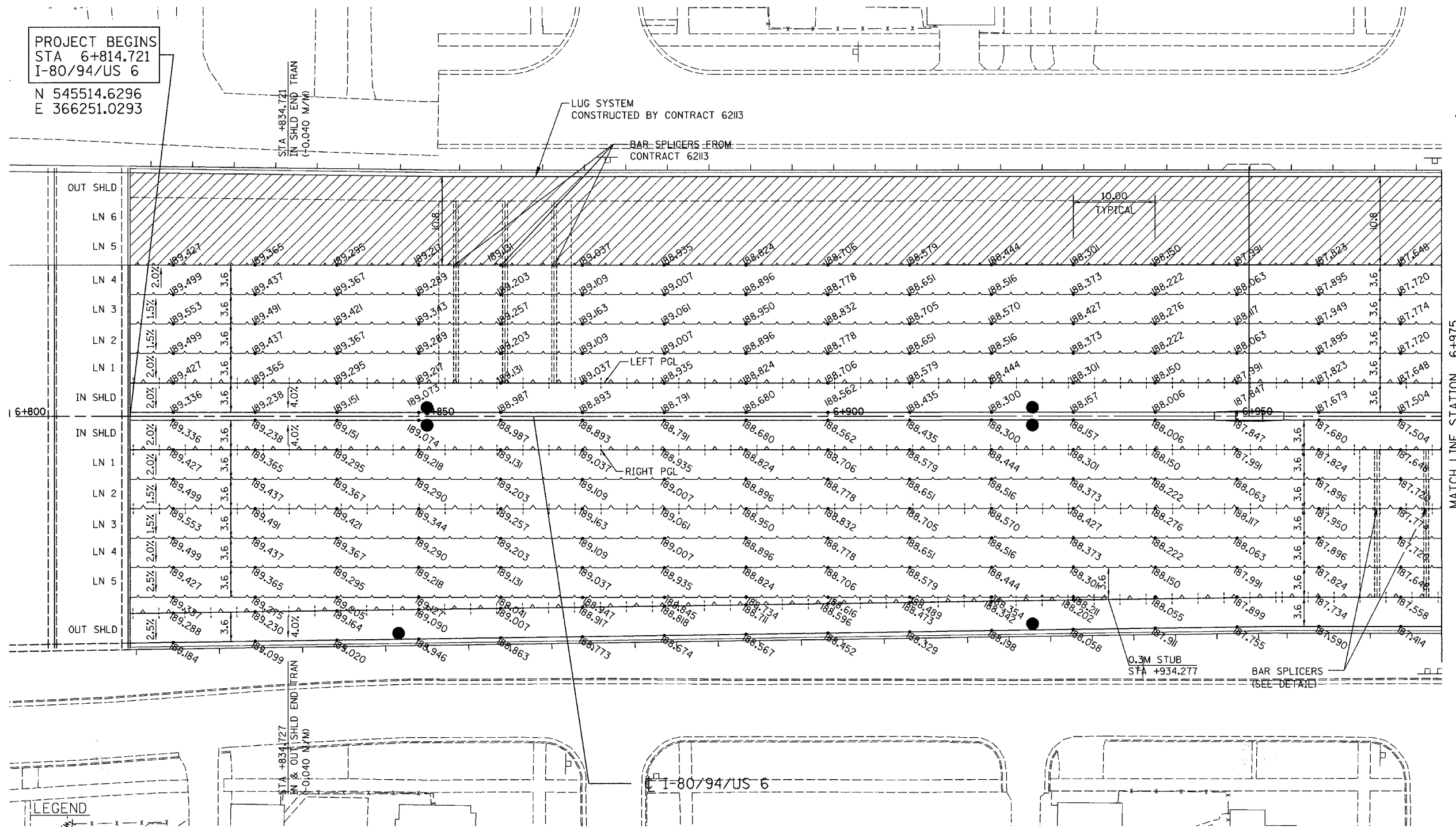


ALL DIMENSIONS IN METERS EXCEPT PAY ITEMS AND UNLESS NOTED OTHERWISE

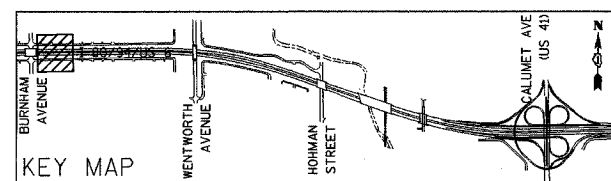
F.A.I. RTE.	SECTION	COUNTY	TOTAL SHEETS	SHEET NO.
80/94	2626.2-R-2	COOK/LAKE	1207	130
STA.	TO STA.			
FED. ROAD DIST. NO.	ILLINOIS	FED. AID PROJECT		
CONTRACT NO. 62114	INDOT DES. NO. 0100987			

PROJECT BEGINS  
STA 6+814.721  
I-80/94/US 6  
N 545514.6296  
E 366251.0293



LEGEND

- PAVEMENT ELEVATION (METERS)
- LONGITUDINAL JOINT
- LONGITUDINAL CONSTRUCTION JOINT
- PAVEMENT SWALE
- EXISTING PAVEMENT BY CONTRACT 62113



REVISIONS	
NAME	DATE

ILLINOIS DEPARTMENT OF TRANSPORTATION  
I-80/94/US 6 (KINGERY EXPRESSWAY)  
BURNHAM ROAD TO US 41 (CALUMET AVE)  
**PAVEMENT JOINTS AND ELEVATIONS**  
I-8094US 6  
STA 6+814.721 TO STA 6+975  
SCALE 1:250 DRAWN BY ACE/CAD  
DATE 07/05 CHECKED BY TAE

**AMERICAN**  
CONSULTING ENGINEERS



MATCH LINE STATION 6+975