
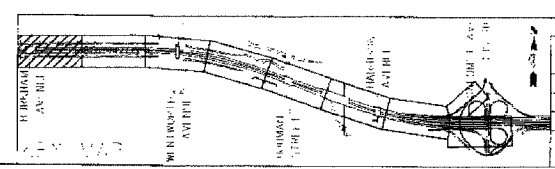
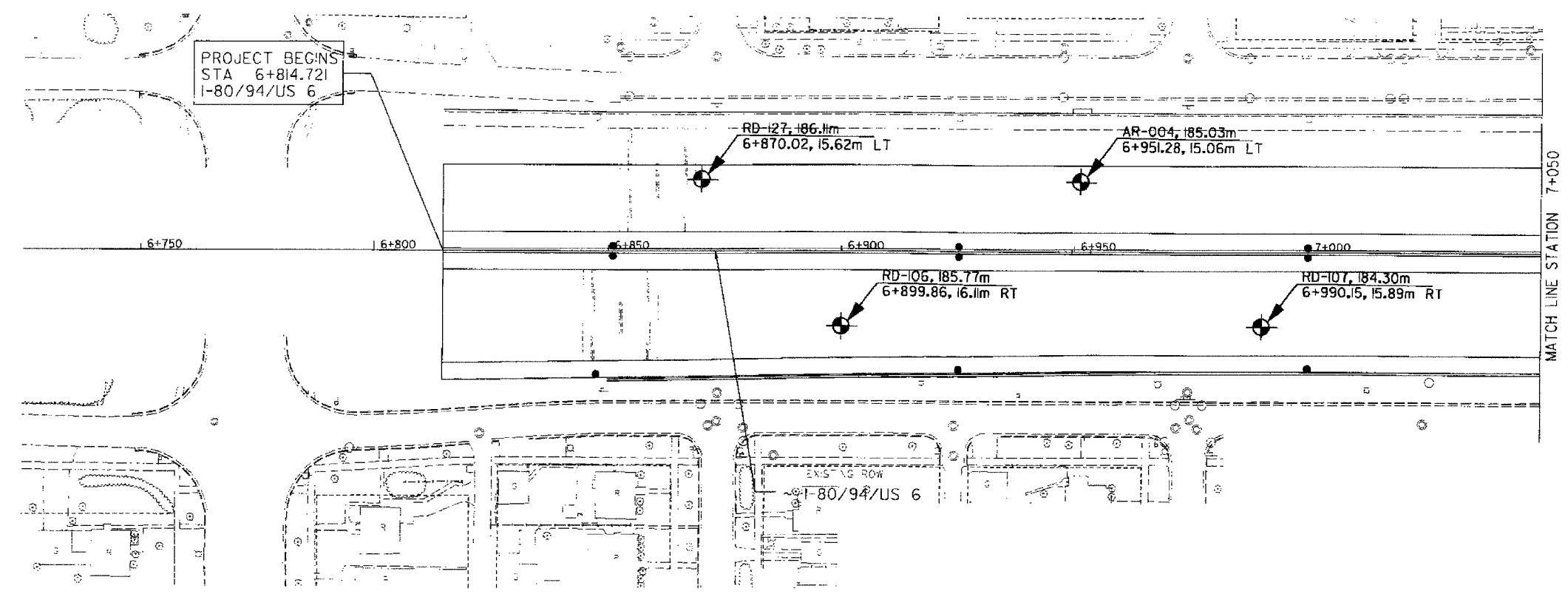


F.A.L. 80/94 (KINGERY EXPRESSWAY) BORING LOCATION ILLINOIS DEPARTMENT OF TRANSPORTATION, COOK COUNTY		DATE: 08/04	SCALE: 1"=40'	SHEET: 155
DATE: 08/04	SCALE: 1"=40'	DATE: 08/04	SCALE: 1"=40'	SHEET: 155
DATE: 08/04	SCALE: 1"=40'	DATE: 08/04	SCALE: 1"=40'	SHEET: 155
 Wang Engineering, Inc. 145 Main Street Lombard, IL 60148 Geo-Environmental Engineers 630-953-9828		ALL DIMENSIONS IN METERS EXCEPT PAVEMENTS AND UNLESS NOTED OTHERWISE		



REVISIONS	
NAME	DATE

ILLINOIS DEPARTMENT OF TRANSPORTATION
I-80/94/US 6
KINGERY-BORMAN EXPRESSWAY
BURNHAM ROAD TO US 41

STA. 6+814.721 TO STA. 7+050
SCALE
DATE 08/04

DRAWN BY ACE/CAD
CHECKED BY