
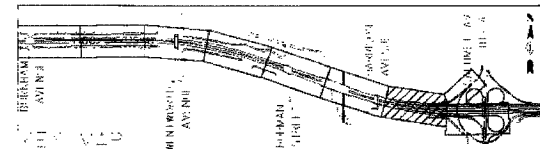
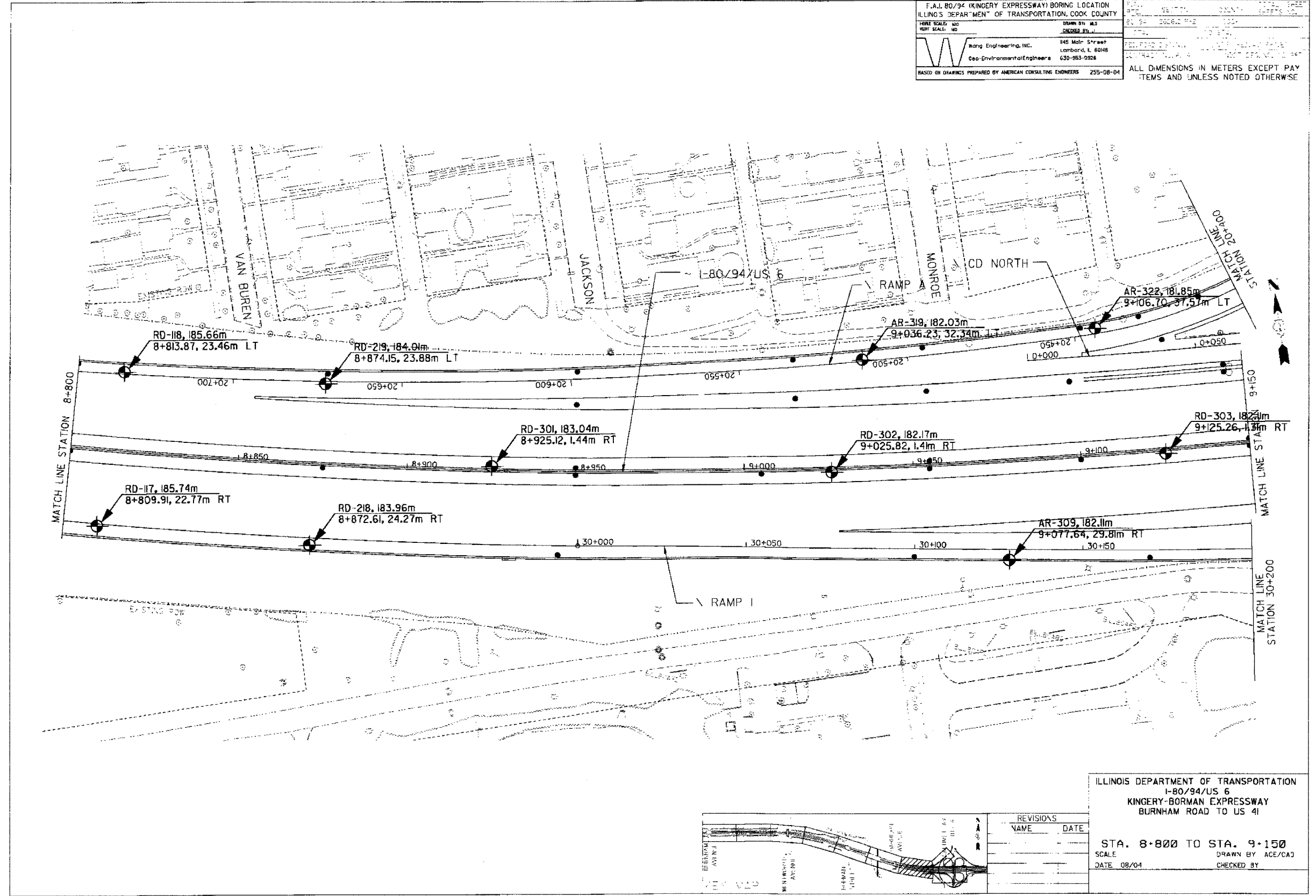


F.A.I. 80/94 (KINGERY EXPRESSWAY) BORING LOCATION ILLINOIS DEPARTMENT OF TRANSPORTATION, COOK COUNTY		DATE: 08/04	SCALE: 1"=100'
HORIZ. SCALE: 1"=100'	VERT. SCALE: 1"=10'	DRAWN BY: M.S.	CHECKED BY: J.S.
 Wang Engineering, Inc. Geo-Environmental Engineers		145 Main Street Lombard, IL 60148 630-953-2926	
BASED ON DRAWINGS PREPARED BY AMERICAN CONSULTING ENGINEERS 255-08-04		ALL DIMENSIONS IN METERS EXCEPT PAVEMENTS AND UNLESS NOTED OTHERWISE	



REVISIONS	
NAME	DATE

ILLINOIS DEPARTMENT OF TRANSPORTATION  
I-80/94/US 6  
KINGERY-BORMAN EXPRESSWAY  
BURNHAM ROAD TO US 41

STA. 8+800 TO STA. 9+150  
SCALE: 1"=100'  
DATE: 08/04

DRAWN BY: ACE/CAJ  
CHECKED BY: