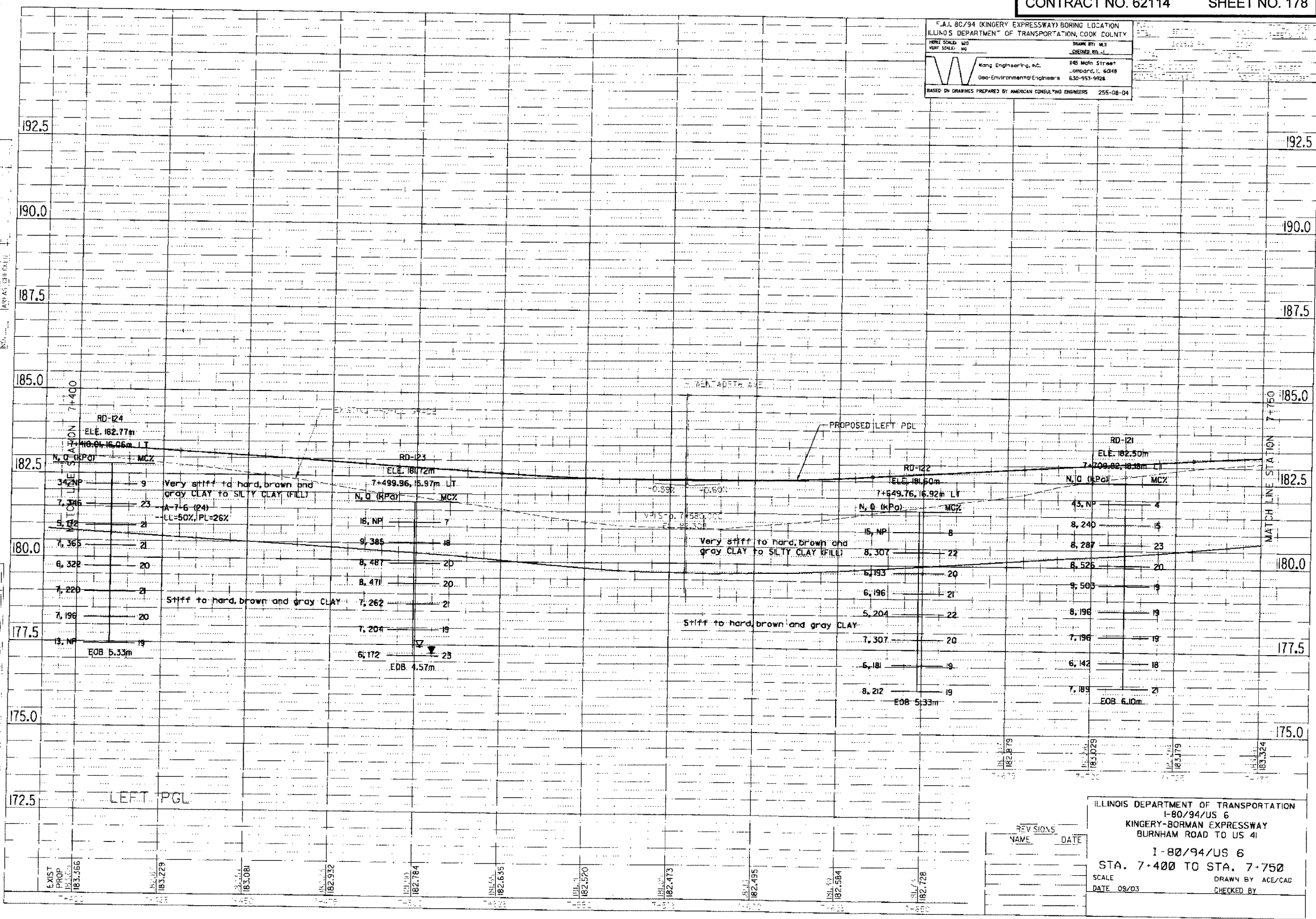


I-80/94 (KINGERY EXPRESSWAY) BORING LOCATION
 ILLINOIS DEPARTMENT OF TRANSPORTATION, COOK COUNTY
 DRAWN BY: M.S. CHENG, R.D. 1
 Wang Engineering, Inc. 145 Mohr Street
 Lombard, IL 60148
 Geo-Environmental Engineers 630-953-9928
 BASED ON DRAWINGS PREPARED BY AMERICAN CONSULTING ENGINEERS 255-08-04

FINAL SURVEY REPORT
 NOT TO BE USED FOR
 ANY OTHER PURPOSES
 WITHOUT THE WRITTEN
 CONSENT OF THE
 SURVEYOR

ORIGINAL SURVEY FIELD
 NOTES TO BE KEPT
 WITH THIS REPORT
 AND NOT TO BE
 SEPARATED FROM IT



REV	NO.	NAME	DATE

ILLINOIS DEPARTMENT OF TRANSPORTATION
 I-80/94/US 6
 KINGERY-BORMAN EXPRESSWAY
 BURNHAM ROAD TO US 41
 STA. 1-80/94/US 6
 STA. 7+400 TO STA. 7+750
 SCALE
 DATE 08/03
 DRAWN BY ACE/CAD
 CHECKED BY