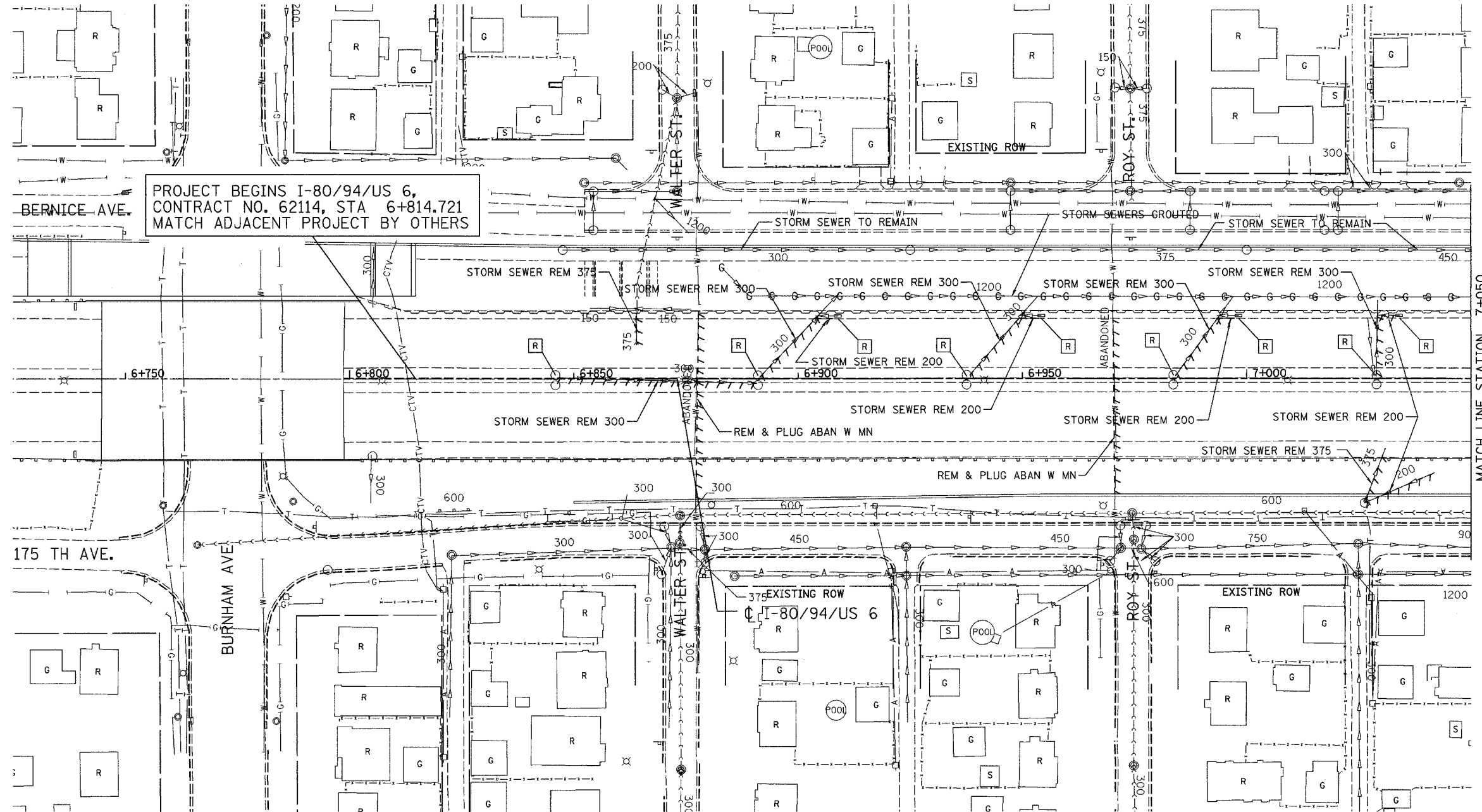


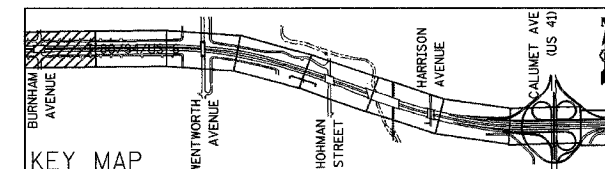
ALL DIMENSIONS IN METERS EXCEPT PAY ITEMS AND UNLESS NOTED OTHERWISE

F.A.I. RTE.	SECTION	COUNTY	TOTAL SHEETS	SHEET NO.
80/94	2626.2-R-2	COOK/LAKE	1207	242
STA.	TO STA.			
FED. ROAD DIST. NO.	ILLINOIS	FED. AID PROJECT		
CONTRACT NO. 62114	INDOT DES. NO. 0100987			



PROJECT BEGINS I-80/94/US 6,  
CONTRACT NO. 62114, STA 6+814.721  
MATCH ADJACENT PROJECT BY OTHERS

MATCH LINE STATION 7+050



REVISIONS	
NAME	DATE

ILLINOIS DEPARTMENT OF TRANSPORTATION  
I-80/94/US 6  
KINGERY-BORMAN EXPRESSWAY  
BURNHAM ROAD TO US 41  
**EXISTING DRAINAGE & UTILITY PLAN**

**STA. 6 + 814.721 TO STA. 7 + 050**  
SCALE 1:500 DRAWN BY ACE/CAD  
DATE 07/05 CHECKED BY TAE

**AMERICAN**  
CONSULTING ENGINEERS