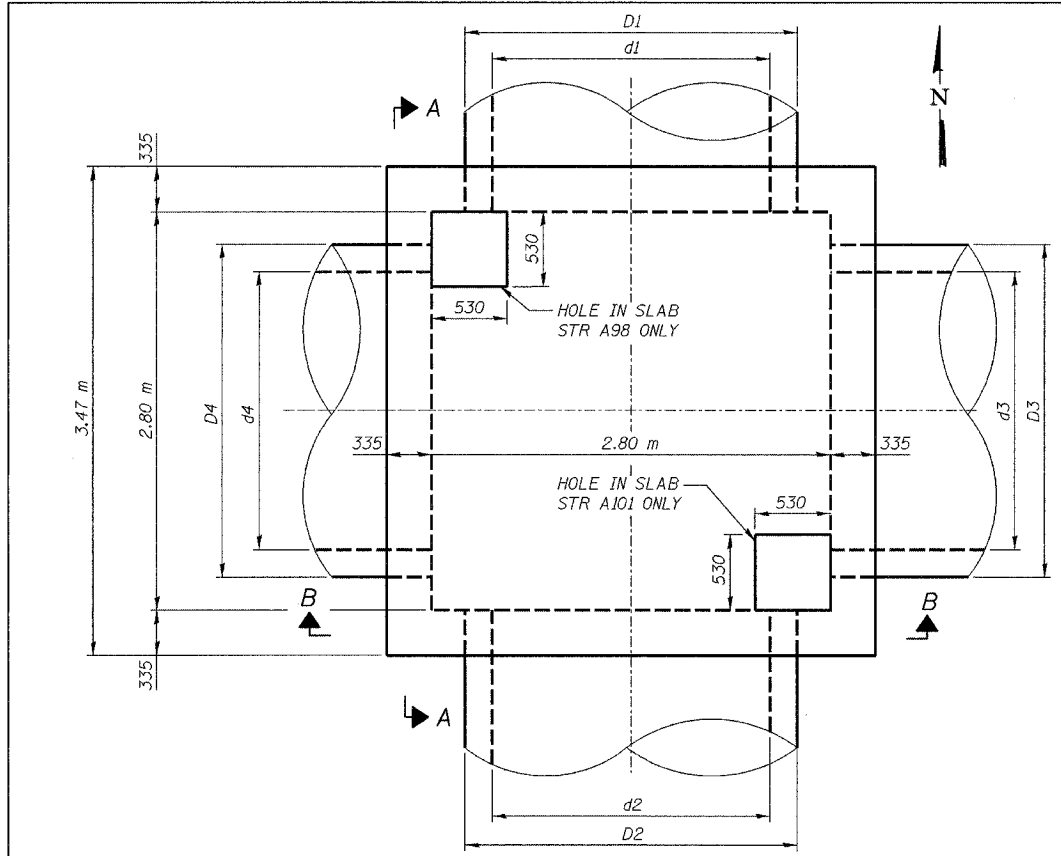
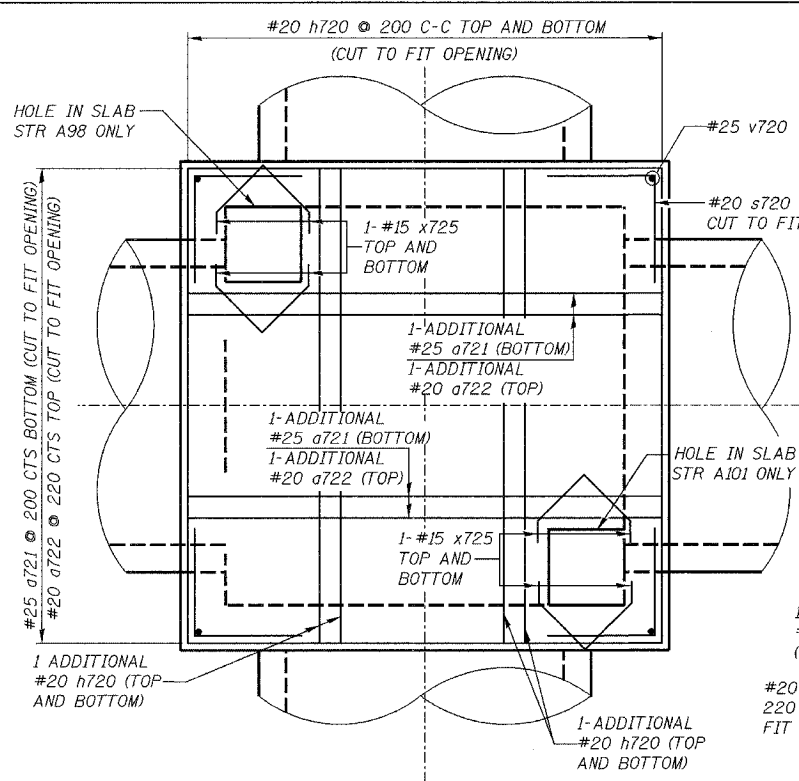


F.A.I. RTE.	SECTION	COUNTY	TOTAL SHEETS	SHEET NO.
80/94	2626.2-R-2	COOK/LAKE	1207	288A
STA.	TO STA.			
FED. ROAD DIST. NO.	ILLINOIS	FED. AID PROJECT		
CONTRACT NO. 62114	INDOT DES. NO. 0100987			



PLAN

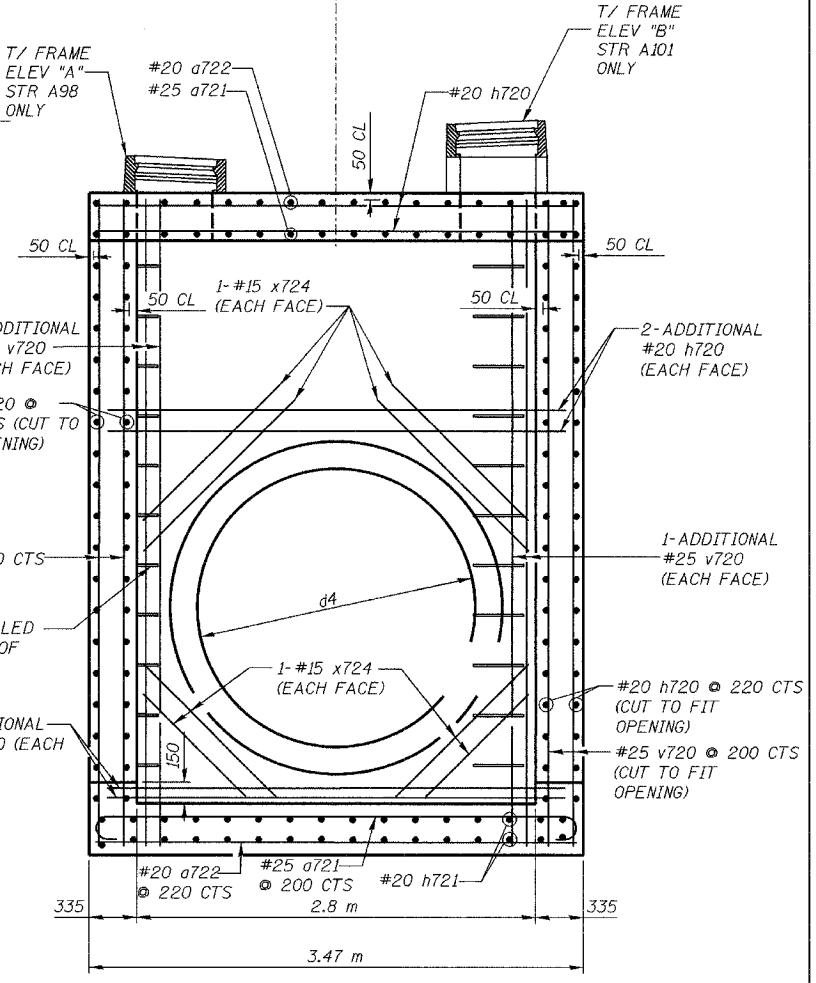


PLAN (W/ REINFORCEMENT)

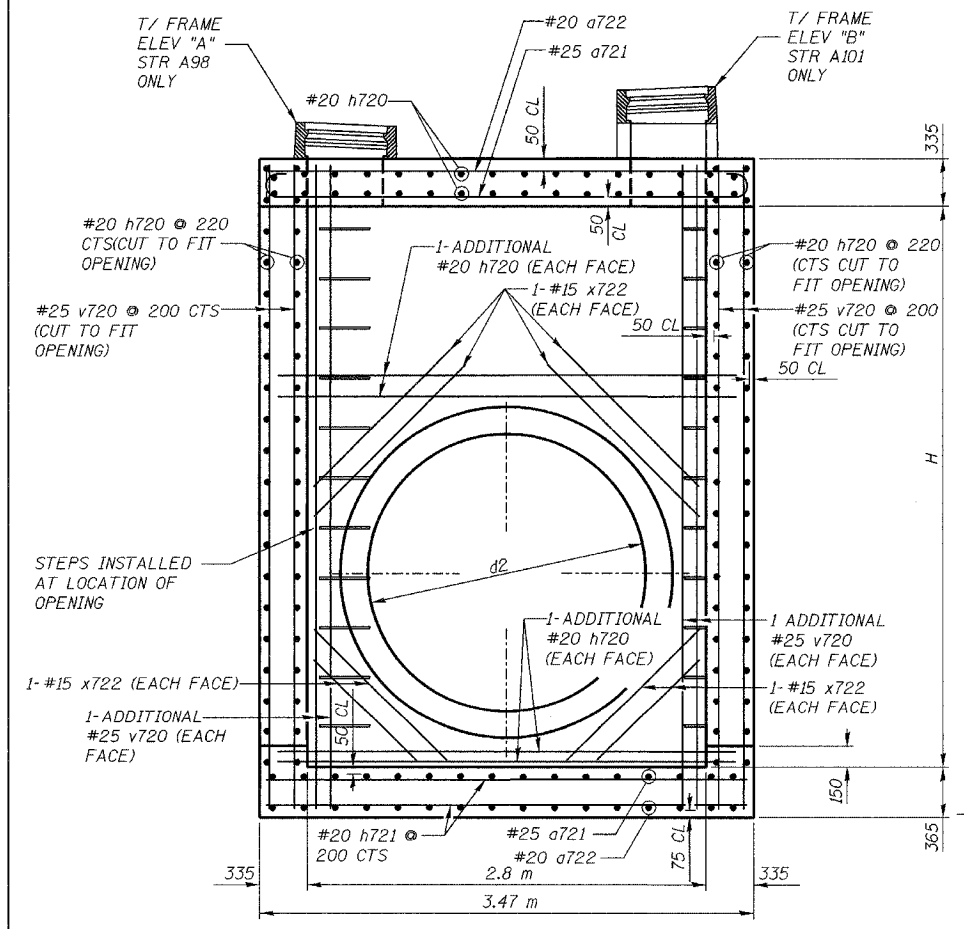
BAR LIST

BAR	SIZE	STR NO A98	NO./LENGTH(m)	STR NO A101	NO./LENGTH(m)	Shape
a721	#25	40	3.81	40	3.81	—
a722	#20	19	3.37	19	3.37	—
h720	#20	154	3.37	154	3.37	—
h721	#20	57	3.32	57	3.32	—
s720	#20	52	1.50	52	1.50	┌
v720	#25	184	2.51	184	2.51	—
x721	#15	N/A	N/A	16	2.53	—
x722	#15	16	2.53	N/A	N/A	—
x723	#15	16	2.53	N/A	N/A	—
x724	#15	N/A	N/A	16	2.53	—
x725	#15	16	0.61	16	0.61	┘

ALL DIMENSIONS IN MILLIMETERS EXCEPT PAY ITEMS AND UNLESS NOTED OTHERWISE



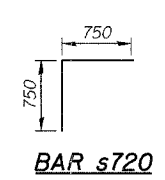
SECTION A-A



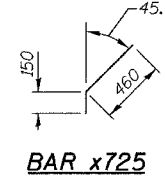
SECTION B-B

STR. NO.	LOCATION	FRAME & LID	PIPE 1 (N)				PIPE 2 (S)				PIPE 3 (E)				T/FRAME ELEV "A"		T/FRAME ELEV "B"		T/SLAB ELEV "H"	HEIGHT "H"
			d1	INVERT	D1	d2	INVERT	D2	d3	INVERT	D3	d4	INVERT	D4	182.288	182.288	181.896	2.63		
A98	7+942.00, 30.18 m LT	1-TYPE 1 FRAME, CLOSED LID	-	-	1950	179.151	2332	1950	179.120	2332	-	-	-	-	-	-	-	-	2.63	
A101	7+972.75, 35.95 m LT	1-TYPE 1 FRAME, CLOSED LID	1950	179.051	2332	-	-	-	-	-	-	1950	179.081	2332	-	-	182.429	181.827	2.63	

STRUCTURE DETAILS AND DIMENSIONS



BAR s720



BAR x725

FURNISH AND INSTALL CAST IRON STEPS, STD 602701

BAR a721

DESIGN STRESSES

CONCRETE $f'c = 24 \text{ MPa}$
REINFORCEMENT $f_y = 400 \text{ MPa}$

REVISIONS	
NAME	DATE

ILLINOIS DEPARTMENT OF TRANSPORTATION
I-80/94/US 6
KINGERY-BORMAN EXPRESSWAY
BURNHAM ROAD TO US 41
JUNCTION CHAMBER NO. 5

SCALE NTS
DATE 07/05

DRAWN BY ACE/CAD
CHECKED BY TAE

AMERICAN
CONSULTING ENGINEERS