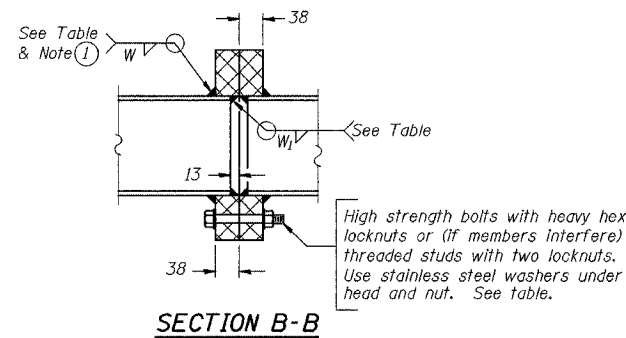


ALL DIMENSIONS IN MILLIMETERS EXCEPT  
PAY ITEMS AND UNLESS NOTED OTHERWISE

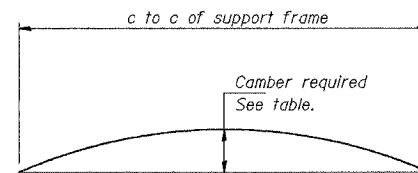
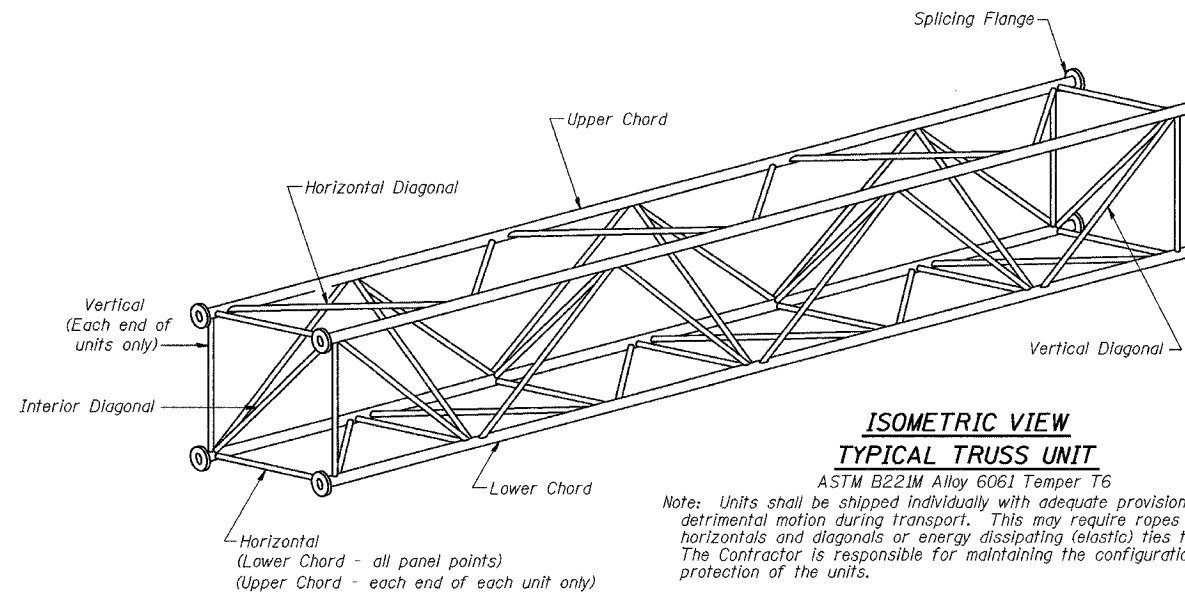
F.A.I. RTE. 80/94	SECTION 2626.2-R-2	COUNTY COOK/LAKE	TOTAL SHEETS 1207	SHEET NO. 374
STA.		TO STA.		
FED. ROAD DIST. NO.		ILLINOIS		FED. AID PROJECT
CONTRACT NO. 62114		INDOT DES. NO. 0100987		

**TRUSS UNIT TABLE**

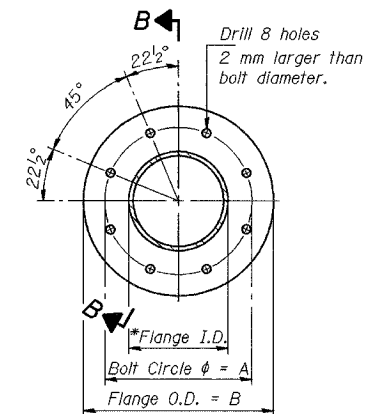
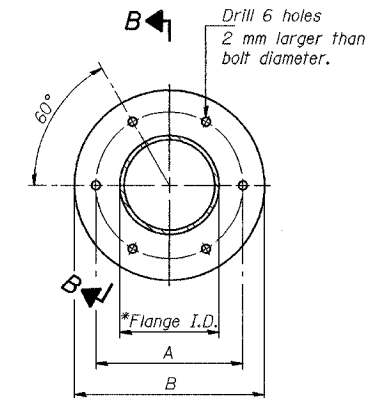
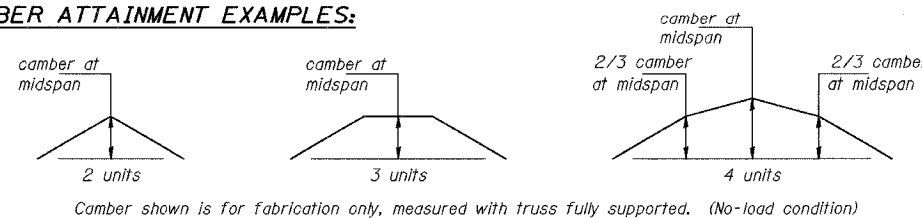
Structure Number	Station	Design Truss Type	Exterior Units (2)			Interior Unit				Upper & Lower Chord		Verticals; Horizontals; Vertical, Horizontal, and Interior Diagonals		Camber at Midspan	Splicing Flange					
			No. Panels per Unit	Unit Lgth.(L <sub>e</sub> ) (m)	Panel Lgth.(P) (m)	No. Req'd.	No. Panels per Unit	Unit Lgth.(L <sub>i</sub> ) (m)	Panel Lgth.(P) (m)	O.D.	Wall	O.D.	Wall		Bolts		Weld Sizes		A	B
															No./Splice	Dia.	W	W <sub>i</sub>		
ISO161080L162.9	6+951.478	II-A	7	10.857	1.470	1	6	9.197	1.470	165	8	76	8	62.7	6	M30	10	6	279	368
ISO161080R163.1	7+239.540	II-A	6	9.168	1.433	1	6	8.978	1.433	140	8	76	8	49.3	6	M24	10	6	235	311
ISO161080L163.1	7+312.695	II-A	8	11.370	1.350	1	8	11.180	1.350	178	8	76	8	81.3	6	M30	8	6	292	368
ISO161080L163.5	7+948.045	III-A	6	9.168	1.433	1	6	8.978	1.433	178	8	83	8	42.6	8	M30	14	11	292	381



① Splicing Flanges shall be attached to each truss unit with the truss shop assembled to camber shown. Truss units shall be in proper alignment and flange surfaces shall be shop bolted into full contact before welding. Sufficient external welds or tacks shall be made to secure flanges until remaining welds are made after disassembly. Adjacent flanges shall be "match marked" to insure proper field assembly.



**CAMBER ATTAINMENT EXAMPLES:**



**SPLICING FLANGES**

ASTM B221M, Alloy 6061-T6  
or ASTM B209M, Alloy 6061-T651  
\*To fit O.D. of Chord with maximum gap of 2 mm.

NUMBER	REVISION	DATE

REVISIONS	
NAME	DATE

ILLINOIS DEPARTMENT OF TRANSPORTATION  
1-80/94/US 6  
KINGERY-BORMAN EXPRESSWAY  
BURNHAM ROAD TO US 41  
**OVERHEAD SIGN STRUCTURES  
ALUMINUM TRUSS DETAILS**  
FOR TRUSS TYPES I-A, II-A and III-A  
SCALE NONE DRAWN BY ACE/CAD  
DATE 07/05 CHECKED BY TAE

**AMERICAN**  
CONSULTING ENGINEERS