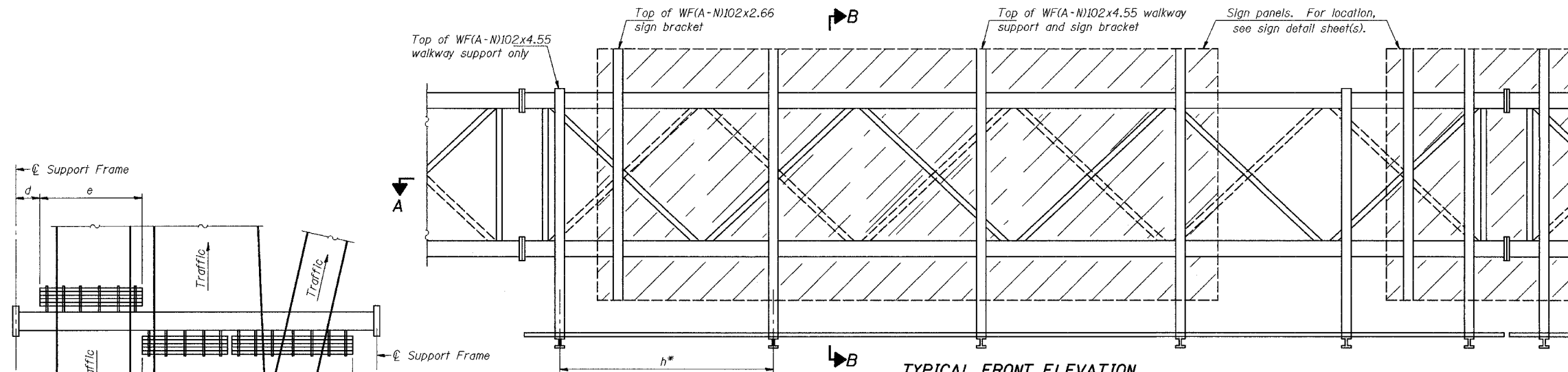
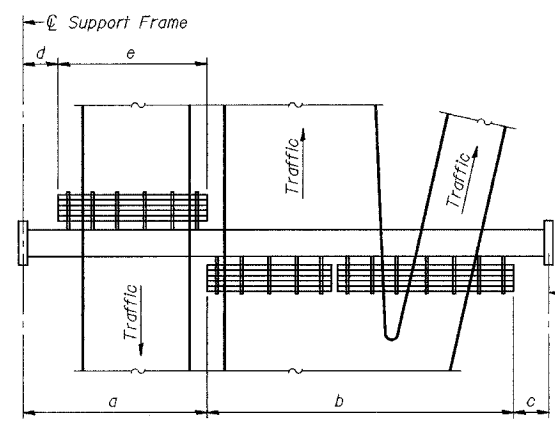


ALL DIMENSIONS IN MILLIMETERS EXCEPT  
PAY ITEMS AND UNLESS NOTED OTHERWISE

F.A.I. RTE. 80/94	SECTION 2626.2-R-2	COUNTY COOK/LAKE	TOTAL SHEETS 1207	SHEET NO. 380
STA. TO STA.		ILLINOIS FED. AID PROJECT		
FED. ROAD DIST. NO.		CONTRACT NO. 62114		
		INDOT DES. NO. 0100987		



**TYPICAL FRONT ELEVATION**  
With lights and handrail omitted for clarity.  
For Section B-B, see Base Sheet OS-A-10(M).



**PLAN WALKWAY AND HANDRAIL SKETCH**  
(Road plan beneath truss varies)

**BRACKET TABLE**

Sign Width		Number Brackets Required
Greater Than	Less Than or Equal To	
2.45	4.3	3
4.3	6.15	4
6.15	8.0	5
8.0	9.85	6

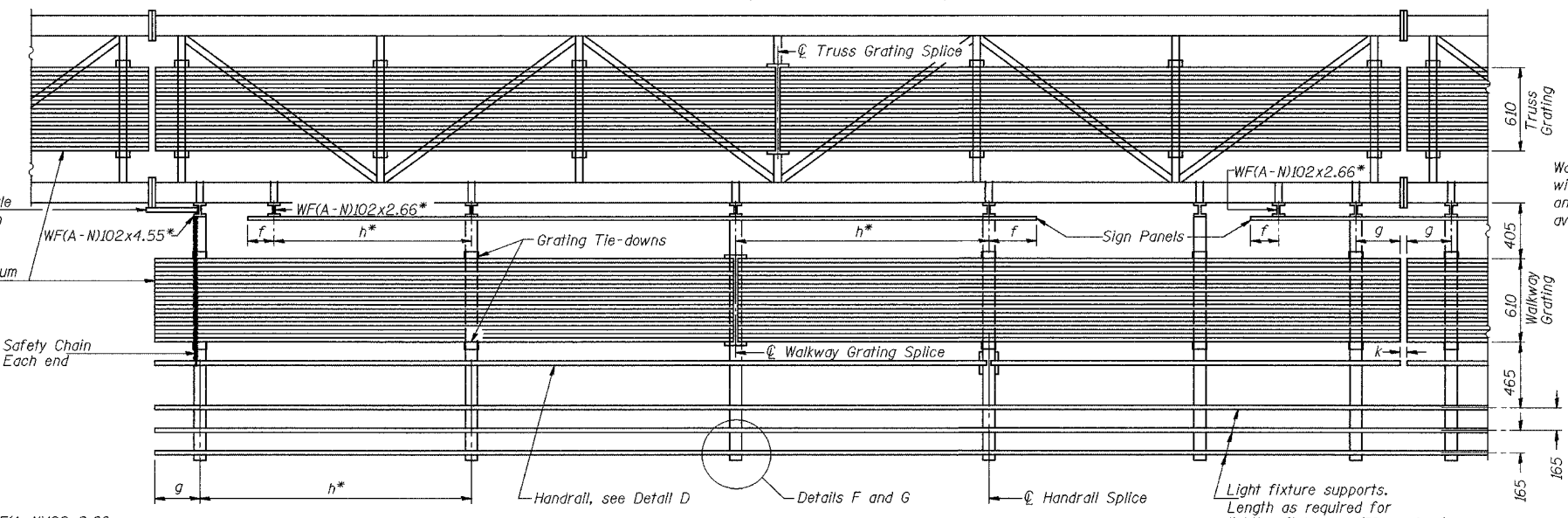
Notes: \*Space walkway brackets WF(A-N)102x4.55 and sign brackets WF(A-N)102x2.66 for efficiency and within limits shown:

- f = 300 mm maximum, 100 mm minimum (End of sign to  $\phi$  of nearest bracket)
- g = 300 mm maximum, 100 mm minimum (End of walkway grating to  $\phi$  of nearest support bracket)
- h = 1.85 m maximum ( $\phi$  to  $\phi$  sign and/or walkway support brackets, WF(A-N)102x2.66 or WF(A-N)102x4.55)
- k = 50 mm maximum gap between adjacent walkway grating sections and handrail ends

\*\*If walkway bracket at safety chain location is behind sign, add angle to bracket, see Alternate Safety Chain Attachment on Base Sheet OS-A-11(M).

For Details T and W, Section B-B and Grating Splice Details, see Base Sheet OS-A-10(M).  
For Details D, F, G and P and Handrail Splice Details, see Base Sheet OS-A-11(M).

NUMBER	REVISION	DATE



**SECTION A-A**

Handrail and walkway shall span a minimum of three brackets between splices and/or gap joints. Place all sign and walkway brackets as close to panel points as practical. Grating, handrail and light support splices placed as needed.

Truss grating to facilitate inspection shall run full length (center to center of support frames)  $\pm 305$  mm on overhead structures. Cost of truss grating is included in "Overhead Sign Structure".

Structure Number	Station	a (m)	b (m)	c (m)	d (m)	e (m)	Walkway Grating and Handrail Lengths
ISO161080L162.9	6+951.478	12.75	14.13	3.55	-	-	14.13
ISO161080R163.1	7+239.540	7.78	15.50	3.55	-	-	15.50
ISO161080L163.1	7+312.695	7.08	19.80	6.57	-	-	19.80

ILLINOIS DEPARTMENT OF TRANSPORTATION  
I-80/94/US 6  
KINGERY-BORMAN EXPRESSWAY  
BURNHAM ROAD TO US 41  
**OVERHEAD SIGN STRUCTURES  
ALUMINUM WALKWAY DETAILS**

SCALE NONE  
DATE 07/05

DRAWN BY ACE/CAD  
CHECKED BY TAE

**AMERICAN**  
CONSULTING ENGINEERS