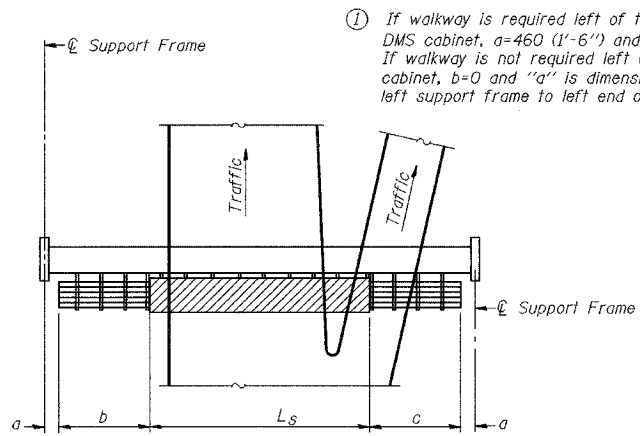


STATE OF ILLINOIS
DEPARTMENT OF TRANSPORTATION

ALL DIMENSIONS IN MILLIMETERS EXCEPT
PAY ITEMS AND UNLESS NOTED OTHERWISE

F.A.I. RTE.	SECTION	COUNTY	TOTAL SHEETS	SHEET NO.
80/94	2626.2-R-2	COOK/LAKE	1207	384
STA.	TO STA.			
FED. ROAD DIST. NO.	ILLINOIS FED. AID PROJECT			
CONTRACT NO. 62114	INDOT DES. NO. 0100987			

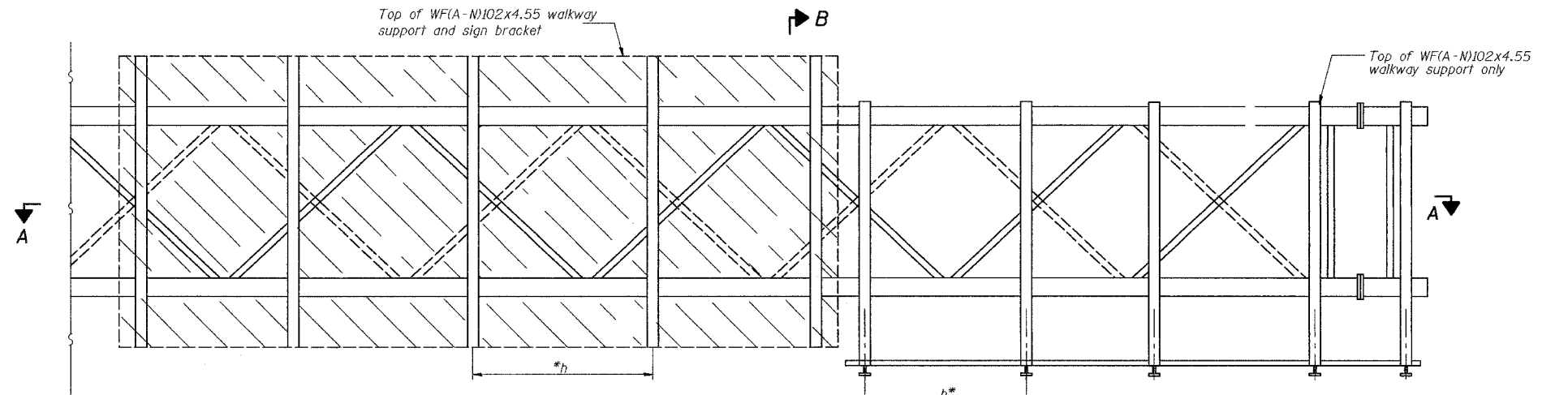


PLAN
WALKWAY AND HANDRAIL SKETCH
(Road plan beneath truss varies)

BRACKET TABLE

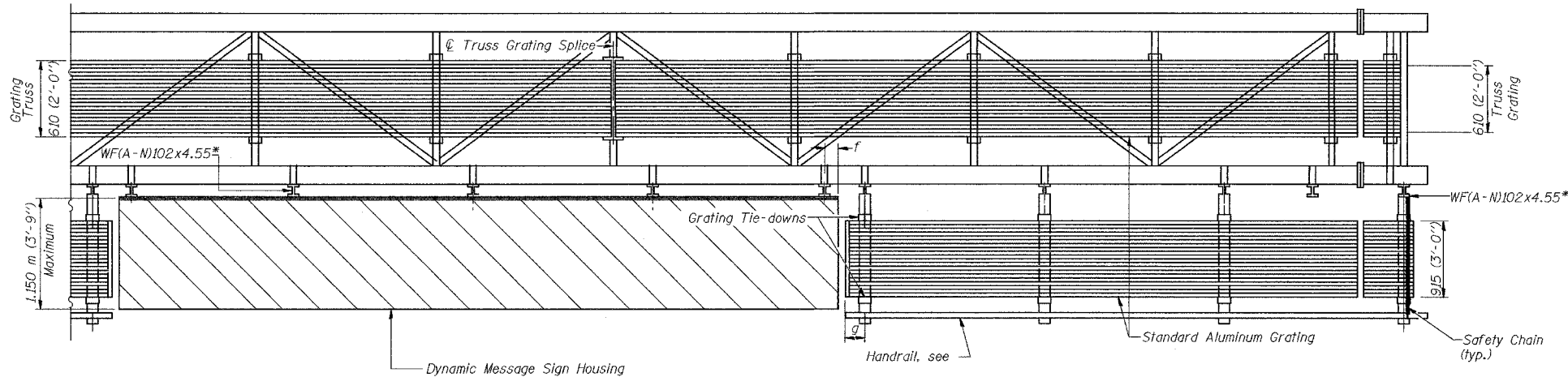
WFA-N)4x3.06 ASTM B308, Alloy 6061-T6		
Sign Width		Number Brackets Required
Greater Than	Less Than or Equal To	
2.4m (8'-0")	2.4m (8'-0")	2
4.3m (14'-0")	4.3m (14'-0")	3
6.0m (20'-0")	6.0m (20'-0")	4
7.9m (26'-0")	7.9m (26'-0")	5
9.8m (32'-0")	9.8m (32'-0")	6

Walkway and Truss Grating width dimensions are nominal and may vary ±13 (1/2") based on available standard widths.



TYPICAL FRONT ELEVATION
With handrail omitted for clarity.
For Section B-B, see Base Sheet 05-A-10.

Bracket and grating dimensions are nominal and will vary based on actual DMS cabinet dimensions plus manufacturer's mounting devices.



SECTION A-A

Handrail and walkway shall span a minimum of three brackets between splices and/or gap joints. Place all sign and walkway brackets as close to panel points as practical. Grating and handrail splices placed as needed.

Truss grating to facilitate inspection shall run full length (center to center of support frames) ±305 (12") on overhead trusses. Cost of truss grating is included in "Overhead Sign Structure".

Notes: *Space walkway brackets WFA-N)102x4.55 and sign brackets WFA-N)102x4.55 for efficiency and within limits shown:

- f = 305 (12") maximum, 103 (4") minimum (End of sign to center of nearest bracket)
- g = 305 (12") maximum, 103 (4") minimum (End of walkway grating to center of nearest support bracket)
- h = 1.83 m (6'-0") maximum center to center sign and/or walkway support brackets, WFA-N)102x4.55

For Details T and W, Section B-B and Grating Splice Details, see Base Sheet 05-A-10-DMS.
For Handrail Splice Details, see Base Sheet 05-A-11.

Structure Number	Station	a	b	c	L _s	Walkway Grating and Handrail Lengths
ISO161080L163.5	7+948.045	3.550 m	5.555 m	6.225 m	7.950 m	11.780 m

DESIGNED	19
CHECKED	EXAMINED
DRAWN	PASSED
CHECKED	

ENGINEER OF STRUCTURAL SERVICES
ENGINEER OF BRIDGES AND STRUCTURES

NUMBER	REVISION	DATE

REVISIONS	
NAME	DATE

ILLINOIS DEPARTMENT OF TRANSPORTATION
I-80/94/US 6
KINGERY-BORMAN EXPRESSWAY
BURNHAM ROAD TO US 41
**OVERHEAD SIGN STRUCTURES
ALUMINUM WALKWAY DETAILS**

SCALE NONE
DATE 07/05

DRAWN BY
CHECKED BY

AMERICAN
CONSULTING ENGINEERS