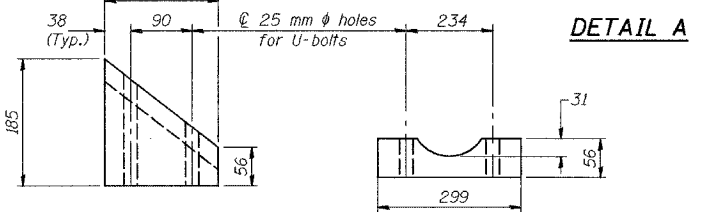
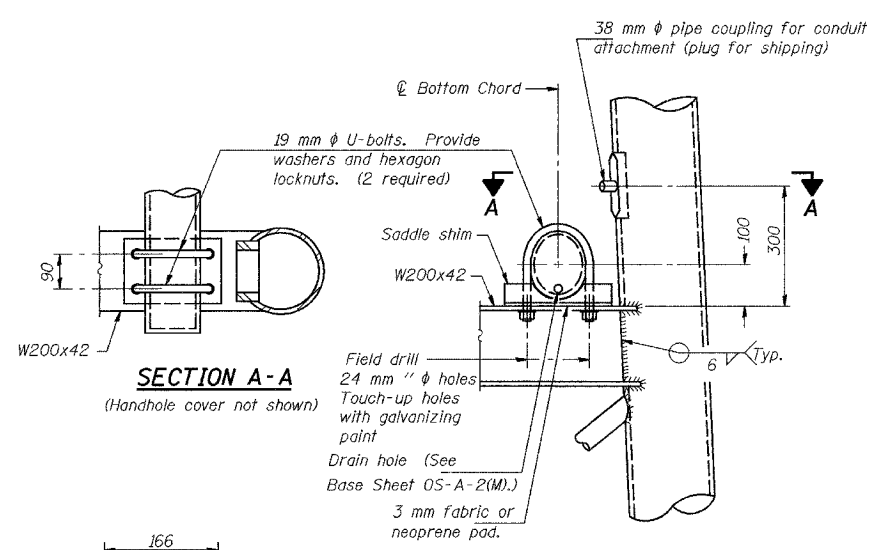


ROUTE NO.	SECTION	COUNTY	SHEET	SHEET
P.A.I.	08-794	LAKE COUNTY, INDIANA	1207	400
BALANCE		PER. AID PROJECT		

CONTRACT NO. 62114 INDOT DES. NO. 0100987



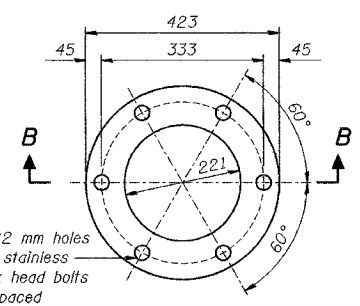
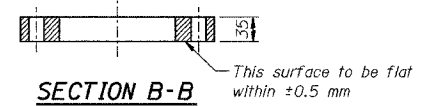
SADDLE SHIM DETAIL

ASTM B26M Alloy 356-F

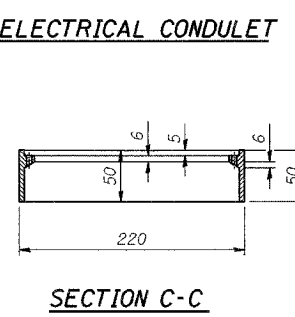
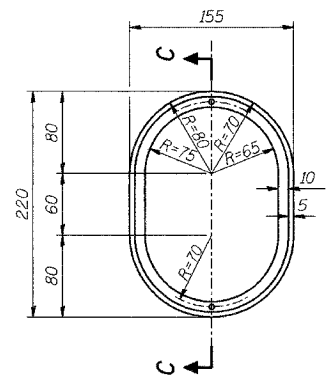
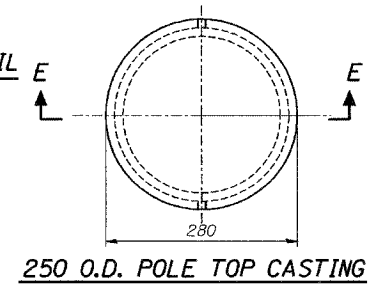
or

ASTM B209M Alloy 6061-T6S1

(4 required per sign truss)



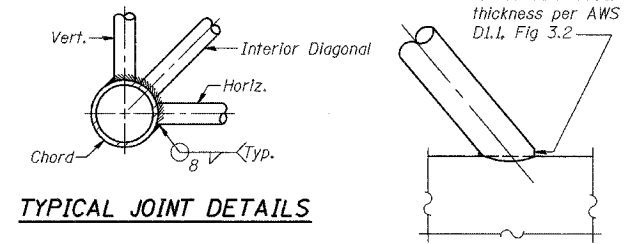
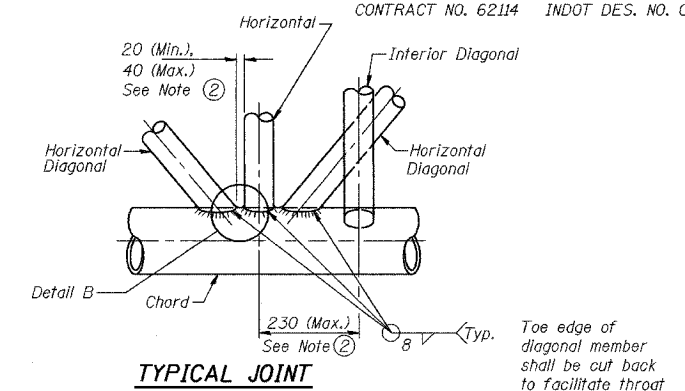
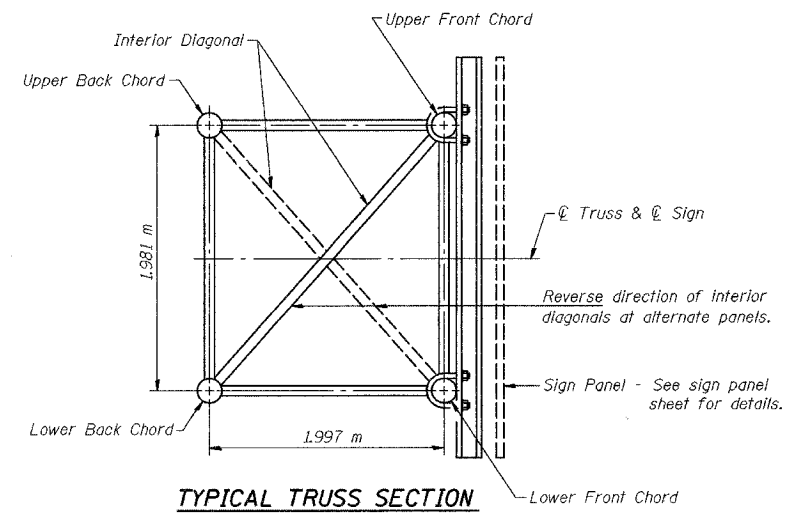
DESIGNED	BPS
CHECKED	KFA
DRAWN	MJB
CHECKED	GSP



Note:

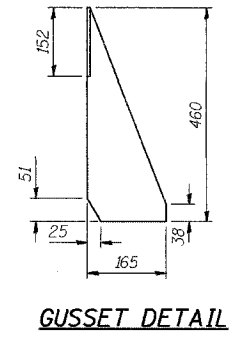
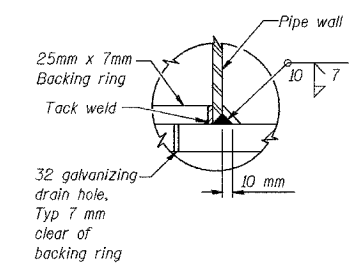
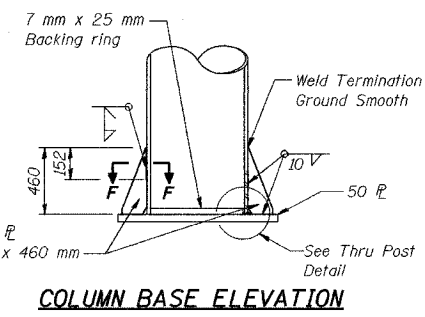
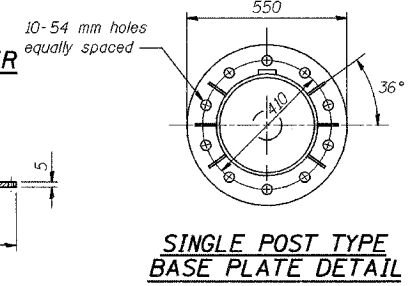
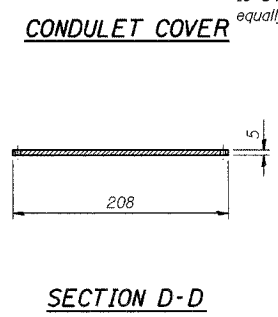
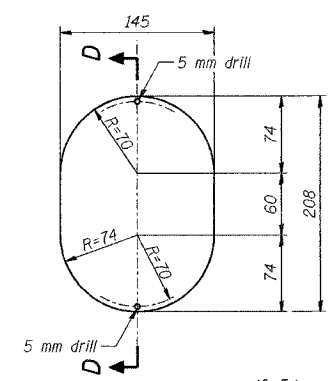
1. Drill and tap (thru) two-3.3 mm holes with M4 threads.
2. Two-Stainless Steel M4x12 long round-head phillips machine screws required

Note: Drill and tap holes 180° apart for M12 stainless steel set screws



NOTES

- ① Contractor may alternatively use standard aluminum drive-fit cap to close end. 13 mm ϕ drain hole in end plate/drive-fit cap. (Typ. at ends of all chords)
- ② All diagonals shall be detailed for minimum offset from the panel point based on the following: Offset shall be such as to provide a 20 mm minimum to 40 mm maximum clearance between any diagonal and any horizontal or vertical member, and to provide clearance for U-bolt connections of signs or walkway brackets.
- ③ Anchor bolts are 51mm ϕ and 1.83m long.



ILLINOIS DEPARTMENT OF TRANSPORTATION
I-80/94/US 6
KINCERY-BORMAN EXPRESSWAY
BURNHAM ROAD TO US 41

INDIANA WELCOME SIGN DETAILS
SHEET 2 OF 5

SCALE NTS
DATE 07/05

DRAWN BY ACE/CAD
CHECKED BY

AMERICAN
CONSULTING ENGINEERS